

**DATASHEET**

**PSKH1 Rabbit Polyclonal Antibody**

CAT. NO. APA10325

**KEY FEATURES**

|               |   |               |                    |
|---------------|---|---------------|--------------------|
| Target        | PSKH1   | Source / Host | Rabbit             |
| Reactivity    | Human, Mouse, Bovine, Chicken, Pig  | Clonality     | Polyclonal         |
| Applications  | WB, IHC   | Conjugation   | Unconjugated       |
| Form / Buffer | Liquid in 0.42% Potassium phosphate, 0.87% Sodium chloride, pH 7.3, 30% glycerol, and 0.01% sodium azide. |               | Storage<br>at-20°C |

**BACKGROUND**

Serine/threonine protein kinase that may be involved in the regulation of pre-mRNA processing. It may phosphorylate components of nuclear splice factor compartments (SFC), such as non-snRNP splicing factors containing a serine/arginine-rich domain (SR proteins). Reversible phosphorylation of SR proteins may cause their release into the nucleoplasm and change their local concentration, thereby influencing alternative splicing.

**APPLICATION**

To ensure optimal assay performance, AREX recommends conducting reagent titration tailored to each testing system for optimal detection results.

|     |                |
|-----|----------------|
| WB  | 1:500 - 1:1000 |
| IHC | 1:100 - 1:200  |

\*Results are sample-specific. Please refer to your local assay conditions and test parameters for reference.

**PRODUCT OVERVIEW**

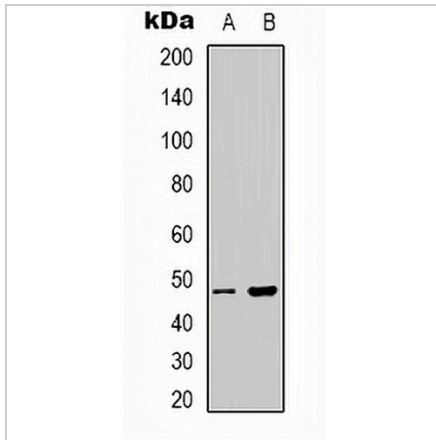
|                   |  |
|-------------------|--|
| Description       | Rabbit polyclonal antibody to PSKH1  |
| Specificity       | Recognizes endogenous levels of PSKH1 protein.   |
| Antibody Type     | Primary antibody   |
| Immunogen         | KLH-conjugated synthetic peptide encompassing a sequence within the center region of human PSKH1. The exact sequence is proprietary. |
| Purification      | The antibody was purified by immunogen affinity chromatography.  |
| Molecular Weight  | Predicted: 48 kD; Observed: 48 kD  |
| Form/Buffer       | Liquid in 0.42% Potassium phosphate, 0.87% Sodium chloride, pH 7.3, 30% glycerol, and 0.01% sodium azide.                            |
| Alternative Names | Serine/threonine-protein kinase H1; Protein serine kinase H1; PSK-H1   |
| Gene Symbol       | PSKH1  |
| Entrez Gene       | 5681(Human); 244631(Mouse)   |
| SwissProt         | P11801(Human); Q91YA2(Mouse)   |

\*AREX continuously optimizes our products. Webpage content may not reflect the latest updates. For inquiries, please contact [info@arexbio.com](mailto:info@arexbio.com) or your local distributor.

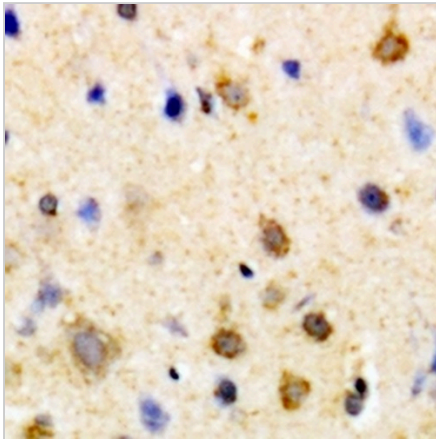
\*Clone Number, Reactivity, Source/Host and Clonality can be found in the product name and Key Features section above.

**DATASHEET****PSKH1 Rabbit Polyclonal Antibody**

CAT. NO. APA10325

**DATA**

Western blot analysis of PSKH1 expression in HeLa (A), HepG2 (B) whole cell lysates. (Predicted band size: 48 kD; Observed band size: 48 kD)



Immunohistochemical analysis of PSKH1 staining in human brain formalin fixed paraffin embedded tissue section. The section was pre-treated using heat mediated antigen retrieval with sodium citrate buffer (pH 6.0). The section was then incubated with the antibody at room temperature and detected using an HRP conjugated compact polymer system. DAB was used as the chromogen. The section was then counterstained with haematoxylin and mounted with DPX.

**STORAGE**

Store at 4°C short term. For long term storage, store at -20°C, avoiding freeze/thaw cycles.

**NOTE**

For Research Use Only. Not for diagnostic, therapeutics, prophylactic or in vivo use.