

**DATASHEET**

**Glycerol Kinase 1 Rabbit Polyclonal Antibody**

CAT. NO. APA10337

**KEY FEATURES**

Target	Glycerol Kinase 1	Source / Host	Rabbit
Reactivity	Human, Mouse, Rat, Bovine	Clonality	Polyclonal
Applications	WB, IHC	Conjugation	Unconjugated
Form / Buffer	Liquid in 0.42% Potassium phosphate, 0.87% Sodium chloride, pH 7.3, 30% glycerol, and 0.01% sodium azide.	Storage	at-20°C

**BACKGROUND**

Kinase that plays a key role in glycerol metabolism, catalyzing its phosphorylation to produce sn-glycerol 3-phosphate. Sn-glycerol 3-phosphate is a crucial intermediate in various metabolic pathways, such as the synthesis of glycerolipids and triglycerides, glycogenesis, glycolysis and gluconeogenesis.

**APPLICATION**

To ensure optimal assay performance, AREX recommends conducting reagent titration tailored to each testing system for optimal detection results.

WB	1:500 - 1:1000
IHC	1:100 - 1:200

\*Results are sample-specific. Please refer to your local assay conditions and test parameters for reference.

**PRODUCT OVERVIEW**

Description	Rabbit polyclonal antibody to Glycerol Kinase 1
Specificity	Recognizes endogenous levels of Glycerol Kinase 1 protein.
Antibody Type	Primary antibody
Immunogen	KLH-conjugated synthetic peptide encompassing a sequence within the N-term region of human Glycerol Kinase 1. The exact sequence is proprietary.
Purification	The antibody was purified by immunogen affinity chromatography.
Molecular Weight	Predicted: 61; Observed: 61 kD
Form/Buffer	Liquid in 0.42% Potassium phosphate, 0.87% Sodium chloride, pH 7.3, 30% glycerol, and 0.01% sodium azide.
Alternative Names	GK; Glycerol kinase; GK; Glycerokinase; ATP:glycerol 3-phosphotransferase; GK3P; GKP3; GKTB; Putative glycerol kinase 3; GK 3; Glycerokinase 3; ATP:glycerol 3-phosphotransferase 3; Glycerol kinase, testis specific 1
Gene Symbol	GK
Entrez Gene	2713(Human)
SwissProt	P32189; Q14409(Human)

\*AREX continuously optimizes our products. Webpage content may not reflect the latest updates. For inquiries, please contact [info@arexbio.com](mailto:info@arexbio.com) or your local distributor.

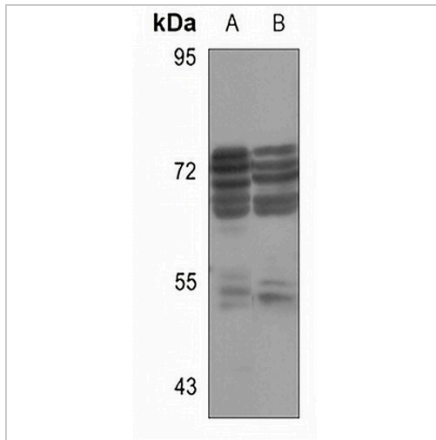
\*Clone Number, Reactivity, Source/Host and Clonality can be found in the product name and Key Features section above.

**DATASHEET**

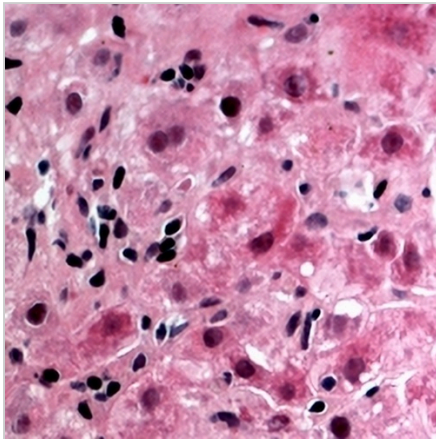
**Glycerol Kinase 1 Rabbit Polyclonal Antibody**

CAT. NO. APA10337

**DATA**



Western blot analysis of Glycerol Kinase 1 expression in mouse kidney (A), rat kidney (B) whole cell lysates. (Predicted band size: 61; 60 kD; Observed band size: 61 kD)



Immunohistochemical analysis of Glycerol Kinase 1 staining in human liver cancer formalin fixed paraffin embedded tissue section. The section was pre-treated using heat mediated antigen retrieval with sodium citrate buffer (pH 6.0). The section was then incubated with the antibody at room temperature and detected using an HRP conjugated compact polymer system. AEC was used as the chromogen. The section was then counterstained with haematoxylin and mounted with DPX.

**STORAGE**

Store at 4°C short term. For long term storage, store at -20°C, avoiding freeze/thaw cycles.

**NOTE**

For Research Use Only. Not for diagnostic, therapeutics, prophylactic or in vivo use.