

**DATASHEET**

**CADM3 Rabbit Polyclonal Antibody**

CAT. NO. APA10371

**KEY FEATURES**

Target	CADM3	Source / Host	Rabbit
Reactivity	Human, Mouse, Bovine	Clonality	Polyclonal
Applications	WB, IHC	Conjugation	Unconjugated
Form / Buffer	Liquid in 0.42% Potassium phosphate, 0.87% Sodium chloride, pH 7.3, 30% glycerol, and 0.01% sodium azide.		Storage at-20°C

**BACKGROUND**

Involved in cell-cell adhesion. Has both calcium-independent homophilic cell-cell adhesion activity and calcium-independent heterophilic cell-cell adhesion activity with IGSF4, NECTIN1 and NECTIN3. Interaction with EPB41L1 may regulate structure or function of cell-cell junctions .

**APPLICATION**

To ensure optimal assay performance, AREX recommends conducting reagent titration tailored to each testing system for optimal detection results.

WB	1:500 - 1:1000
IHC	1:50 - 1:100

\*Results are sample-specific. Please refer to your local assay conditions and test parameters for reference.

**PRODUCT OVERVIEW**

Description	Rabbit polyclonal antibody to CADM3
Specificity	Recognizes endogenous levels of CADM3 protein.
Antibody Type	Primary antibody
Immunogen	KLH-conjugated synthetic peptide encompassing a sequence within the center region of human CADM3. The exact sequence is proprietary.
Purification	The antibody was purified by immunogen affinity chromatography.
Molecular Weight	Predicted: 43 kD; Observed: 43 kD
Form/Buffer	Liquid in 0.42% Potassium phosphate, 0.87% Sodium chloride, pH 7.3, 30% glycerol, and 0.01% sodium azide.
Alternative Names	IGSF4B; NECL1; SYNCAM3; TSLL1; Cell adhesion molecule 3; Brain immunoglobulin receptor; Immunoglobulin superfamily member 4B; IgSF4B; Nectin-like protein 1; NECL-1; Synaptic cell adhesion molecule 3; SynCAM3; TSLC1-like protein 1; TSLL1
Gene Symbol	CADM3
Entrez Gene	57863(Human); 94332(Mouse)
SwissProt	Q8N126(Human); Q99N28(Mouse)

\*AREX continuously optimizes our products. Webpage content may not reflect the latest updates. For inquiries, please contact [info@arexbio.com](mailto:info@arexbio.com) or your local distributor.

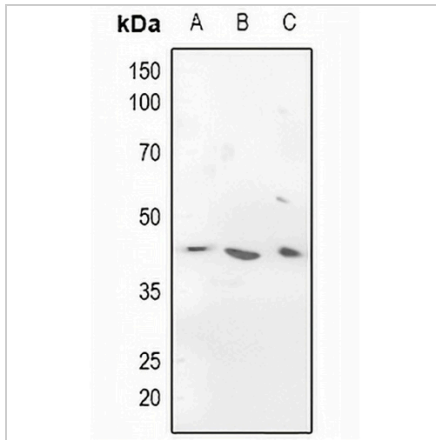
\*Clone Number, Reactivity, Source/Host and Clonality can be found in the product name and Key Features section above.

**DATASHEET**

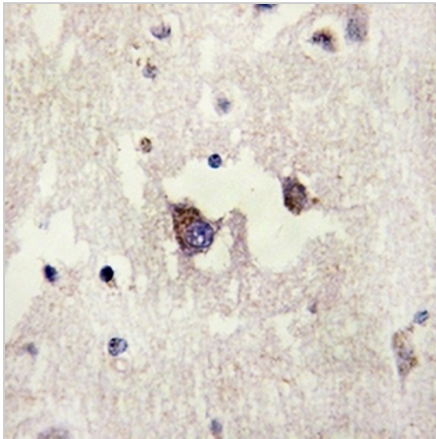
**CADM3 Rabbit Polyclonal Antibody**

CAT. NO. APA10371

**DATA**



Western blot analysis of CADM3 expression in HEK293T (A), HeLa (B), mouse brain (C) whole cell lysates. (Predicted band size: 43 kD; Observed band size: 43 kD)



Immunohistochemical analysis of CADM3 staining in human brain formalin fixed paraffin embedded tissue section. The section was pre-treated using heat mediated antigen retrieval with sodium citrate buffer (pH 6.0). The section was then incubated with the antibody at room temperature and detected using an HRP conjugated compact polymer system. DAB was used as the chromogen. The section was then counterstained with haematoxylin and mounted with DPX.

**STORAGE**

Store at 4°C short term. For long term storage, store at -20°C, avoiding freeze/thaw cycles.

**NOTE**

For Research Use Only. Not for diagnostic, therapeutics, prophylactic or in vivo use.