

**DATASHEET**

**PHLDA3 Rabbit Polyclonal Antibody**

CAT. NO. APA10378

**KEY FEATURES**

Target	PHLDA3	Source / Host	Rabbit
Reactivity	Human, Mouse, Rat	Clonality	Polyclonal
Applications	WB, IHC	Conjugation	Unconjugated
Form / Buffer	Liquid in 0.42% Potassium phosphate, 0.87% Sodium chloride, pH 7.3, 30% glycerol, and 0.01% sodium azide.		Storage at-20°C

**BACKGROUND**

p53/TP53-regulated repressor of Akt/AKT1 signaling. Represses AKT1 by preventing AKT1-binding to membrane lipids, thereby inhibiting AKT1 translocation to the cellular membrane and activation. Contributes to p53/TP53-dependent apoptosis by repressing AKT1 activity. Its direct transcription regulation by p53/TP53 may explain how p53/TP53 can negatively regulate AKT1. May act as a tumor suppressor.

**APPLICATION**

To ensure optimal assay performance, AREX recommends conducting reagent titration tailored to each testing system for optimal detection results.

WB	1:500 - 1:1000
IHC	1:100 - 1:200

\*Results are sample-specific. Please refer to your local assay conditions and test parameters for reference.

**PRODUCT OVERVIEW**

Description	Rabbit polyclonal antibody to PHLDA3
Specificity	Recognizes endogenous levels of PHLDA3 protein.
Antibody Type	Primary antibody
Immunogen	KLH-conjugated synthetic peptide encompassing a sequence within the center region of human PHLDA3. The exact sequence is proprietary.
Purification	The antibody was purified by immunogen affinity chromatography.
Molecular Weight	Predicted: 13 kD; Observed: 16 kD
Form/Buffer	Liquid in 0.42% Potassium phosphate, 0.87% Sodium chloride, pH 7.3, 30% glycerol, and 0.01% sodium azide.
Alternative Names	TIH1; Pleckstrin homology-like domain family A member 3; TDAG51/Ipl homolog 1
Gene Symbol	PHLDA3
Entrez Gene	23612(Human); 27280(Mouse); 363989(Rat)
SwissProt	Q9Y5J5(Human); Q9WV95(Mouse); Q5PQT7(Rat)

\*AREX continuously optimizes our products. Webpage content may not reflect the latest updates. For inquiries, please contact [info@arexbio.com](mailto:info@arexbio.com) or your local distributor.

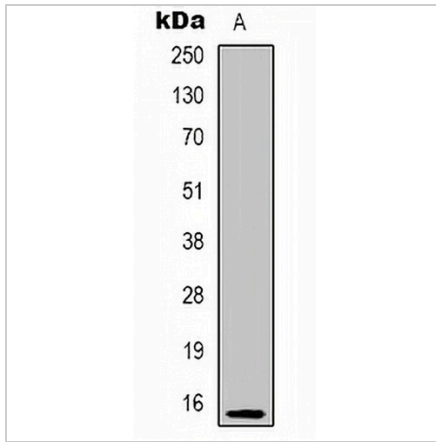
\*Clone Number, Reactivity, Source/Host and Clonality can be found in the product name and Key Features section above.

**DATASHEET**

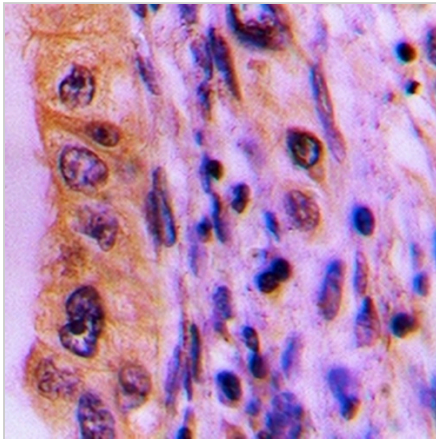
**PHLDA3 Rabbit Polyclonal Antibody**

CAT. NO. APA10378

**DATA**



Western blot analysis of PHLDA3 expression in HEK293T (A) whole cell lysates. (Predicted band size: 13 kD; Observed band size: 16 kD)



Immunohistochemical analysis of PHLDA3 staining in human lung cancer formalin fixed paraffin embedded tissue section. The section was pre-treated using heat mediated antigen retrieval with sodium citrate buffer (pH 6.0). The section was then incubated with the antibody at room temperature and detected using an HRP conjugated compact polymer system. DAB was used as the chromogen. The section was then counterstained with haematoxylin and mounted with DPX.

**STORAGE**

Store at 4°C short term. For long term storage, store at -20°C, avoiding freeze/thaw cycles.

**NOTE**

For Research Use Only. Not for diagnostic, therapeutics, prophylactic or in vivo use.