

DATASHEET

Arylsulfatase G Rabbit Polyclonal Antibody

CAT. NO. APA10386

KEY FEATURES

Target	Arylsulfatase G	Source / Host	Rabbit
Reactivity	Human, Mouse, Rat	Clonality	Polyclonal
Applications	WB, IHC	Conjugation	Unconjugated
Form / Buffer	Liquid in 0.42% Potassium phosphate, 0.87% Sodium chloride, pH 7.3, 30% glycerol, and 0.01% sodium azide.		Storage at-20°C

BACKGROUND

Displays arylsulfatase activity at acidic pH towards artificial substrates, such as p-nitrocatechol sulfate and also, but with a lower activity towards p-nitrophenyl sulfate and 4-methylumbelliferyl sulfate . Catalyzes the hydrolysis of the 3-sulfate groups of the N-sulfo-D-glucosamine 3-O-sulfate units of heparin .

APPLICATION

To ensure optimal assay performance, AREX recommends conducting reagent titration tailored to each testing system for optimal detection results.

WB	1:500 - 1:1000
IHC	1:100 - 1:200

*Results are sample-specific. Please refer to your local assay conditions and test parameters for reference.

PRODUCT OVERVIEW

Description	Rabbit polyclonal antibody to Arylsulfatase G
Specificity	Recognizes endogenous levels of Arylsulfatase G protein.
Antibody Type	Primary antibody
Immunogen	KLH-conjugated synthetic peptide encompassing a sequence within the center region of human Arylsulfatase G. The exact sequence is proprietary.
Purification	The antibody was purified by immunogen affinity chromatography.
Molecular Weight	Predicted: 57 kD; Observed: 70 kD
Form/Buffer	Liquid in 0.42% Potassium phosphate, 0.87% Sodium chloride, pH 7.3, 30% glycerol, and 0.01% sodium azide.
Alternative Names	KIAA1001; Arylsulfatase G; ASG
Gene Symbol	ARSG
Entrez Gene	22901(Human); 74008(Mouse); 303631(Rat)
SwissProt	Q96EG1(Human); Q3TYD4(Mouse); Q32KJ9(Rat)

*AREX continuously optimizes our products. Webpage content may not reflect the latest updates. For inquiries, please contact info@arexbio.com or your local distributor.

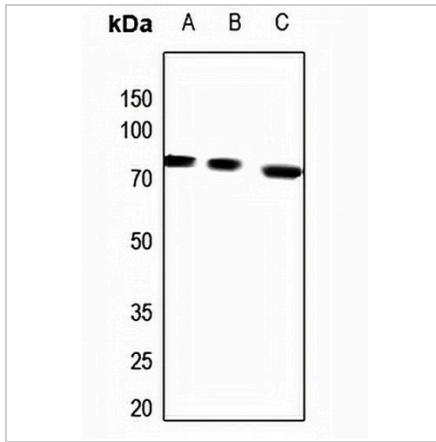
*Clone Number, Reactivity, Source/Host and Clonality can be found in the product name and Key Features section above.

DATASHEET

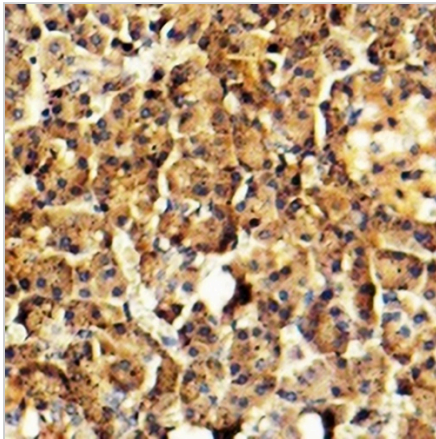
Arylsulfatase G Rabbit Polyclonal Antibody

CAT. NO. APA10386

DATA



Western blot analysis of Arylsulfatase G expression in HEK293T (A), HeLa (B), rat liver (C) whole cell lysates. (Predicted band size: 57 kD; Observed band size: 70 kD)



Immunohistochemical analysis of Arylsulfatase G staining in human pancreas formalin fixed paraffin embedded tissue section. The section was pre-treated using heat mediated antigen retrieval with sodium citrate buffer (pH 6.0). The section was then incubated with the antibody at room temperature and detected using an HRP conjugated compact polymer system. DAB was used as the chromogen. The section was then counterstained with haematoxylin and mounted with DPX.

STORAGE

Store at 4°C short term. For long term storage, store at -20°C, avoiding freeze/thaw cycles.

NOTE

For Research Use Only. Not for diagnostic, therapeutics, prophylactic or in vivo use.