

**DATASHEET**

**B4GALT1 Rabbit Polyclonal Antibody**

CAT. NO. APA10389

**KEY FEATURES**

Target	B4GALT1	Source / Host	Rabbit
Reactivity	Human, Mouse, Rat, Bovine, Monkey	Clonality	Polyclonal
Applications	WB, IHC	Conjugation	Unconjugated
Form / Buffer	Liquid in 0.42% Potassium phosphate, 0.87% Sodium chloride, pH 7.3, 30% glycerol, and 0.01% sodium azide.		Storage at-20°C

**BACKGROUND**

Galactosyltransferase acting in the Golgi stacks. Catalyzes the transfer of galactose (Gal) from UDP-alpha-D-galactose in beta(1->4) linkage to the non-reducing terminal N-acetylglucosamine (GlcNAc) moieties of glycolipids and complex-type N-linked glycans from UDP-alpha-D-galactose in beta(1->4) linkage to the non-reducing terminal N-acetylglucosamine (GlcNAc) moieties of glycolipids and complex-type N-linked glycans. Adds one Gal residue to both GlcNAc beta(1->2)-linked to the alpha(1->3) and alpha(1->6) mannose antennae of complex-type N-glycans, enabling the formation of mono- and di-galactosylated glycoforms.

**APPLICATION**

To ensure optimal assay performance, AREX recommends conducting reagent titration tailored to each testing system for optimal detection results.

WB	1:500 - 1:1000
IHC	1:100 - 1:200

\*Results are sample-specific. Please refer to your local assay conditions and test parameters for reference.

**PRODUCT OVERVIEW**

Description	Rabbit polyclonal antibody to B4GALT1
Specificity	Recognizes endogenous levels of B4GALT1 protein.
Antibody Type	Primary antibody
Immunogen	KLH-conjugated synthetic peptide encompassing a sequence within the C-term region of human B4GALT1. The exact sequence is proprietary.
Purification	The antibody was purified by immunogen affinity chromatography.
Molecular Weight	Predicted: 43 kD; Observed: 43 kD
Form/Buffer	Liquid in 0.42% Potassium phosphate, 0.87% Sodium chloride, pH 7.3, 30% glycerol, and 0.01% sodium azide.
Alternative Names	GGTB2; Beta-1,4-galactosyltransferase 1; Beta-1,4-GalTase 1; Beta4Gal-T1; b4Gal-T1; UDP-Gal:beta-GlcNAc beta-1,4-galactosyltransferase 1; UDP-galactose:beta-N-acetylglucosamine beta-1,4-galactosyltransferase 1
Gene Symbol	B4GALT1
Entrez Gene	2683(Human); 14595(Mouse)
SwissProt	P15291(Human); P15535(Mouse); P80225(Rat)

\*AREX continuously optimizes our products. Webpage content may not reflect the latest updates. For inquiries, please contact [info@arexbio.com](mailto:info@arexbio.com) or your local distributor.

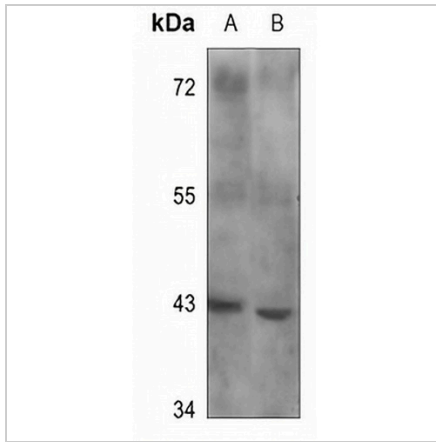
\*Clone Number, Reactivity, Source/Host and Clonality can be found in the product name and Key Features section above.

**DATASHEET**

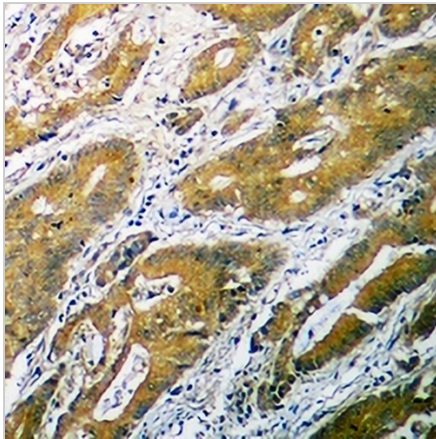
**B4GALT1 Rabbit Polyclonal Antibody**

CAT. NO. APA10389

**DATA**



Western blot analysis of B4GALT1 expression in mouse liver (A), rat liver (B) whole cell lysates. (Predicted band size: 43 kD; Observed band size: 43 kD)



Immunohistochemical analysis of B4GALT1 staining in human colon cancer formalin fixed paraffin embedded tissue section. The section was pre-treated using heat mediated antigen retrieval with sodium citrate buffer (pH 6.0). The section was then incubated with the antibody at room temperature and detected using an HRP conjugated compact polymer system. DAB was used as the chromogen. The section was then counterstained with haematoxylin and mounted with DPX.

**STORAGE**

Store at 4°C short term. For long term storage, store at -20°C, avoiding freeze/thaw cycles.

**NOTE**

For Research Use Only. Not for diagnostic, therapeutics, prophylactic or in vivo use.