

DATASHEET

FAM203A Rabbit Polyclonal Antibody

CAT. NO. APA10390

KEY FEATURES

Target	FAM203A	Source / Host	Rabbit
Reactivity	Human, Monkey	Clonality	Polyclonal
Applications	WB, IHC	Conjugation	Unconjugated
Form / Buffer	Liquid in 0.42% Potassium phosphate, 0.87% Sodium chloride, pH 7.3, 30% glycerol, and 0.01% sodium azide.		Storage at -20°C

BACKGROUND

Co-chaperone involved in the folding of nascent eukaryotic elongation factor eEF2, an essential component of the translation machinery. Recognizes a non-native conformation in the central domain of eEF2 and recruits the chaperonin-containing T-complex (TRiC) to the C-terminal region of the nascent polypeptide, preventing unproductive interactions and promoting efficient folding of the N-terminal GTPase domain. May also assist in eEF2 maturation by recruiting the molecular chaperone Hsp90.

APPLICATION

To ensure optimal assay performance, AREX recommends conducting reagent titration tailored to each testing system for optimal detection results.

WB	1:500 - 1:1000
IHC	1:100 - 1:200

*Results are sample-specific. Please refer to your local assay conditions and test parameters for reference.

PRODUCT OVERVIEW

Description	Rabbit polyclonal antibody to FAM203A
Specificity	Recognizes endogenous levels of FAM203A protein.
Antibody Type	Primary antibody
Immunogen	KLH-conjugated synthetic peptide encompassing a sequence within the center region of human FAM203A. The exact sequence is proprietary.
Purification	The antibody was purified by immunogen affinity chromatography.
Molecular Weight	Predicted: 42 kD; Observed: 40 kD
Form/Buffer	Liquid in 0.42% Potassium phosphate, 0.87% Sodium chloride, pH 7.3, 30% glycerol, and 0.01% sodium azide.
Alternative Names	BRP16; C8orf30A; Protein FAM203A; Brain protein 16
Gene Symbol	FAM203A
Entrez Gene	51236(Human)
SwissProt	Q9BTY7(Human)

*AREX continuously optimizes our products. Webpage content may not reflect the latest updates. For inquiries, please contact info@arexbio.com or your local distributor.

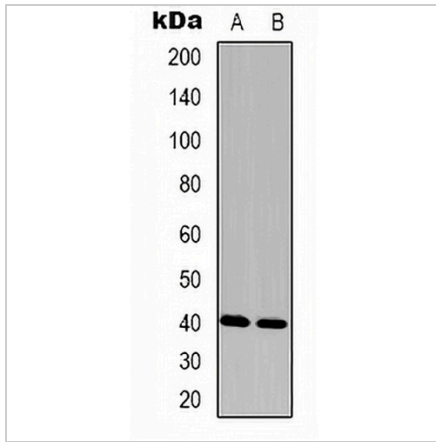
*Clone Number, Reactivity, Source/Host and Clonality can be found in the product name and Key Features section above.

DATASHEET

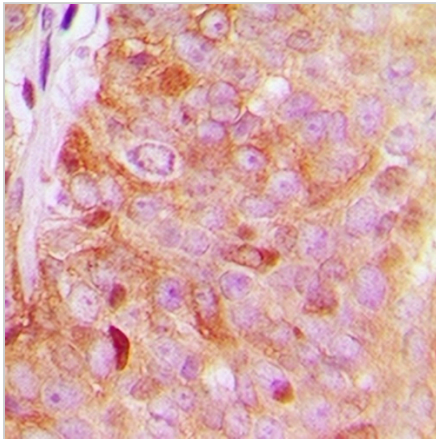
FAM203A Rabbit Polyclonal Antibody

CAT. NO. APA10390

DATA



Western blot analysis of FAM203A expression in HeLa (A), Colo320 (B) whole cell lysates. (Predicted band size: 42 kD; Observed band size: 40 kD)



Immunohistochemical analysis of FAM203A staining in human breast cancer formalin fixed paraffin embedded tissue section. The section was pre-treated using heat mediated antigen retrieval with sodium citrate buffer (pH 6.0). The section was then incubated with the antibody at room temperature and detected using an HRP conjugated compact polymer system. DAB was used as the chromogen. The section was then counterstained with haematoxylin and mounted with DPX.

STORAGE

Store at 4°C short term. For long term storage, store at -20°C, avoiding freeze/thaw cycles.

NOTE

For Research Use Only. Not for diagnostic, therapeutics, prophylactic or in vivo use.