

DATASHEET

C1QL2 Rabbit Polyclonal Antibody

CAT. NO. APA10398

KEY FEATURES

Target	C1QL2	Source / Host	Rabbit
Reactivity	Human, Mouse, Rat, Pig	Clonality	Polyclonal
Applications	WB, IHC	Conjugation	Unconjugated
Form / Buffer	Liquid in 0.42% Potassium phosphate, 0.87% Sodium chloride, pH 7.3, 30% glycerol, and 0.01% sodium azide.		Storage at -20°C

BACKGROUND

May regulate the number of excitatory synapses that are formed on hippocampus neurons. Has no effect on inhibitory synapses.

APPLICATION

To ensure optimal assay performance, AREX recommends conducting reagent titration tailored to each testing system for optimal detection results.

WB	1:500 - 1:1000
IHC	1:50 - 1:100

*Results are sample-specific. Please refer to your local assay conditions and test parameters for reference.

PRODUCT OVERVIEW

Description	Rabbit polyclonal antibody to C1QL2
Specificity	Recognizes endogenous levels of C1QL2 protein.
Antibody Type	Primary antibody
Immunogen	KLH-conjugated synthetic peptide encompassing a sequence within the C-term region of human C1QL2. The exact sequence is proprietary.
Purification	The antibody was purified by immunogen affinity chromatography.
Molecular Weight	Predicted: 29 kD; Observed: 32-36 kD
Form/Buffer	Liquid in 0.42% Potassium phosphate, 0.87% Sodium chloride, pH 7.3, 30% glycerol, and 0.01% sodium azide.
Alternative Names	CTRP10; Complement C1q-like protein 2; C1q and tumor necrosis factor-related protein 10; C1q/TNF-related protein 10
Gene Symbol	C1QL2
Entrez Gene	165257(Human); 226359(Mouse)
SwissProt	Q7Z5L3(Human); Q8CFR0(Mouse)

*AREX continuously optimizes our products. Webpage content may not reflect the latest updates. For inquiries, please contact info@arexbio.com or your local distributor.

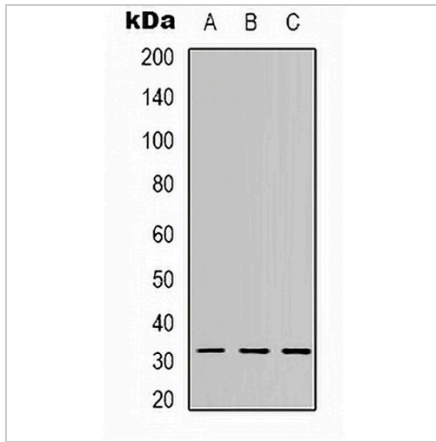
*Clone Number, Reactivity, Source/Host and Clonality can be found in the product name and Key Features section above.

DATASHEET

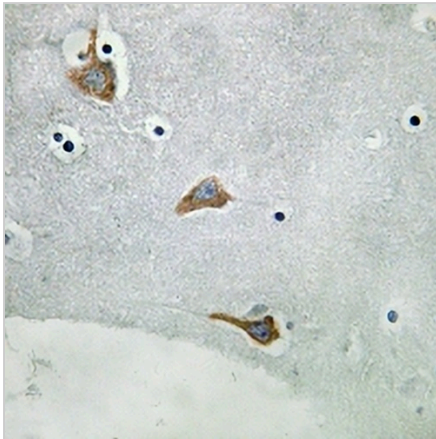
C1QL2 Rabbit Polyclonal Antibody

CAT. NO. APA10398

DATA



Western blot analysis of C1QL2 expression in A549 (A), MCF7 (B), HeLa (C) whole cell lysates. (Predicted band size: 29 kD; Observed band size: 32-36 kD)



Immunohistochemical analysis of C1QL2 staining in human brain formalin fixed paraffin embedded tissue section. The section was pre-treated using heat mediated antigen retrieval with sodium citrate buffer (pH 6.0). The section was then incubated with the antibody at room temperature and detected using an HRP conjugated compact polymer system. DAB was used as the chromogen. The section was then counterstained with haematoxylin and mounted with DPX.

STORAGE

Store at 4°C short term. For long term storage, store at -20°C, avoiding freeze/thaw cycles.

NOTE

For Research Use Only. Not for diagnostic, therapeutics, prophylactic or in vivo use.