

## DATASHEET

# MCT12 Rabbit Polyclonal Antibody

CAT. NO. APA10410

### KEY FEATURES

Target	MCT12	Source / Host	Rabbit
Reactivity	Human, Mouse	Clonality	Polyclonal
Applications	WB, IHC	Conjugation	Unconjugated
Form / Buffer	Liquid in 0.42% Potassium phosphate, 0.87% Sodium chloride, pH 7.3, 30% glycerol, and 0.01% sodium azide.		Storage at -20°C

### BACKGROUND

Functions as a transporter for creatine and as well for its precursor guanidinoacetate. Transport of creatine and GAA is independent of resting membrane potential and extracellular Na(+), Cl(-), or pH. Contributes to the process of creatine biosynthesis and distribution.

### APPLICATION

To ensure optimal assay performance, AREX recommends conducting reagent titration tailored to each testing system for optimal detection results.

WB	1:500 - 1:1000
IHC	1:100 - 1:200

\*Results are sample-specific. Please refer to your local assay conditions and test parameters for reference.

### PRODUCT OVERVIEW

Description	Rabbit polyclonal antibody to MCT12
Specificity	Recognizes endogenous levels of MCT12 protein.
Antibody Type	Primary antibody
Immunogen	KLH-conjugated synthetic peptide encompassing a sequence within the center region of human MCT12. The exact sequence is proprietary.
Purification	The antibody was purified by immunogen affinity chromatography.
Molecular Weight	Predicted: 56 kD; Observed: 60 kD
Form/Buffer	Liquid in 0.42% Potassium phosphate, 0.87% Sodium chloride, pH 7.3, 30% glycerol, and 0.01% sodium azide.
Alternative Names	MCT12; Monocarboxylate transporter 12; MCT 12; Solute carrier family 16 member 12
Gene Symbol	SLC16A12
Entrez Gene	387700(Human); 240638(Mouse)
SwissProt	Q6ZSM3(Human); Q8BGC3(Mouse)

\*AREX continuously optimizes our products. Webpage content may not reflect the latest updates. For inquiries, please contact [info@arexbio.com](mailto:info@arexbio.com) or your local distributor.

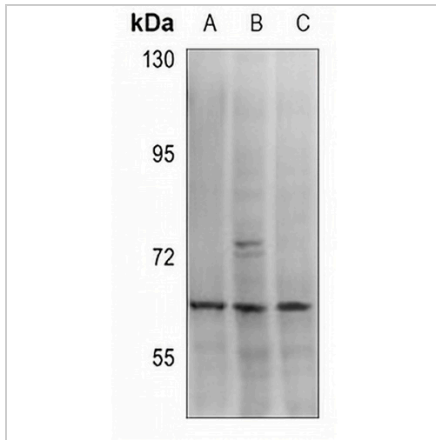
\*Clone Number, Reactivity, Source/Host and Clonality can be found in the product name and Key Features section above.

**DATASHEET**

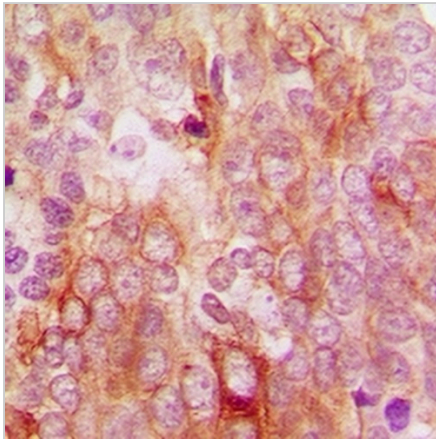
**MCT12 Rabbit Polyclonal Antibody**

CAT. NO. APA10410

**DATA**



Western blot analysis of MCT12 expression in HEK293T (A), A549 (B), HepG2 (C) whole cell lysates. (Predicted band size: 56 kD; Observed band size: 60 kD)



Immunohistochemical analysis of MCT12 staining in human breast cancer formalin fixed paraffin embedded tissue section. The section was pre-treated using heat mediated antigen retrieval with sodium citrate buffer (pH 6.0). The section was then incubated with the antibody at room temperature and detected using an HRP conjugated compact polymer system. DAB was used as the chromogen. The section was then counterstained with haematoxylin and mounted with DPX.

**STORAGE**

Store at 4°C short term. For long term storage, store at -20°C, avoiding freeze/thaw cycles.

**NOTE**

For Research Use Only. Not for diagnostic, therapeutics, prophylactic or in vivo use.