

## DATASHEET

# ME3 Rabbit Polyclonal Antibody

CAT. NO. APA10412

### KEY FEATURES

Target	ME3	Source / Host	Rabbit
Reactivity	Human, Mouse	Clonality	Polyclonal
Applications	WB, IHC	Conjugation	Unconjugated
Form / Buffer	Liquid in 0.42% Potassium phosphate, 0.87% Sodium chloride, pH 7.3, 30% glycerol, and 0.01% sodium azide.		Storage at -20°C

### BACKGROUND

Catalyzes the oxidative decarboxylation of (S)-malate to pyruvate using NADP(+) as a cofactor -malate to pyruvate using NADP(+) as a cofactor . Can also reverse the decarboxylation reaction, but only with significantly lower efficiency .

### APPLICATION

To ensure optimal assay performance, AREX recommends conducting reagent titration tailored to each testing system for optimal detection results.

WB	1:500 - 1:1000
IHC	1:100 - 1:200

\*Results are sample-specific. Please refer to your local assay conditions and test parameters for reference.

### PRODUCT OVERVIEW

Description	Rabbit polyclonal antibody to ME3
Specificity	Recognizes endogenous levels of ME3 protein.
Antibody Type	Primary antibody
Immunogen	KLH-conjugated synthetic peptide encompassing a sequence within the C-term region of human ME3. The exact sequence is proprietary.
Purification	The antibody was purified by immunogen affinity chromatography.
Molecular Weight	Predicted: 38; Observed: 67 kD
Form/Buffer	Liquid in 0.42% Potassium phosphate, 0.87% Sodium chloride, pH 7.3, 30% glycerol, and 0.01% sodium azide.
Alternative Names	NADP-dependent malic enzyme mitochondrial; NADP-ME; Malic enzyme 3
Gene Symbol	ME3
Entrez Gene	10873(Human); 109264(Mouse)
SwissProt	Q16798(Human); Q8BMF3(Mouse)

\*AREX continuously optimizes our products. Webpage content may not reflect the latest updates. For inquiries, please contact [info@arexbio.com](mailto:info@arexbio.com) or your local distributor.

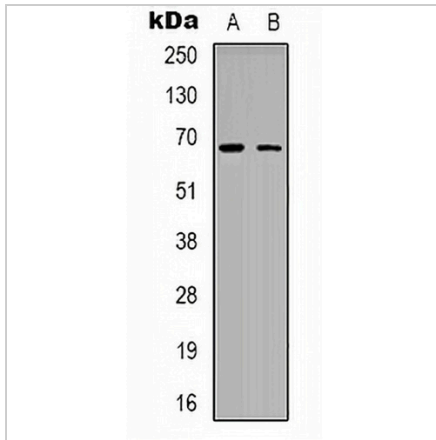
\*Clone Number, Reactivity, Source/Host and Clonality can be found in the product name and Key Features section above.

**DATASHEET**

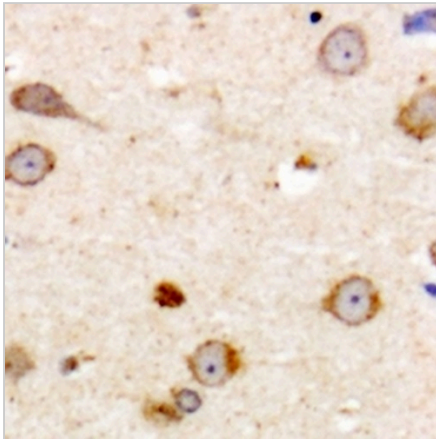
**ME3 Rabbit Polyclonal Antibody**

CAT. NO. APA10412

**DATA**



Western blot analysis of ME3 expression in HeLa (A), NIH3T3 (B) whole cell lysates. (Predicted band size: 38; 67 kD; Observed band size: 67 kD)



Immunohistochemical analysis of ME3 staining in human brain formalin fixed paraffin embedded tissue section. The section was pre-treated using heat mediated antigen retrieval with sodium citrate buffer (pH 6.0). The section was then incubated with the antibody at room temperature and detected using an HRP conjugated compact polymer system. DAB was used as the chromogen. The section was then counterstained with haematoxylin and mounted with DPX.

**STORAGE**

Store at 4°C short term. For long term storage, store at -20°C, avoiding freeze/thaw cycles.

**NOTE**

For Research Use Only. Not for diagnostic, therapeutics, prophylactic or in vivo use.