

## DATASHEET

# NBPF5 Rabbit Polyclonal Antibody

CAT. NO. APA10413

### KEY FEATURES

Target	NBPF5	Source / Host	Rabbit
Reactivity	Human, Mouse, Rat	Clonality	Polyclonal
Applications	WB, IHC	Conjugation	Unconjugated
Form / Buffer	Liquid in 0.42% Potassium phosphate, 0.87% Sodium chloride, pH 7.3, 30% glycerol, and 0.01% sodium azide.		Storage at -20°C

### BACKGROUND

Putative NBPF family member NBPF5 (NBPF5P), also known as Putative neuroblastoma breakpoint family member 5. Belongs to the NBPF family Subcellular location: Cytoplasm Tissue specificity: Expressed in brain and medulla

### APPLICATION

To ensure optimal assay performance, AREX recommends conducting reagent titration tailored to each testing system for optimal detection results.

WB	1:500 - 1:1000
IHC	1:100 - 1:200

\*Results are sample-specific. Please refer to your local assay conditions and test parameters for reference.

### PRODUCT OVERVIEW

Description	Rabbit polyclonal antibody to NBPF5
Specificity	Recognizes endogenous levels of NBPF5 protein.
Antibody Type	Primary antibody
Immunogen	KLH-conjugated synthetic peptide encompassing a sequence within the C-term region of human NBPF5. The exact sequence is proprietary.
Purification	The antibody was purified by immunogen affinity chromatography.
Molecular Weight	Predicted: 40 kD; Observed: 50 kD
Form/Buffer	Liquid in 0.42% Potassium phosphate, 0.87% Sodium chloride, pH 7.3, 30% glycerol, and 0.01% sodium azide.
Alternative Names	NBPF5; Putative neuroblastoma breakpoint family member 5
Gene Symbol	NBPF5P
SwissProt	Q86XG9(Human)

\*AREX continuously optimizes our products. Webpage content may not reflect the latest updates. For inquiries, please contact [info@arexbio.com](mailto:info@arexbio.com) or your local distributor.

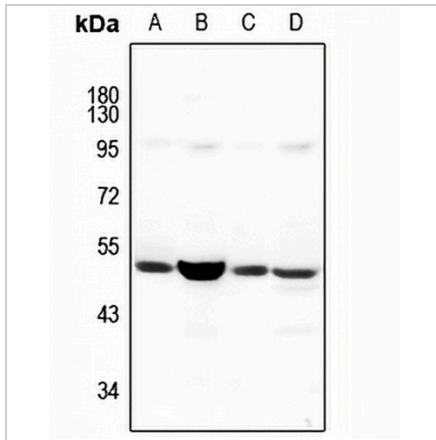
\*Clone Number, Reactivity, Source/Host and Clonality can be found in the product name and Key Features section above.

**DATASHEET**

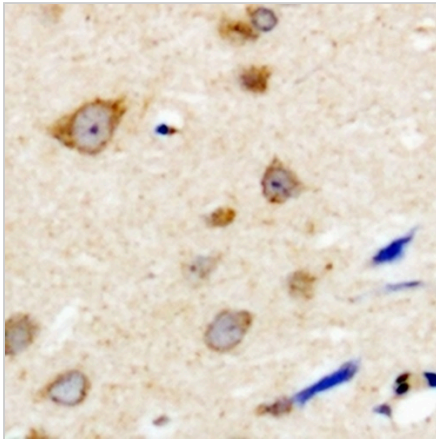
**NBPF5 Rabbit Polyclonal Antibody**

CAT. NO. APA10413

**DATA**



Western blot analysis of NBPF5 expression in mouse brain (A), rat brain (B), MCF7 (C), HeLa (D) whole cell lysates. (Predicted band size: 40 kD; Observed band size: 50 kD)



Immunohistochemical analysis of NBPF5 staining in human brain formalin fixed paraffin embedded tissue section. The section was pre-treated using heat mediated antigen retrieval with sodium citrate buffer (pH 6.0). The section was then incubated with the antibody at room temperature and detected using an HRP conjugated compact polymer system. DAB was used as the chromogen. The section was then counterstained with haematoxylin and mounted with DPX.

**STORAGE**

Store at 4°C short term. For long term storage, store at -20°C, avoiding freeze/thaw cycles.

**NOTE**

For Research Use Only. Not for diagnostic, therapeutics, prophylactic or in vivo use.