

**DATASHEET**

**SVOP Rabbit Polyclonal Antibody**

CAT. NO. APA10434

**KEY FEATURES**

Target	SVOP	Source / Host	Rabbit
Reactivity	Human, Mouse, Rat, Bovine	Clonality	Polyclonal
Applications	WB, IHC	Conjugation	Unconjugated
Form / Buffer	Liquid in 0.42% Potassium phosphate, 0.87% Sodium chloride, pH 7.3, 30% glycerol, and 0.01% sodium azide.		Storage at -20°C

**BACKGROUND**

Synaptic vesicle 2-related protein (SVOP). Belongs to the major facilitator superfamily Subcellular location: Cytoplasmic vesicle, secretory vesicle, synaptic vesicle membrane

**APPLICATION**

To ensure optimal assay performance, AREX recommends conducting reagent titration tailored to each testing system for optimal detection results.

WB	1:500 - 1:1000
IHC	1:100 - 1:200

\*Results are sample-specific. Please refer to your local assay conditions and test parameters for reference.

**PRODUCT OVERVIEW**

Description	Rabbit polyclonal antibody to SVOP
Specificity	Recognizes endogenous levels of SVOP protein.
Antibody Type	Primary antibody
Immunogen	KLH-conjugated synthetic peptide encompassing a sequence within the center region of human SVOP. The exact sequence is proprietary.
Purification	The antibody was purified by immunogen affinity chromatography.
Molecular Weight	Predicted: 60 kD; Observed: 70 kD
Form/Buffer	Liquid in 0.42% Potassium phosphate, 0.87% Sodium chloride, pH 7.3, 30% glycerol, and 0.01% sodium azide.
Alternative Names	Synaptic vesicle 2-related protein; SV2-related protein
Gene Symbol	SVOP
Entrez Gene	55530(Human); 68666(Mouse); 171442(Rat)
SwissProt	Q8N4V2(Human); Q8BFT9(Mouse); Q9Z2I7(Rat)

\*AREX continuously optimizes our products. Webpage content may not reflect the latest updates. For inquiries, please contact [info@arexbio.com](mailto:info@arexbio.com) or your local distributor.

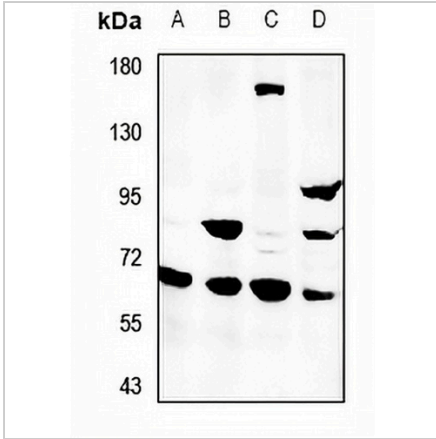
\*Clone Number, Reactivity, Source/Host and Clonality can be found in the product name and Key Features section above.

**DATASHEET**

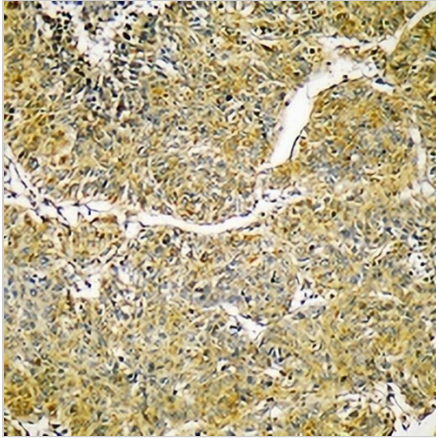
**SVOP Rabbit Polyclonal Antibody**

CAT. NO. APA10434

**DATA**



Western blot analysis of SVOP expression in CT26 (A), PC12 (B), MCF7 (C), HeLa (D) whole cell lysates. (Predicted band size: 60 kD; Observed band size: 70 kD)



Immunohistochemical analysis of SVOP staining in human liver cancer formalin fixed paraffin embedded tissue section. The section was pre-treated using heat mediated antigen retrieval with sodium citrate buffer (pH 6.0). The section was then incubated with the antibody at room temperature and detected using an HRP conjugated compact polymer system. DAB was used as the chromogen. The section was then counterstained with haematoxylin and mounted with DPX.

**STORAGE**

Store at 4°C short term. For long term storage, store at -20°C, avoiding freeze/thaw cycles.

**NOTE**

For Research Use Only. Not for diagnostic, therapeutics, prophylactic or in vivo use.