

DATASHEET

CD316 Rabbit Polyclonal Antibody

CAT. NO. APA10461

KEY FEATURES

Target	CD316	Source / Host	Rabbit
Reactivity	Human, Mouse	Clonality	Polyclonal
Applications	WB, IHC	Conjugation	Unconjugated
Form / Buffer	Liquid in 0.42% Potassium phosphate, 0.87% Sodium chloride, pH 7.3, 30% glycerol, and 0.01% sodium azide.		Storage at -20°C

BACKGROUND

Member of the immunoglobulin superfamily (IgSF) that links tetraspanin-enriched microdomains to the actin cytoskeleton and plays several important roles in innate and adaptive immunity that links tetraspanin-enriched microdomains to the actin cytoskeleton and plays several important roles in innate and adaptive immunity . Acts as an inducible receptor of HSPA8 on dendritic cells to enhance the CCL21/SLC-dependent migration of activated mature dendritic cells while attenuating their antigen-specific stimulatory capacities . In complex with alpha-actinins ACTN1 and ACTN4, regulates actin dynamics in the immune synapse and subsequent T-cell activation . Inhibits the entry of several viruses such as hepatitis C Virus (HCV) or HIV-1.

APPLICATION

To ensure optimal assay performance, AREX recommends conducting reagent titration tailored to each testing system for optimal detection results.

WB	1:500 - 1:1000
IHC	1:50 - 1:100

*Results are sample-specific. Please refer to your local assay conditions and test parameters for reference.

PRODUCT OVERVIEW

Description	Rabbit polyclonal antibody to CD316
Specificity	Recognizes endogenous levels of CD316 protein.
Antibody Type	Primary antibody
Immunogen	KLH-conjugated synthetic peptide encompassing a sequence within the center region of human CD316. The exact sequence is proprietary.
Purification	The antibody was purified by immunogen affinity chromatography.
Molecular Weight	Predicted: 65 kD; Observed: 65 kD
Form/Buffer	Liquid in 0.42% Potassium phosphate, 0.87% Sodium chloride, pH 7.3, 30% glycerol, and 0.01% sodium azide.
Alternative Names	CD81P3; EWI2; KCT4; Immunoglobulin superfamily member 8; IgSF8; CD81 partner 3; Glu-Trp-Ile EWI motif-containing protein 2; EWI-2; Keratinocytes-associated transmembrane protein 4; KCT-4; LIR-D1; Prostaglandin regulatory-like protein; PGRL; CD316
Gene Symbol	IGSF8
Entrez Gene	93185(Human); 140559(Mouse)
SwissProt	Q969P0(Human); Q8R366(Mouse)

*AREX continuously optimizes our products. Webpage content may not reflect the latest updates. For inquiries, please contact info@arexbio.com or your local distributor.

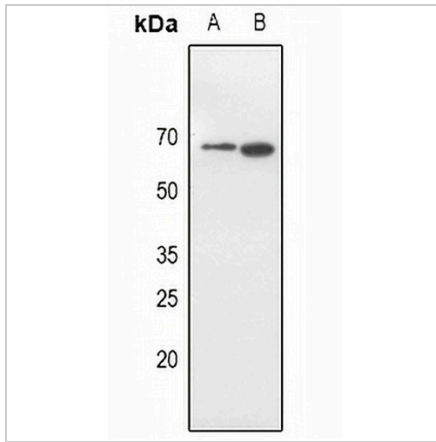
*Clone Number, Reactivity, Source/Host and Clonality can be found in the product name and Key Features section above.

DATASHEET

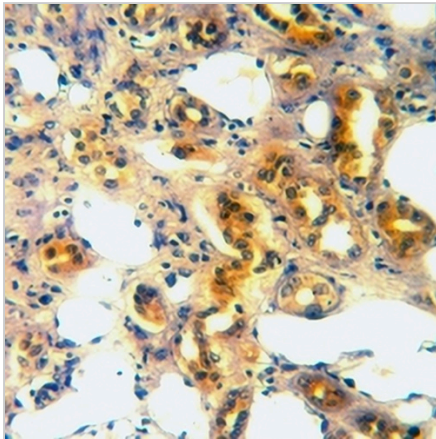
CD316 Rabbit Polyclonal Antibody

CAT. NO. APA10461

DATA



Western blot analysis of CD316 expression in HEK293T (A), HeLa (B) whole cell lysates. (Predicted band size: 65 kD; Observed band size: 65 kD)



Immunohistochemical analysis of CD316 staining in human kidney cancer formalin fixed paraffin embedded tissue section. The section was pre-treated using heat mediated antigen retrieval with sodium citrate buffer (pH 6.0). The section was then incubated with the antibody at room temperature and detected using an HRP conjugated compact polymer system. DAB was used as the chromogen. The section was then counterstained with haematoxylin and mounted with DPX.

STORAGE

Store at 4°C short term. For long term storage, store at -20°C, avoiding freeze/thaw cycles.

NOTE

For Research Use Only. Not for diagnostic, therapeutics, prophylactic or in vivo use.