

DATASHEET

GPR37L1 Rabbit Polyclonal Antibody

CAT. NO. APA10466

KEY FEATURES

Target	GPR37L1	Source / Host	Rabbit
Reactivity	Human, Monkey	Clonality	Polyclonal
Applications	WB, IF/ICC	Conjugation	Unconjugated
Form / Buffer	Liquid in 0.42% Potassium phosphate, 0.87% Sodium chloride, pH 7.3, 30% glycerol, and 0.01% sodium azide.		Storage at-20°C

BACKGROUND

G-protein coupled receptor . Has been shown to bind the neuroprotective and glioprotective factor prosaposin (PSAP), leading to endocytosis followed by an ERK phosphorylation cascade . However, other studies have shown that prosaposin does not increase activity . It has been suggested that GPR37L1 is a constitutively active receptor which signals through the guanine nucleotide-binding protein G(s) subunit alpha . Participates in the regulation of postnatal cerebellar development by modulating the Shh pathway . Regulates baseline blood pressure in females and protects against cardiovascular stress in males . Mediates inhibition of astrocyte glutamate transporters and reduction in neuronal N-methyl-D-aspartate receptor activity .

APPLICATION

To ensure optimal assay performance, AREX recommends conducting reagent titration tailored to each testing system for optimal detection results.

WB	1:500 - 1:1000
IF/ICC	1:50 - 1:200

*Results are sample-specific. Please refer to your local assay conditions and test parameters for reference.

PRODUCT OVERVIEW

Description	Rabbit polyclonal antibody to GPR37L1
Specificity	Recognizes endogenous levels of GPR37L1 protein.
Antibody Type	Primary antibody
Immunogen	KLH-conjugated synthetic peptide encompassing a sequence within the N-term region of human GPR37L1. The exact sequence is proprietary.
Purification	The antibody was purified by immunogen affinity chromatography.
Molecular Weight	Predicted: 52 kD; Observed: 60 kD
Form/Buffer	Liquid in 0.42% Potassium phosphate, 0.87% Sodium chloride, pH 7.3, 30% glycerol, and 0.01% sodium azide.
Alternative Names	ETBRLP2; Prosaposin receptor GPR37L1; Endothelin B receptor-like protein 2; ETBR-LP-2; G-protein coupled receptor 37-like 1
Gene Symbol	GPR37L1
Entrez Gene	9283(Human)
SwissProt	O60883(Human)

*AREX continuously optimizes our products. Webpage content may not reflect the latest updates. For inquiries, please contact info@arexbio.com or your local distributor.

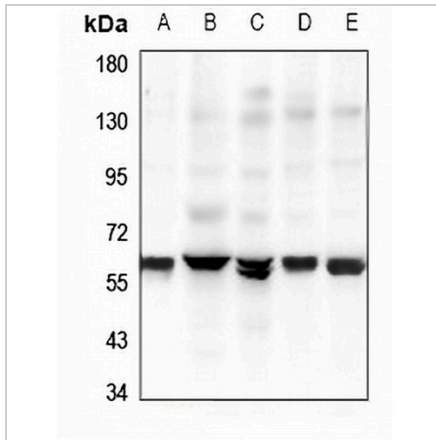
*Clone Number, Reactivity, Source/Host and Clonality can be found in the product name and Key Features section above.

DATASHEET

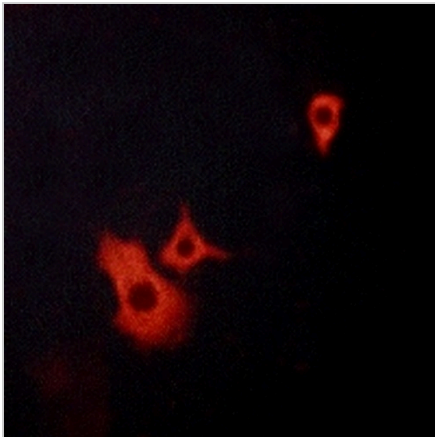
GPR37L1 Rabbit Polyclonal Antibody

CAT. NO. APA10466

DATA



Western blot analysis of GPR37L1 expression in SKOV3 (A), HEK293T (B), A549 (C), LO2 (D), EC9706 (E) whole cell lysates. (Predicted band size: 52 kD; Observed band size: 60 kD)



Immunofluorescent analysis of GPR37L1 staining in LOVO cells. Formalin-fixed cells were permeabilized with 0.1% Triton X-100 in TBS for 5-10 minutes and blocked with 3% BSA-PBS for 30 minutes at room temperature. Cells were probed with the primary antibody in 3% BSA-PBS and incubated overnight at 4 °C in a humidified chamber. Cells were washed with PBST and incubated with a AREX® Fluor 594-conjugated secondary antibody (red) in PBS at room temperature in the dark.

STORAGE

Store at 4°C short term. For long term storage, store at -20°C, avoiding freeze/thaw cycles.

NOTE

For Research Use Only. Not for diagnostic, therapeutics, prophylactic or in vivo use.