

DATASHEET

Synapsin 1 (Phospho-S553) Rabbit Polyclonal Antibody

CAT. NO. APA10479

KEY FEATURES

Target	Synapsin 1 (Phospho-S553)	Source / Host	Rabbit
Reactivity	Human, Mouse, Rat, Bovine, Dog	Clonality	Polyclonal
Applications	WB	Conjugation	Unconjugated
Form / Buffer	Liquid in 0.42% Potassium phosphate, 0.87% Sodium chloride, pH 7.3, 30% glycerol, and 0.01% sodium azide.	Storage	at-20°C

BACKGROUND

Neuronal phosphoprotein that coats synaptic vesicles, and binds to the cytoskeleton. Acts as a regulator of synaptic vesicles trafficking, involved in the control of neurotransmitter release at the pre-synaptic terminal . Also involved in the regulation of axon outgrowth and synaptogenesis . The complex formed with NOS1 and CAPON proteins is necessary for specific nitric-oxid functions at a presynaptic level .

APPLICATION

To ensure optimal assay performance, AREX recommends conducting reagent titration tailored to each testing system for optimal detection results.

WB	1:500 - 1:1000
----	----------------

*Results are sample-specific. Please refer to your local assay conditions and test parameters for reference.

PRODUCT OVERVIEW

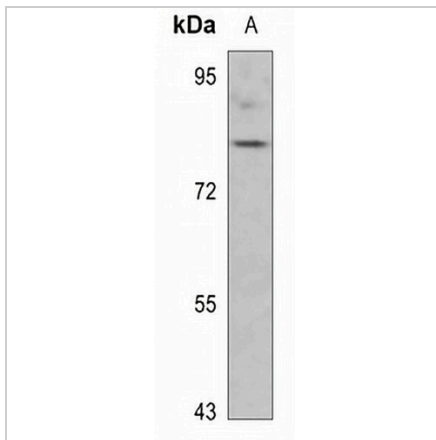
Description	Rabbit polyclonal antibody to Synapsin 1 (Phospho-S553)
Specificity	Recognizes endogenous levels of Synapsin 1 protein only when phosphorylated at S553.
Antibody Type	Primary antibody
Immunogen	KLH-conjugated synthetic phosphopeptide corresponding to residues surrounding S553 of human Synapsin 1 protein. The exact sequence is proprietary.
Purification	The antibody was purified by immunogen affinity chromatography.
Molecular Weight	Predicted: 74 kD; Observed: 77 kD
Form/Buffer	Liquid in 0.42% Potassium phosphate, 0.87% Sodium chloride, pH 7.3, 30% glycerol, and 0.01% sodium azide.
Alternative Names	Synapsin-1; Brain protein 4.1; Synapsin I
Gene Symbol	SYN1
Entrez Gene	6853(Human); 20964(Mouse); 24949(Rat)
SwissProt	P17600(Human); O88935(Mouse); P09951(Rat)

*AREX continuously optimizes our products. Webpage content may not reflect the latest updates. For inquiries, please contact info@arexbio.com or your local distributor.

*Clone Number, Reactivity, Source/Host and Clonality can be found in the product name and Key Features section above.

DATASHEET**Synapsin 1 (Phospho-S553) Rabbit Polyclonal Antibody**

CAT. NO. APA10479

DATA

Western blot analysis of Synapsin 1 (Phospho-S553) expression in rat brain (A) whole cell lysates. (Predicted band size: 74 kD; Observed band size: 77 kD)

STORAGE

Store at 4°C short term. For long term storage, store at -20°C, avoiding freeze/thaw cycles.

NOTE

For Research Use Only. Not for diagnostic, therapeutics, prophylactic or in vivo use.