

DATASHEET

FOXO1 (Phospho-S256) Rabbit Polyclonal Antibody

CAT. NO. APA10480

KEY FEATURES

Target	FOXO1 (Phospho-S256)	Source / Host	Rabbit
Reactivity	Human, Mouse, Rat, Bovine, Pig, Zebrafish	Clonality	Polyclonal
Applications	WB, IHC, IF/ICC, IP	Conjugation	Unconjugated
Form / Buffer	Liquid in 0.42% Potassium phosphate, 0.87% Sodium chloride, pH 7.3, 30% glycerol, and 0.01% sodium azide.	Storage	at-20°C

BACKGROUND

Transcription factor that is the main target of insulin signaling and regulates metabolic homeostasis in response to oxidative stress . Binds to the insulin response element (IRE) with consensus sequence 5'-TT[G/A]TTTTG-3' and the related Daf-16 family binding element (DBE) with consensus sequence 5'-TT[G/A]TTTAC-3' . Activity suppressed by insulin . Main regulator of redox balance and osteoblast numbers and controls bone mass . Orchestrates the endocrine function of the skeleton in regulating glucose metabolism .

APPLICATION

To ensure optimal assay performance, AREX recommends conducting reagent titration tailored to each testing system for optimal detection results.

WB	1:500 - 1:1000
IHC	1:100 - 1:200
IF/ICC	1:100 - 1:500
IP	1:10 - 1:100

*Results are sample-specific. Please refer to your local assay conditions and test parameters for reference.

PRODUCT OVERVIEW

Description	Rabbit polyclonal antibody to FOXO1 (Phospho-S256)
Specificity	Recognizes endogenous levels of FOXO1 protein only when phosphorylated at S256.
Antibody Type	Primary antibody
Immunogen	KLH-conjugated synthetic phosphopeptide corresponding to residues surrounding S256 of human FOXO1 protein. The exact sequence is proprietary.
Purification	The antibody was purified by immunogen affinity chromatography.
Molecular Weight	Predicted: 69 kD; Observed: 70; 95 kD
Form/Buffer	Liquid in 0.42% Potassium phosphate, 0.87% Sodium chloride, pH 7.3, 30% glycerol, and 0.01% sodium azide.
Alternative Names	FKHR; FOXO1A; Forkhead box protein O1; Forkhead box protein O1A; Forkhead in rhabdomyosarcoma
Gene Symbol	FOXO1
Entrez Gene	2308(Human); 56458(Mouse); 84482(Rat)
SwissProt	Q12778(Human); Q9R1E0(Mouse); G3V7R4(Rat)

*AREX continuously optimizes our products. Webpage content may not reflect the latest updates. For inquiries, please contact info@arexbio.com or your local distributor.

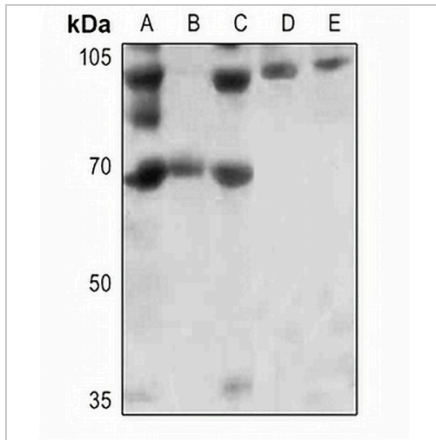
*Clone Number, Reactivity, Source/Host and Clonality can be found in the product name and Key Features section above.

DATASHEET

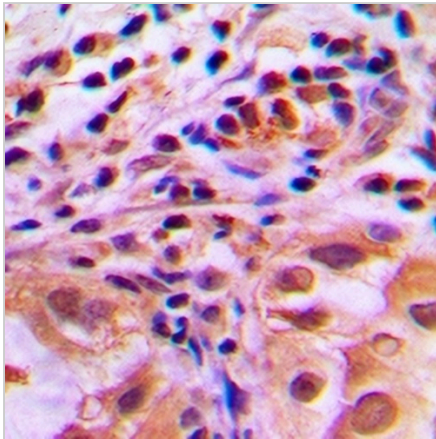
FOXO1 (Phospho-S256) Rabbit Polyclonal Antibody

CAT. NO. APA10480

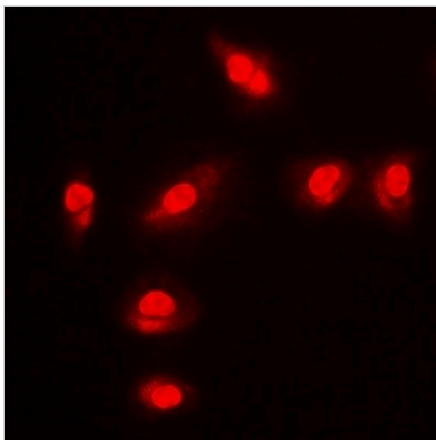
DATA



Western blot analysis of FOXO1 (Phospho-S256) expression in HEK293T (A), HeLa (B), K562 (C), mouse brain (D), rat brain (E) whole cell lysates. (Predicted band size: 69 kD; Observed band size: 70; 95 kD)



Immunohistochemical analysis of FOXO1 (Phospho-S256) staining in human lung cancer formalin fixed paraffin embedded tissue section. The section was pre-treated using heat mediated antigen retrieval with sodium citrate buffer (pH 6.0). The section was then incubated with the antibody at room temperature and detected using an HRP conjugated compact polymer system. DAB was used as the chromogen. The section was then counterstained with haematoxylin and mounted with DPX.



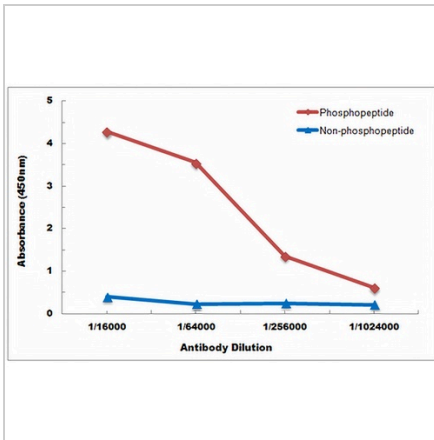
Immunofluorescent analysis of FOXO1 (Phospho-S256) staining in MCF7 cells. Formalin-fixed cells were permeabilized with 0.1% Triton X-100 in TBS for 5-10 minutes and blocked with 3% BSA-PBS for 30 minutes at room temperature. Cells were probed with the primary antibody in 3% BSA-PBS and incubated overnight at 4 °C in a humidified chamber. Cells were washed with PBST and incubated with a DyLight 594-conjugated secondary antibody (red) in PBS at room temperature in the dark.

DATASHEET

FOXO1 (Phospho-S256) Rabbit Polyclonal Antibody

CAT. NO. APA10480

DATA (CONTINUED)



Direct ELISA antibody dose-response curve using Anti-FOXO1 (Phospho-S256) Antibody. Antigen (Phosphopeptide and non-phosphopeptide) concentration is 5 ug/ml. Goat Anti-Rabbit IgG (H&L) - HRP was used as the secondary antibody, and signal was developed by TMB substrate.

STORAGE

Store at 4°C short term. For long term storage, store at -20°C, avoiding freeze/thaw cycles.

NOTE

For Research Use Only. Not for diagnostic, therapeutics, prophylactic or in vivo use.