

## DATASHEET

# HSP20 (Phospho-S16) Rabbit Polyclonal Antibody

CAT. NO. APA10489

### KEY FEATURES

|               |   |               |                     |
|---------------|---|---------------|---------------------|
| Target        | HSP20 (Phospho-S16)   | Source / Host | Rabbit              |
| Reactivity    | Human, Mouse, Rat, Bovine, Monkey   | Clonality     | Polyclonal          |
| Applications  | WB, IHC, IF/ICC   | Conjugation   | Unconjugated        |
| Form / Buffer | Liquid in 0.42% Potassium phosphate, 0.87% Sodium chloride, pH 7.3, 30% glycerol, and 0.01% sodium azide. |               | Storage<br>at -20°C |

### BACKGROUND

Small heat shock protein which functions as a molecular chaperone probably maintaining denatured proteins in a folding-competent state. Seems to have versatile functions in various biological processes. Plays a role in regulating muscle function such as smooth muscle vasorelaxation and cardiac myocyte contractility. May regulate myocardial angiogenesis implicating KDR. Overexpression mediates cardioprotection and angiogenesis after induced damage. Stabilizes monomeric YWHAZ thereby supporting YWHAZ chaperone-like activity.

### APPLICATION

To ensure optimal assay performance, AREX recommends conducting reagent titration tailored to each testing system for optimal detection results.

|        |                |
|--------|----------------|
| WB     | 1:500 - 1:2000 |
| IHC    | 1:50 - 1:200   |
| IF/ICC | 1:50 - 1:100   |

\*Results are sample-specific. Please refer to your local assay conditions and test parameters for reference.

### PRODUCT OVERVIEW

|                   |  |
|-------------------|--|
| Description       | Rabbit polyclonal antibody to HSP20 (Phospho-S16)  |
| Specificity       | Recognizes endogenous levels of HSP20 protein only when phosphorylated at S16.   |
| Antibody Type     | Primary antibody   |
| Immunogen         | KLH-conjugated synthetic phosphopeptide corresponding to residues surrounding S16 of human HSP20 protein. The exact sequence is proprietary. |
| Purification      | The antibody was purified by immunogen affinity chromatography.  |
| Molecular Weight  | Predicted: 17 kD; Observed: 20 kD  |
| Form/Buffer       | Liquid in 0.42% Potassium phosphate, 0.87% Sodium chloride, pH 7.3, 30% glycerol, and 0.01% sodium azide.                                    |
| Alternative Names | Heat shock protein beta-6; HspB6; Heat shock 20 kDa-like protein p20   |
| Gene Symbol       | HSPB6  |
| Entrez Gene       | 126393(Human); 243912(Mouse); 192245(Rat)  |
| SwissProt         | O14558(Human); Q5EBG6(Mouse); P97541(Rat)  |

\*AREX continuously optimizes our products. Webpage content may not reflect the latest updates. For inquiries, please contact [info@arexbio.com](mailto:info@arexbio.com) or your local distributor.

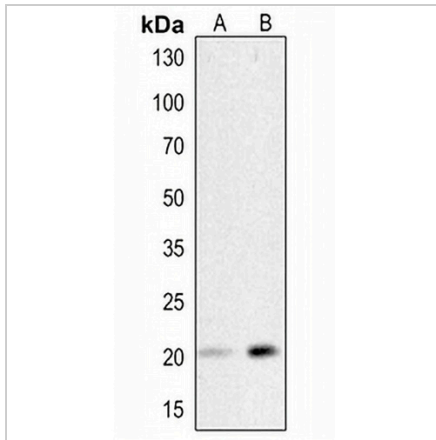
\*Clone Number, Reactivity, Source/Host and Clonality can be found in the product name and Key Features section above.

**DATASHEET**

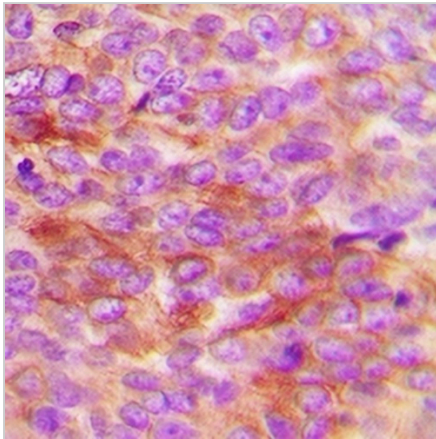
**HSP20 (Phospho-S16) Rabbit Polyclonal Antibody**

CAT. NO. APA10489

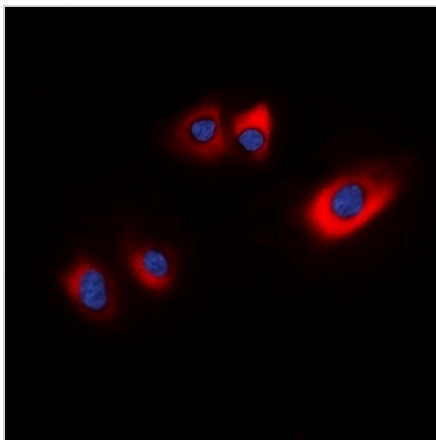
**DATA**



Western blot analysis of HSP20 (Phospho-S16) expression in H460 (A), rat heart (B) whole cell lysates. (Predicted band size: 17 kD; Observed band size: 20 kD)



Immunohistochemical analysis of HSP20 (Phospho-S16) staining in human breast cancer formalin fixed paraffin embedded tissue section. The section was pre-treated using heat mediated antigen retrieval with sodium citrate buffer (pH 6.0). The section was then incubated with the antibody at room temperature and detected using an HRP conjugated compact polymer system. DAB was used as the chromogen. The section was then counterstained with haematoxylin and mounted with DPX.



Immunofluorescent analysis of HSP20 (Phospho-S16) staining in HEK293T cells. Formalin-fixed cells were permeabilized with 0.1% Triton X-100 in TBS for 5-10 minutes and blocked with 3% BSA-PBS for 30 minutes at room temperature. Cells were probed with the primary antibody in 3% BSA-PBS and incubated overnight at 4 °C in a humidified chamber. Cells were washed with PBST and incubated with a DyLight 594-conjugated secondary antibody (red) in PBS at room temperature in the dark. DAPI was used to stain the cell nuclei (blue).

**STORAGE**

Store at 4°C short term. For long term storage, store at -20°C, avoiding freeze/thaw cycles.

**NOTE**

For Research Use Only. Not for diagnostic, therapeutics, prophylactic or in vivo use.