

DATASHEET

TMEM16J Rabbit Polyclonal Antibody

CAT. NO. APA10501

KEY FEATURES

Target	TMEM16J	Source / Host	Rabbit
Reactivity	Human, Mouse	Clonality	Polyclonal
Applications	WB, IHC, IF/ICC	Conjugation	Unconjugated
Form / Buffer	Liquid in 0.42% Potassium phosphate, 0.87% Sodium chloride, pH 7.3, 30% glycerol, and 0.01% sodium azide.		Storage at -20°C

BACKGROUND

PKA-activated nonselective cation channel . Discriminates poorly among cations but is more permeable to Ca(2+) ions than to monovalent cations . Acts as a calcium-activated calcium permeable channel which may operate as a endoplasmic reticulum (ER) Ca(2+)-leak channel, reducing the loading of the ER Ca(2+) store . Regulates intracellular Ca2+ signals, ion channel activity, and cytokine release in the renal tissue . Plays an important role in olfaction, amplifying cAMP-evoked cyclic nucleotide-gated (CNG) channel currents in the olfactory sensory neurons . Has calcium-dependent phospholipid scramblase activity; scrambles phosphatidylserine, phosphatidylcholine and galactosylceramide . Does not exhibit calcium-activated chloride channel (CaCC) activity . Can inhibit the activity of ANO1 .

APPLICATION

To ensure optimal assay performance, AREX recommends conducting reagent titration tailored to each testing system for optimal detection results.

WB	1:500 - 1:2000
IHC	1:50 - 1:200
IF/ICC	1:50 - 1:100

*Results are sample-specific. Please refer to your local assay conditions and test parameters for reference.

PRODUCT OVERVIEW

Description	Rabbit polyclonal antibody to TMEM16J
Specificity	Recognizes endogenous levels of TMEM16J protein.
Antibody Type	Primary antibody
Immunogen	KLH-conjugated synthetic peptide encompassing a sequence within the center region of human TMEM16J. The exact sequence is proprietary.
Purification	The antibody was purified by immunogen affinity chromatography.
Molecular Weight	Predicted: 90 kD; Observed: 90 kD
Form/Buffer	Liquid in 0.42% Potassium phosphate, 0.87% Sodium chloride, pH 7.3, 30% glycerol, and 0.01% sodium azide.
Alternative Names	PIG5; TMEM16J; TP53I5; Anoctamin-9; Transmembrane protein 16J; Tumor protein p53-inducible protein 5; p53-induced gene 5 protein
Gene Symbol	ANO9
Entrez Gene	338440(Human); 71345(Mouse)
SwissProt	A1A5B4(Human); P86044(Mouse)

*AREX continuously optimizes our products. Webpage content may not reflect the latest updates. For inquiries, please contact info@arexbio.com or your local distributor.

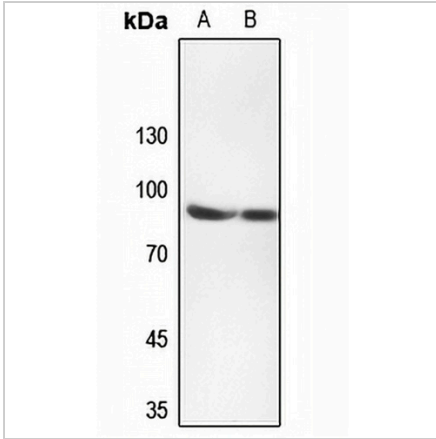
*Clone Number, Reactivity, Source/Host and Clonality can be found in the product name and Key Features section above.

DATASHEET

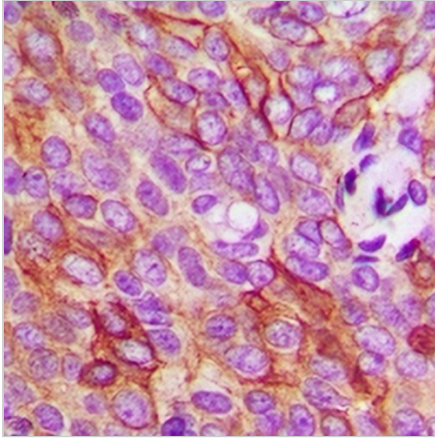
TMEM16J Rabbit Polyclonal Antibody

CAT. NO. APA10501

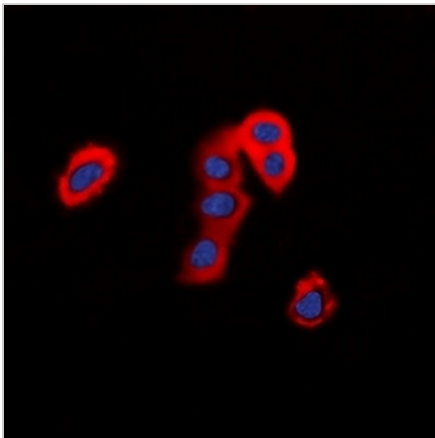
DATA



Western blot analysis of TMEM16J expression in mouse brain (A), mouse liver (B) whole cell lysates. (Predicted band size: 90 kD; Observed band size: 90 kD)



Immunohistochemical analysis of TMEM16J staining in human breast cancer formalin fixed paraffin embedded tissue section. The section was pre-treated using heat mediated antigen retrieval with sodium citrate buffer (pH 6.0). The section was then incubated with the antibody at room temperature and detected using an HRP conjugated compact polymer system. DAB was used as the chromogen. The section was then counterstained with haematoxylin and mounted with DPX.



Immunofluorescent analysis of TMEM16J staining in HepG2 cells. Formalin-fixed cells were permeabilized with 0.1% Triton X-100 in TBS for 5-10 minutes and blocked with 3% BSA-PBS for 30 minutes at room temperature. Cells were probed with the primary antibody in 3% BSA-PBS and incubated overnight at 4 °C in a humidified chamber. Cells were washed with PBST and incubated with a DyLight 594-conjugated secondary antibody (red) in PBS at room temperature in the dark. DAPI was used to stain the cell nuclei (blue).

STORAGE

Store at 4°C short term. For long term storage, store at -20°C, avoiding freeze/thaw cycles.

NOTE

For Research Use Only. Not for diagnostic, therapeutics, prophylactic or in vivo use.