

**DATASHEET**

**UBE2G1 Rabbit Polyclonal Antibody**

CAT. NO. APA10530

**KEY FEATURES**

Target	UBE2G1	Source / Host	Rabbit
Reactivity	Human, Mouse, Rat, Monkey	Clonality	Polyclonal
Applications	WB, IHC	Conjugation	Unconjugated
Form / Buffer	Liquid in 0.42% Potassium phosphate, 0.87% Sodium chloride, pH 7.3, 30% glycerol, and 0.01% sodium azide.		Storage at-20°C

**BACKGROUND**

Accepts ubiquitin from the E1 complex and catalyzes its covalent attachment to other proteins. In vitro catalyzes 'Lys-48', as well as 'Lys-63'-linked polyubiquitination. May be involved in degradation of muscle-specific proteins. Mediates polyubiquitination of CYP3A4.

**APPLICATION**

To ensure optimal assay performance, AREX recommends conducting reagent titration tailored to each testing system for optimal detection results.

WB	1:500 - 1:2000
IHC	1:50 - 1:200

\*Results are sample-specific. Please refer to your local assay conditions and test parameters for reference.

**PRODUCT OVERVIEW**

Description	Rabbit polyclonal antibody to UBE2G1
Specificity	Recognizes endogenous levels of UBE2G1 protein.
Antibody Type	Primary antibody
Immunogen	KLH-conjugated synthetic peptide encompassing a sequence within the center region of human UBE2G1. The exact sequence is proprietary.
Purification	The antibody was purified by immunogen affinity chromatography.
Molecular Weight	Predicted: 19 kD; Observed: 20 kD
Form/Buffer	Liquid in 0.42% Potassium phosphate, 0.87% Sodium chloride, pH 7.3, 30% glycerol, and 0.01% sodium azide.
Alternative Names	UBE2G; Ubiquitin-conjugating enzyme E2 G1; E217K; UBC7; Ubiquitin carrier protein G1; Ubiquitin-protein ligase G1
Gene Symbol	UBE2G1
Entrez Gene	7326(Human); 67128(Mouse); 64631(Rat)
SwissProt	P62253(Human); P62254(Mouse); P62255(Rat)

\*AREX continuously optimizes our products. Webpage content may not reflect the latest updates. For inquiries, please contact [info@arexbio.com](mailto:info@arexbio.com) or your local distributor.

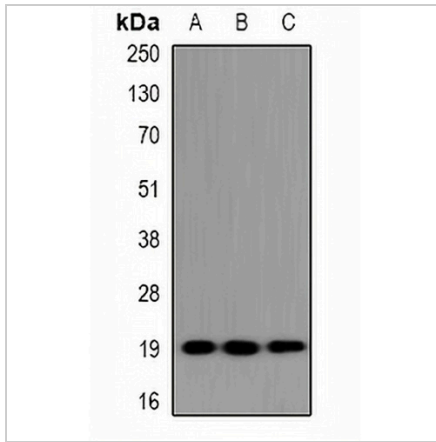
\*Clone Number, Reactivity, Source/Host and Clonality can be found in the product name and Key Features section above.

**DATASHEET**

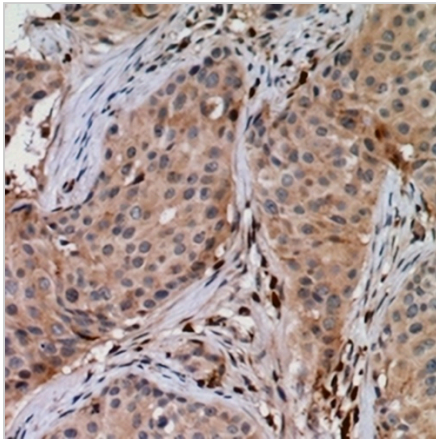
**UBE2G1 Rabbit Polyclonal Antibody**

CAT. NO. APA10530

**DATA**



Western blot analysis of UBE2G1 expression in HeLa (A), NIH3T3 (B), H9C2 (C) whole cell lysates. (Predicted band size: 19 kD; Observed band size: 20 kD)



Immunohistochemical analysis of UBE2G1 staining in human breast cancer formalin fixed paraffin embedded tissue section. The section was pre-treated using heat mediated antigen retrieval with sodium citrate buffer (pH 6.0). The section was then incubated with the antibody at room temperature and detected using an HRP conjugated compact polymer system. DAB was used as the chromogen. The section was then counterstained with haematoxylin and mounted with DPX.

**STORAGE**

Store at 4°C short term. For long term storage, store at -20°C, avoiding freeze/thaw cycles.

**NOTE**

For Research Use Only. Not for diagnostic, therapeutics, prophylactic or in vivo use.