

**DATASHEET**

**NIF1 Rabbit Polyclonal Antibody**

CAT. NO. APA10534

**KEY FEATURES**

Target	NIF1	Source / Host	Rabbit
Reactivity	Human, Mouse, Rat	Clonality	Polyclonal
Applications	WB	Conjugation	Unconjugated
Form / Buffer	Liquid in 0.42% Potassium phosphate, 0.87% Sodium chloride, pH 7.3, 30% glycerol, and 0.01% sodium azide.		Storage at-20°C

**BACKGROUND**

Component or associated component of some histone methyltransferase complexes may regulate transcription through recruitment of those complexes on gene promoters . Enhances ligand-dependent transcriptional activation by nuclear hormone receptors . Plays an important role in neural progenitor cell proliferation and self-renewal through the regulation of specific genes involved brain development, including REST . Also controls the expression of genes involved in somatic development and regulates, for instance, lymphoblast proliferation .

**APPLICATION**

To ensure optimal assay performance, AREX recommends conducting reagent titration tailored to each testing system for optimal detection results.

WB	1:500 - 1:2000
----	----------------

\*Results are sample-specific. Please refer to your local assay conditions and test parameters for reference.

**PRODUCT OVERVIEW**

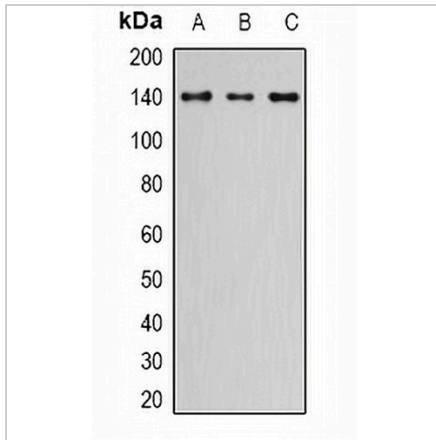
Description	Rabbit polyclonal antibody to NIF1
Specificity	Recognizes endogenous levels of NIF1 protein.
Antibody Type	Primary antibody
Immunogen	KLH-conjugated synthetic peptide encompassing a sequence within the center region of human NIF1. The exact sequence is proprietary.
Purification	The antibody was purified by immunogen affinity chromatography.
Molecular Weight	Predicted: 144 kD; Observed: 144 kD
Form/Buffer	Liquid in 0.42% Potassium phosphate, 0.87% Sodium chloride, pH 7.3, 30% glycerol, and 0.01% sodium azide.
Alternative Names	Zinc finger protein 335; NRC-interacting factor 1; NIF-1
Gene Symbol	ZNF335
Entrez Gene	63925(Human); 329559(Mouse); 259270(Rat)
SwissProt	Q9H4Z2(Human); A2A5K6(Mouse); G3V893(Rat)

\*AREX continuously optimizes our products. Webpage content may not reflect the latest updates. For inquiries, please contact [info@arexbio.com](mailto:info@arexbio.com) or your local distributor.

\*Clone Number, Reactivity, Source/Host and Clonality can be found in the product name and Key Features section above.

**DATASHEET****NIF1 Rabbit Polyclonal Antibody**

CAT. NO. APA10534

**DATA**

Western blot analysis of NIF1 expression in HEK293T (A), RAW264.7 (B), H9C2 (C) whole cell lysates. (Predicted band size: 144 kD; Observed band size: 144 kD)

**STORAGE**

Store at 4°C short term. For long term storage, store at -20°C, avoiding freeze/thaw cycles.

**NOTE**

For Research Use Only. Not for diagnostic, therapeutics, prophylactic or in vivo use.