

**DATASHEET**

**ZNT2 Rabbit Polyclonal Antibody**

CAT. NO. APA10536

**KEY FEATURES**

Target	ZNT2	Source / Host	Rabbit
Reactivity	Human, Mouse, Rat	Clonality	Polyclonal
Applications	WB, IHC, IF/ICC	Conjugation	Unconjugated
Form / Buffer	Liquid in 0.42% Potassium phosphate, 0.87% Sodium chloride, pH 7.3, 30% glycerol, and 0.01% sodium azide.		Storage at -20°C

**BACKGROUND**

Electroneutral proton-coupled antiporter concentrating zinc ions into a variety of intracellular organelles including endosomes, zymogen granules and mitochondria. Thereby, plays a crucial role in cellular zinc homeostasis to confer upon cells protection against its potential cytotoxicity . Regulates the zinc concentration of milk, through the transport of zinc ions into secretory vesicles of mammary cells . By concentrating zinc ions into lysosomes participates to lysosomal-mediated cell death during early mammary gland involution .

**APPLICATION**

To ensure optimal assay performance, AREX recommends conducting reagent titration tailored to each testing system for optimal detection results.

WB	1:500 - 1:2000
IHC	1:50 - 1:200
IF/ICC	1:50 - 1:200

\*Results are sample-specific. Please refer to your local assay conditions and test parameters for reference.

**PRODUCT OVERVIEW**

Description	Rabbit polyclonal antibody to ZNT2
Specificity	Recognizes endogenous levels of ZNT2 protein.
Antibody Type	Primary antibody
Immunogen	KLH-conjugated synthetic peptide encompassing a sequence within the center region of human ZNT2. The exact sequence is proprietary.
Purification	The antibody was purified by immunogen affinity chromatography.
Molecular Weight	Predicted: 35 kD; Observed: 40 kD
Form/Buffer	Liquid in 0.42% Potassium phosphate, 0.87% Sodium chloride, pH 7.3, 30% glycerol, and 0.01% sodium azide.
Alternative Names	ZNT2; Zinc transporter 2; ZnT-2; Solute carrier family 30 member 2
Gene Symbol	SLC30A2
Entrez Gene	7780(Human); 230810(Mouse); 25362(Rat)
SwissProt	Q9BRI3(Human); Q2HJ10(Mouse); Q62941(Rat)

\*AREX continuously optimizes our products. Webpage content may not reflect the latest updates. For inquiries, please contact [info@arexbio.com](mailto:info@arexbio.com) or your local distributor.

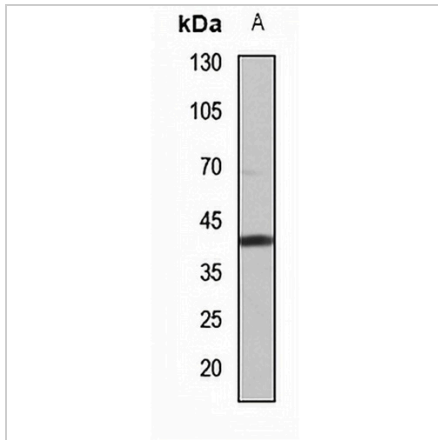
\*Clone Number, Reactivity, Source/Host and Clonality can be found in the product name and Key Features section above.

**DATASHEET**

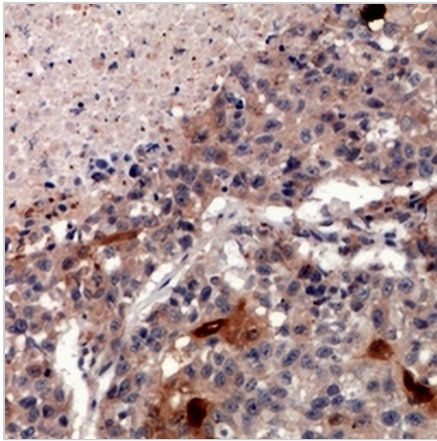
**ZNT2 Rabbit Polyclonal Antibody**

CAT. NO. APA10536

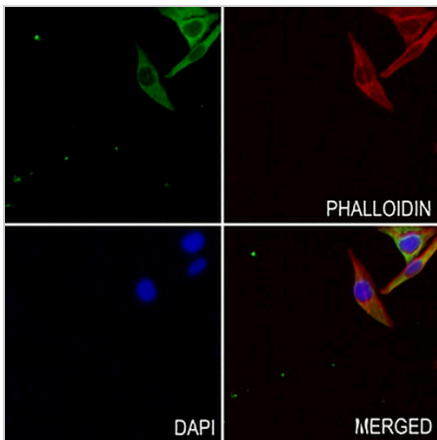
**DATA**



Western blot analysis of ZNT2 expression in rat kidney (A) whole cell lysates. (Predicted band size: 35 kD; Observed band size: 40 kD)



Immunohistochemical analysis of ZNT2 staining in human lung cancer formalin fixed paraffin embedded tissue section. The section was pre-treated using heat mediated antigen retrieval with sodium citrate buffer (pH 6.0). The section was then incubated with the antibody at room temperature and detected using an HRP conjugated compact polymer system. DAB was used as the chromogen. The section was then counterstained with haematoxylin and mounted with DPX.



Immunofluorescent analysis of ZNT2 staining in MCF7 cells. Formalin-fixed cells were permeabilized with 0.1% Triton X-100 in TBS for 5-10 minutes and blocked with 3% BSA-PBS for 30 minutes at room temperature. Cells were probed with the primary antibody in 3% BSA-PBS and incubated overnight at 4 °C in a hidified chamber. Cells were washed with PBST and incubated with a AREX® Fluor 488 -conjugated secondary antibody (green) in PBS at room temperature in the dark. Phalloidin - AREX® Fluor 594 was used to stain Actin filaments (red). DAPI was used to stain the cell nuclei (blue).

**STORAGE**

Store at 4°C short term. For long term storage, store at -20°C, avoiding freeze/thaw cycles.

**NOTE**

For Research Use Only. Not for diagnostic, therapeutics, prophylactic or in vivo use.