

DATASHEET

VSIG2 Rabbit Polyclonal Antibody

CAT. NO. APA10539

KEY FEATURES

Target	VSIG2	Source / Host	Rabbit
Reactivity	Human, Mouse, Rat	Clonality	Polyclonal
Applications	WB	Conjugation	Unconjugated
Form / Buffer	Liquid in 0.42% Potassium phosphate, 0.87% Sodium chloride, pH 7.3, 30% glycerol, and 0.01% sodium azide.		Storage at -20°C

BACKGROUND

V-set and immunoglobulin domain-containing protein 2 (VSIG2), also known as Cortical thymocyte-like protein, CT-like protein. Subcellular location: Membrane Tissue specificity: Highly expressed in stomach, colon, prostate, trachea and thyroid glands and weakly in bladder and lung

APPLICATION

To ensure optimal assay performance, AREX recommends conducting reagent titration tailored to each testing system for optimal detection results.

WB	1:500 - 1:2000
----	----------------

*Results are sample-specific. Please refer to your local assay conditions and test parameters for reference.

PRODUCT OVERVIEW

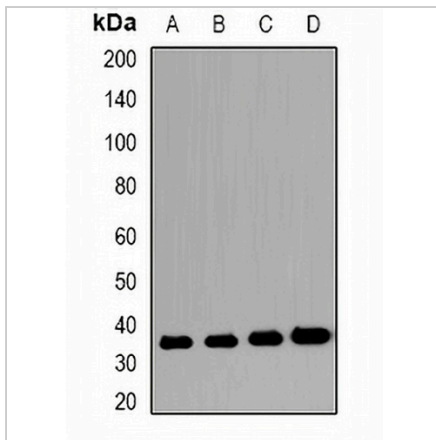
Description	Rabbit polyclonal antibody to VSIG2
Specificity	Recognizes endogenous levels of VSIG2 protein.
Antibody Type	Primary antibody
Immunogen	KLH-conjugated synthetic peptide encompassing a sequence within the center region of human VSIG2. The exact sequence is proprietary.
Purification	The antibody was purified by immunogen affinity chromatography.
Molecular Weight	Predicted: 34 kD; Observed: 34 kD
Form/Buffer	Liquid in 0.42% Potassium phosphate, 0.87% Sodium chloride, pH 7.3, 30% glycerol, and 0.01% sodium azide.
Alternative Names	CTH; CTXL; V-set and immunoglobulin domain-containing protein 2; Cortical thymocyte-like protein; CT-like protein
Gene Symbol	VSIG2
Entrez Gene	23584(Human); 57276(Mouse)
SwissProt	Q96IQ7(Human); Q9Z109(Mouse)

*AREX continuously optimizes our products. Webpage content may not reflect the latest updates. For inquiries, please contact info@arexbio.com or your local distributor.

*Clone Number, Reactivity, Source/Host and Clonality can be found in the product name and Key Features section above.

DATASHEET**VSIG2 Rabbit Polyclonal Antibody**

CAT. NO. APA10539

DATA

Western blot analysis of VSIG2 expression in LDL (A), PC3 (B), mouse stomach (C), rat stomach (D) whole cell lysates. (Predicted band size: 34 kD; Observed band size: 34 kD)

STORAGE

Store at 4°C short term. For long term storage, store at -20°C, avoiding freeze/thaw cycles.

NOTE

For Research Use Only. Not for diagnostic, therapeutics, prophylactic or in vivo use.