

DATASHEET

MEF2A (Acetyl-K403) Rabbit Polyclonal Antibody

CAT. NO. APA10551

KEY FEATURES

Target	MEF2A (Acetyl-K403)	Source / Host	Rabbit
Reactivity	Human, Mouse, Rat	Clonality	Polyclonal
Applications	WB	Conjugation	Unconjugated
Form / Buffer	Liquid in 0.42% Potassium phosphate, 0.87% Sodium chloride, pH 7.3, 30% glycerol, and 0.01% sodium azide.	Storage	at-20°C

BACKGROUND

Transcriptional activator which binds specifically to the MEF2 element, 5'-YTA[AT](4)TAR-3', found in numerous muscle-specific genes. Also involved in the activation of numerous growth factor- and stress-induced genes. Mediates cellular functions not only in skeletal and cardiac muscle development, but also in neuronal differentiation and survival. Plays diverse roles in the control of cell growth, survival and apoptosis via p38 MAPK signaling in muscle-specific and/or growth factor-related transcription. In cerebellar granule neurons, phosphorylated and sumoylated MEF2A represses transcription of NUR77 promoting synaptic differentiation. Associates with chromatin to the ZNF16 promoter.

APPLICATION

To ensure optimal assay performance, AREX recommends conducting reagent titration tailored to each testing system for optimal detection results.

WB	1:500 - 1:2000
----	----------------

*Results are sample-specific. Please refer to your local assay conditions and test parameters for reference.

PRODUCT OVERVIEW

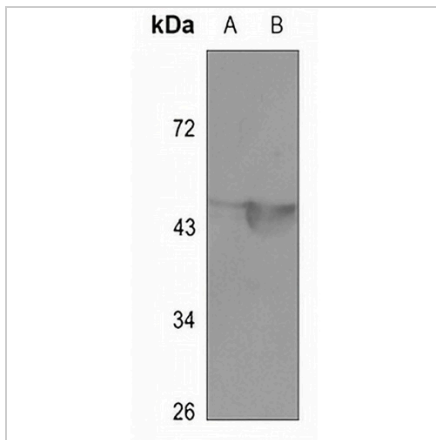
Description	Rabbit polyclonal antibody to MEF2A (Acetyl-K403)
Specificity	Recognizes endogenous levels of MEF2A protein only when acetylated at K403.
Antibody Type	Primary antibody
Immunogen	KLH-conjugated synthetic acetylated peptide corresponding to residues surrounding K403 of human MEF2A protein. The exact sequence is proprietary.
Purification	The antibody was purified by immunogen affinity chromatography.
Molecular Weight	Predicted: 54 kD; Observed: 53 kD
Form/Buffer	Liquid in 0.42% Potassium phosphate, 0.87% Sodium chloride, pH 7.3, 30% glycerol, and 0.01% sodium azide.
Alternative Names	MEF2; Myocyte-specific enhancer factor 2A; Serum response factor-like protein 1
Gene Symbol	MEF2A
Entrez Gene	4205(Human); 17258(Mouse); 309957(Rat)
SwissProt	Q02078(Human); Q60929(Mouse); Q2MJT0(Rat)

*AREX continuously optimizes our products. Webpage content may not reflect the latest updates. For inquiries, please contact info@arexbio.com or your local distributor.

*Clone Number, Reactivity, Source/Host and Clonality can be found in the product name and Key Features section above.

DATASHEET**MEF2A (Acetyl-K403) Rabbit Polyclonal Antibody**

CAT. NO. APA10551

DATA

Western blot analysis of MEF2A (Acetyl-K403) expression in mouse brain (A), mouse muscle (B) whole cell lysates. (Predicted band size: 54 kD; Observed band size: 53 kD)

STORAGE

Store at 4°C short term. For long term storage, store at -20°C, avoiding freeze/thaw cycles.

NOTE

For Research Use Only. Not for diagnostic, therapeutics, prophylactic or in vivo use.