

DATASHEET

Myosin-pan (Acetyl-K505) Rabbit Polyclonal Antibody

CAT. NO. APA10553

KEY FEATURES

Target	Myosin-pan (Acetyl-K505)	Source / Host	Rabbit
Reactivity	Human, Mouse, Rat, Bovine, Bovine, Dog, Pig	Clonality	Polyclonal
Applications	WB	Conjugation	Unconjugated
Form / Buffer	Liquid in 0.42% Potassium phosphate, 0.87% Sodium chloride, pH 7.3, 30% glycerol, and 0.01% sodium azide.		Storage at -20°C

BACKGROUND

Required for normal hearing. It plays a role in cochlear amplification of auditory stimuli, likely through the positive regulation of prestin (SLC26A5) activity and outer hair cell (OHC) electromotility.

APPLICATION

To ensure optimal assay performance, AREX recommends conducting reagent titration tailored to each testing system for optimal detection results.

WB	1:500 - 1:2000
----	----------------

*Results are sample-specific. Please refer to your local assay conditions and test parameters for reference.

PRODUCT OVERVIEW

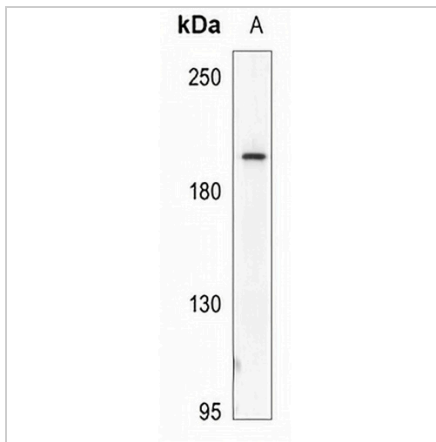
Description	Rabbit polyclonal antibody to Myosin-pan (Acetyl-K505)
Specificity	Recognizes endogenous levels of Myosin-pan protein only when acetylated at K505.
Antibody Type	Primary antibody
Immunogen	KLH-conjugated synthetic acetylated peptide corresponding to residues surrounding K505 of human Myosin-pan protein. The exact sequence is proprietary.
Purification	The antibody was purified by immunogen affinity chromatography.
Molecular Weight	Predicted: 223 kD; Observed: 223 kD
Form/Buffer	Liquid in 0.42% Potassium phosphate, 0.87% Sodium chloride, pH 7.3, 30% glycerol, and 0.01% sodium azide.
Alternative Names	MYH1; Myosin-1; Myosin heavy chain 1; Myosin heavy chain 2x; MyHC-2x; Myosin heavy chain IIX/d; MyHC-IIX/d; Myosin heavy chain, skeletal muscle, adult 1; MYH2; MYHSA2; Myosin-2; Myosin heavy chain 2; Myosin heavy chain 2a; MyHC-2a; Myosin heavy chain IIA; MyHC-IIa; Myosin heavy chain, skeletal muscle, adult 2; MYH3; Myosin-3; Muscle embryonic myosin heavy chain; Myosin heavy chain 3; Myosin heavy chain, fast skeletal muscle, embryonic; SMHCE; MYH4; Myosin-4; Myosin heavy chain 2b; MyHC-2b; Myosin heavy chain 4; Myosin heavy chain IIB; MyHC-IIB; Myosin heavy chain, skeletal muscle, fetal; MYH6; MYHCA; Myosin-6; Myosin heavy chain 6; Myosin heavy chain, cardiac muscle alpha isoform; MyHC-alpha; MYH7; MYHCB; Myosin-7; Myosin heavy chain 7; Myosin heavy chain slow isoform; MyHC-slow; Myosin heavy chain, cardiac muscle beta isoform; MyHC-beta; MYH8; Myosin-8; Myosin heavy chain 8; Myosin heavy chain, skeletal muscle, perinatal; MyHC-perinatal
Gene Symbol	MYH1; MYH2; MYH3; PTPRJ; MYH6; MYH7; MYH8
Entrez Gene	4619; 4620; 4621; 5795; 4624; 4625; 4626(Human); 17879; 17883; 17884(Mouse); 24583; 360543(Rat)
SwissProt	P12882; Q9UKX2; P11055; Q9Y623; P13533; P12883; P13535(Human); Q5SX40; P13541; Q5SX39(Mouse); P12847; Q29RW1(Rat)

*AREX continuously optimizes our products. Webpage content may not reflect the latest updates. For inquiries, please contact info@arex.bio or your local distributor.

*Clone Number, Reactivity, Source/Host and Clonality can be found in the product name and Key Features section above.

DATASHEET**Myosin-pan (Acetyl-K505) Rabbit Polyclonal Antibody**

CAT. NO. APA10553

DATA

Western blot analysis of Myosin-pan (Acetyl-K505) expression in rat kidney (A) whole cell lysates. (Predicted band size: 223 kD; Observed band size: 223 kD)

STORAGE

Store at 4°C short term. For long term storage, store at -20°C, avoiding freeze/thaw cycles.

NOTE

For Research Use Only. Not for diagnostic, therapeutics, prophylactic or in vivo use.