

DATASHEET

Beta-tubulin (Acetyl-K379) Rabbit Polyclonal Antibody

CAT. NO. APA10556

KEY FEATURES

Target	Beta-tubulin (Acetyl-K379)	Source / Host	Rabbit
Reactivity	Human, Mouse, Rat, Bovine, Chicken, Pig	Clonality	Polyclonal
Applications	WB	Conjugation	Unconjugated
Form / Buffer	Liquid in 0.42% Potassium phosphate, 0.87% Sodium chloride, pH 7.3, 30% glycerol, and 0.01% sodium azide.		Storage at -20°C

BACKGROUND

Tubulin is the major constituent of microtubules, a cylinder consisting of laterally associated linear protofilaments composed of alpha- and beta-tubulin heterodimers. Microtubules grow by the addition of GTP-tubulin dimers to the microtubule end, where a stabilizing cap forms. Below the cap, tubulin dimers are in GDP-bound state, owing to GTPase activity of alpha-tubulin.

APPLICATION

To ensure optimal assay performance, AREX recommends conducting reagent titration tailored to each testing system for optimal detection results.

WB	1:500 - 1:2000
----	----------------

*Results are sample-specific. Please refer to your local assay conditions and test parameters for reference.

PRODUCT OVERVIEW

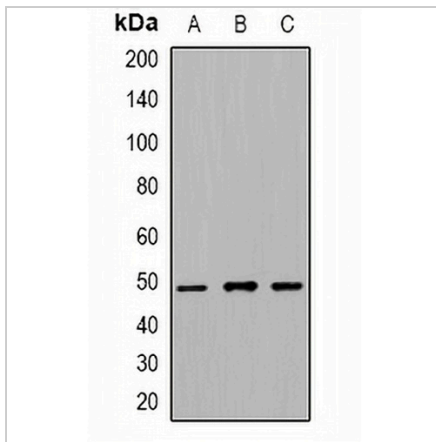
Description	Rabbit polyclonal antibody to Beta-tubulin (Acetyl-K379)
Specificity	Recognizes endogenous levels of Beta-tubulin protein only when acetylated at K379.
Antibody Type	Primary antibody
Immunogen	KLH-conjugated synthetic acetylated peptide corresponding to residues surrounding K379 of human Beta-tubulin protein. The exact sequence is proprietary.
Purification	The antibody was purified by immunogen affinity chromatography.
Molecular Weight	Predicted: 49 kD; Observed: 49 kD
Form/Buffer	Liquid in 0.42% Potassium phosphate, 0.87% Sodium chloride, pH 7.3, 30% glycerol, and 0.01% sodium azide.
Alternative Names	TUBB2A; TUBB2; Tubulin beta-2A chain; TUBB2B; Tubulin beta-2B chain; TUBB3; TUBB4; Tubulin beta-3 chain; Tubulin beta-4 chain; Tubulin beta-III; TUBB4A; TUBB4; TUBB5; Tubulin beta-4A chain; Tubulin 5 beta; Tubulin beta-4 chain; TUBB4B; TUBB2C; Tubulin beta-4B chain; Tubulin beta-2 chain; Tubulin beta-2C chain; TUBB; TUBB5; OK/SW-cl.56; Tubulin beta chain; Tubulin beta-5 chain; TUBB6; Tubulin beta-6 chain
Gene Symbol	TUBB2A; TUBB2B; TUBB3; TUBB4A; TUBB4B; TUBB; TUBB6
Entrez Gene	7280; 347733; 10381; 10382; 10383; 203068; 84617(Human); 22151; 73710; 22152; 22153(Mouse); 498736; 291081; 246118(Rat)
SwissProt	Q13885; Q9BVA1; Q13509; P04350; P68371; P07437; Q9BUF5; (Human); Q7TMM9; Q9CWF2; Q9ERD7; Q9D6F9(Mouse); P85108; Q3KRE8; Q4QRB4(Rat)

*AREX continuously optimizes our products. Webpage content may not reflect the latest updates. For inquiries, please contact info@arexbio.com or your local distributor.

*Clone Number, Reactivity, Source/Host and Clonality can be found in the product name and Key Features section above.

DATASHEET**Beta-tubulin (Acetyl-K379) Rabbit Polyclonal Antibody**

CAT. NO. APA10556

DATA

Western blot analysis of Beta-tubulin (Acetyl-K379) expression in HeLa (A), NIH3T3 (B), PC12 (C) whole cell lysates. (Predicted band size: 49 kD; Observed band size: 49 kD)

STORAGE

Store at 4°C short term. For long term storage, store at -20°C, avoiding freeze/thaw cycles.

NOTE

For Research Use Only. Not for diagnostic, therapeutics, prophylactic or in vivo use.