

DATASHEET

GLI1 Rabbit Polyclonal Antibody

CAT. NO. APA10565

KEY FEATURES

Target	GLI1	Source / Host	Rabbit
Reactivity	Human, Mouse, Rat	Clonality	Polyclonal
Applications	WB	Conjugation	Unconjugated
Form / Buffer	Liquid in 0.42% Potassium phosphate, 0.87% Sodium chloride, pH 7.3, 30% glycerol, and 0.01% sodium azide.		Storage at -20°C

BACKGROUND

Acts as a transcriptional activator . Binds to the DNA consensus sequence 5'-GACCACCCA-3' . Regulates the transcription of specific genes during normal development . Plays a role in craniofacial development and digital development, as well as development of the central nervous system and gastrointestinal tract. Mediates SHH signaling . Plays a role in cell proliferation and differentiation via its role in SHH signaling .

APPLICATION

To ensure optimal assay performance, AREX recommends conducting reagent titration tailored to each testing system for optimal detection results.

WB	1:500 - 1:2000
----	----------------

*Results are sample-specific. Please refer to your local assay conditions and test parameters for reference.

PRODUCT OVERVIEW

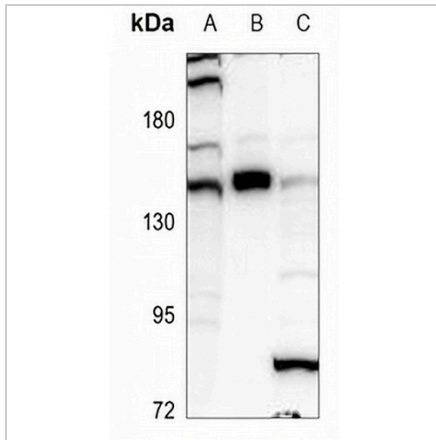
Description	Rabbit polyclonal antibody to GLI1
Specificity	Recognizes endogenous levels of GLI1 protein.
Antibody Type	Primary antibody
Immunogen	KLH-conjugated synthetic peptide encompassing a sequence within the center region of human GLI1. The exact sequence is proprietary.
Purification	The antibody was purified by immunogen affinity chromatography.
Molecular Weight	Predicted: 117 kD; Observed: 140 kD
Form/Buffer	Liquid in 0.42% Potassium phosphate, 0.87% Sodium chloride, pH 7.3, 30% glycerol, and 0.01% sodium azide.
Alternative Names	GLI; Zinc finger protein GLI1; Glioma-associated oncogene; Oncogene GLI
Gene Symbol	GLI1
Entrez Gene	2735(Human); 14632(Mouse)
SwissProt	P08151(Human); P47806(Mouse)

*AREX continuously optimizes our products. Webpage content may not reflect the latest updates. For inquiries, please contact info@arexbio.com or your local distributor.

*Clone Number, Reactivity, Source/Host and Clonality can be found in the product name and Key Features section above.

DATASHEET**GLI1 Rabbit Polyclonal Antibody**

CAT. NO. APA10565

DATA

Western blot analysis of GLI1 expression in HeLa (A), mouse brain (B), A549 (C) whole cell lysates. (Predicted band size: 117 kD; Observed band size: 140 kD)

STORAGE

Store at 4°C short term. For long term storage, store at -20°C, avoiding freeze/thaw cycles.

NOTE

For Research Use Only. Not for diagnostic, therapeutics, prophylactic or in vivo use.