

DATASHEET

RBM26 Rabbit Polyclonal Antibody

CAT. NO. APA10575

KEY FEATURES

Target	RBM26	Source / Host	Rabbit
Reactivity	Human, Mouse, Rat	Clonality	Polyclonal
Applications	WB	Conjugation	Unconjugated
Form / Buffer	Liquid in 0.42% Potassium phosphate, 0.87% Sodium chloride, pH 7.3, 30% glycerol, and 0.01% sodium azide.		Storage at -20°C

BACKGROUND

May be involved in the turnover of nuclear polyadenylated (pA+) RNA.

APPLICATION

To ensure optimal assay performance, AREX recommends conducting reagent titration tailored to each testing system for optimal detection results.

WB	1:500 - 1:2000
----	----------------

*Results are sample-specific. Please refer to your local assay conditions and test parameters for reference.

PRODUCT OVERVIEW

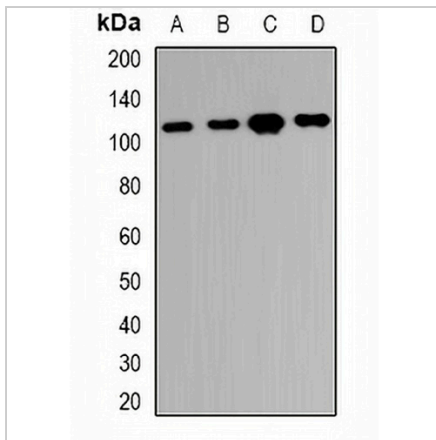
Description	Rabbit polyclonal antibody to RBM26
Specificity	Recognizes endogenous levels of RBM26 protein.
Antibody Type	Primary antibody
Immunogen	KLH-conjugated synthetic peptide encompassing a sequence within the center region of human RBM26. The exact sequence is proprietary.
Purification	The antibody was purified by immunogen affinity chromatography.
Molecular Weight	Predicted: 113 kD; Observed: 113 kD
Form/Buffer	Liquid in 0.42% Potassium phosphate, 0.87% Sodium chloride, pH 7.3, 30% glycerol, and 0.01% sodium azide.
Alternative Names	C13orf10; RNA-binding protein 26; CTCL tumor antigen se70-2; RNA-binding motif protein 26
Gene Symbol	RBM26
Entrez Gene	64062(Human); 74213(Mouse)
SwissProt	Q5T8P6(Human); Q6NZN0(Mouse)

*AREX continuously optimizes our products. Webpage content may not reflect the latest updates. For inquiries, please contact info@arexbio.com or your local distributor.

*Clone Number, Reactivity, Source/Host and Clonality can be found in the product name and Key Features section above.

DATASHEET**RBM26 Rabbit Polyclonal Antibody**

CAT. NO. APA10575

DATA

Western blot analysis of RBM26 expression in HeLa (A), Jurkat (B), SP20 (C), H9C2 (D) whole cell lysates. (Predicted band size: 113 kD; Observed band size: 113 kD)

STORAGE

Store at 4°C short term. For long term storage, store at -20°C, avoiding freeze/thaw cycles.

NOTE

For Research Use Only. Not for diagnostic, therapeutics, prophylactic or in vivo use.