

**DATASHEET**
**ABCF1 Rabbit Polyclonal Antibody**
**CAT. NO. APA10577**
**KEY FEATURES**

Target	ABCF1	Source / Host	Rabbit
Reactivity	Human, Mouse, Rat, Zebrafish	Clonality	Polyclonal
Applications	WB	Conjugation	Unconjugated
Form / Buffer	Liquid in 0.42% Potassium phosphate, 0.87% Sodium chloride, pH 7.3, 30% glycerol, and 0.01% sodium azide.	Storage	at-20°C

**BACKGROUND**

Isoform 2 is required for efficient Cap- and IRES-mediated mRNA translation initiation. Isoform 2 is not involved in the ribosome biogenesis.

**APPLICATION**

To ensure optimal assay performance, AREX recommends conducting reagent titration tailored to each testing system for optimal detection results.

WB	1:500 - 1:2000
----	----------------

\*Results are sample-specific. Please refer to your local assay conditions and test parameters for reference.

**PRODUCT OVERVIEW**

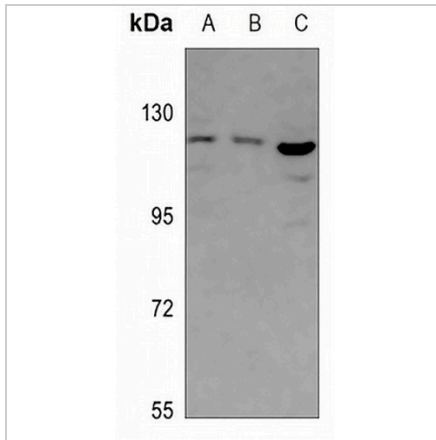
Description	Rabbit polyclonal antibody to ABCF1
Specificity	Recognizes endogenous levels of ABCF1 protein.
Antibody Type	Primary antibody
Immunogen	KLH-conjugated synthetic peptide encompassing a sequence within the C-term region of human ABCF1. The exact sequence is proprietary.
Purification	The antibody was purified by immunogen affinity chromatography.
Molecular Weight	Predicted: 95 kD; Observed: 120 kD
Form/Buffer	Liquid in 0.42% Potassium phosphate, 0.87% Sodium chloride, pH 7.3, 30% glycerol, and 0.01% sodium azide.
Alternative Names	ABC50; ATP-binding cassette sub-family F member 1; ATP-binding cassette 50; TNF-alpha-stimulated ABC protein
Gene Symbol	ABCF1
Entrez Gene	23(Human); 224742(Mouse); 85493(Rat)
SwissProt	Q8NE71(Human); Q6P542(Mouse); Q6MG08(Rat)

\*AREX continuously optimizes our products. Webpage content may not reflect the latest updates. For inquiries, please contact [info@arexbio.com](mailto:info@arexbio.com) or your local distributor.

\*Clone Number, Reactivity, Source/Host and Clonality can be found in the product name and Key Features section above.

**DATASHEET****ABCF1 Rabbit Polyclonal Antibody**

CAT. NO. APA10577

**DATA**

Western blot analysis of ABCF1 expression in DLD (A), U2OS (B), MCF7 (C) whole cell lysates. (Predicted band size: 95 kD; Observed band size: 120 kD)

**STORAGE**

Store at 4°C short term. For long term storage, store at -20°C, avoiding freeze/thaw cycles.

**NOTE**

For Research Use Only. Not for diagnostic, therapeutics, prophylactic or in vivo use.