

## DATASHEET

# SCP2 Rabbit Polyclonal Antibody

CAT. NO. APA10598

### KEY FEATURES

|               |                                                                                                           |               |                     |
|---------------|-----------------------------------------------------------------------------------------------------------|---------------|---------------------|
| Target        | SCP2                                                                                                      | Source / Host | Rabbit              |
| Reactivity    | Human                                                                                                     | Clonality     | Polyclonal          |
| Applications  | WB, IF/ICC                                                                                                | Conjugation   | Unconjugated        |
| Form / Buffer | Liquid in 0.42% Potassium phosphate, 0.87% Sodium chloride, pH 7.3, 30% glycerol, and 0.01% sodium azide. |               | Storage<br>at -20°C |

### BACKGROUND

Major component of the axial/lateral elements of synaptonemal complexes (SCS) during meiotic prophase. Plays a role in the assembly of synaptonemal complexes. Required for normal meiotic chromosome synapsis during oocyte and spermatocyte development and for normal male and female fertility. Required for insertion of SYCP3 into synaptonemal complexes. May be involved in the organization of chromatin by temporarily binding to DNA scaffold attachment regions. Requires SYCP3, but not SYCP1, in order to be incorporated into the axial/lateral elements.

### APPLICATION

To ensure optimal assay performance, AREX recommends conducting reagent titration tailored to each testing system for optimal detection results.

|        |                |
|--------|----------------|
| WB     | 1:500 - 1:2000 |
| IF/ICC | 1:50 - 1:200   |

\*Results are sample-specific. Please refer to your local assay conditions and test parameters for reference.

### PRODUCT OVERVIEW

|                   |                                                                                                                                     |
|-------------------|-------------------------------------------------------------------------------------------------------------------------------------|
| Description       | Rabbit polyclonal antibody to SCP2                                                                                                  |
| Specificity       | Recognizes endogenous levels of SCP2 protein.                                                                                       |
| Antibody Type     | Primary antibody                                                                                                                    |
| Immunogen         | KLH-conjugated synthetic peptide encompassing a sequence within the center region of human SCP2. The exact sequence is proprietary. |
| Purification      | The antibody was purified by immunogen affinity chromatography.                                                                     |
| Molecular Weight  | Predicted: 175 kD; Observed: 175 kD                                                                                                 |
| Form/Buffer       | Liquid in 0.42% Potassium phosphate, 0.87% Sodium chloride, pH 7.3, 30% glycerol, and 0.01% sodium azide.                           |
| Alternative Names | SCP2; Synaptonemal complex protein 2; SCP-2; Synaptonemal complex lateral element protein; hsSCP2                                   |
| Gene Symbol       | SYCP2                                                                                                                               |
| Entrez Gene       | 10388(Human)                                                                                                                        |
| SwissProt         | Q9BX26(Human)                                                                                                                       |

\*AREX continuously optimizes our products. Webpage content may not reflect the latest updates. For inquiries, please contact [info@arexbio.com](mailto:info@arexbio.com) or your local distributor.

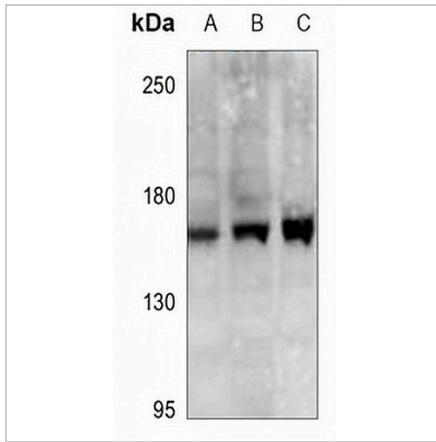
\*Clone Number, Reactivity, Source/Host and Clonality can be found in the product name and Key Features section above.

**DATASHEET**

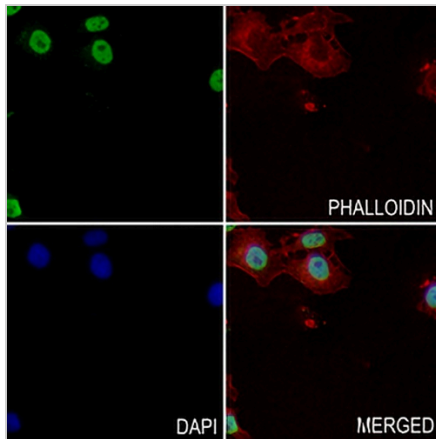
**SCP2 Rabbit Polyclonal Antibody**

CAT. NO. APA10598

**DATA**



Western blot analysis of SCP2 expression in HEK293T (A), H1792 (B), SGC7901 (C) whole cell lysates. (Predicted band size: 175 kD; Observed band size: 175 kD)



Immunofluorescent analysis of SCP2 staining in HepG2 cells. Formalin-fixed cells were permeabilized with 0.1% Triton X-100 in TBS for 5-10 minutes and blocked with 3% BSA-PBS for 30 minutes at room temperature. Cells were probed with the primary antibody in 3% BSA-PBS and incubated overnight at 4 °C in a humidified chamber. Cells were washed with PBST and incubated with a AREX® Fluor 488 -conjugated secondary antibody (green) in PBS at room temperature in the dark. Phalloidin - AREX® Fluor 594 was used to stain Actin filaments (red). DAPI was used to stain the cell nuclei (blue).

**STORAGE**

Store at 4°C short term. For long term storage, store at -20°C, avoiding freeze/thaw cycles.

**NOTE**

For Research Use Only. Not for diagnostic, therapeutics, prophylactic or in vivo use.