

**DATASHEET**

**SCP3 Rabbit Polyclonal Antibody**

CAT. NO. APA10599

**KEY FEATURES**

Target	SCP3	Source / Host	Rabbit
Reactivity	Human, Mouse, Rat, Bovine, Monkey	Clonality	Polyclonal
Applications	WB	Conjugation	Unconjugated
Form / Buffer	Liquid in 0.42% Potassium phosphate, 0.87% Sodium chloride, pH 7.3, 30% glycerol, and 0.01% sodium azide.		Storage at -20°C

**BACKGROUND**

Component of the synaptonemal complexes (SCS), formed between homologous chromosomes during meiotic prophase. Required for centromere pairing during meiosis in male germ cells . Required for normal meiosis during spermatogenesis and male fertility , formed between homologous chromosomes during meiotic prophase. Required for centromere pairing during meiosis in male germ cells . Required for normal meiosis during spermatogenesis and male fertility . Plays a lesser role in female fertility. Required for efficient phosphorylation of HORMAD1 and HORMAD2 .

**APPLICATION**

To ensure optimal assay performance, AREX recommends conducting reagent titration tailored to each testing system for optimal detection results.

WB	1:500 - 1:2000
----	----------------

\*Results are sample-specific. Please refer to your local assay conditions and test parameters for reference.

**PRODUCT OVERVIEW**

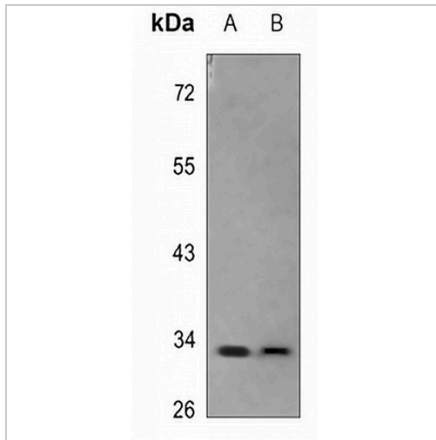
Description	Rabbit polyclonal antibody to SCP3
Specificity	Recognizes endogenous levels of SCP3 protein.
Antibody Type	Primary antibody
Immunogen	KLH-conjugated synthetic peptide encompassing a sequence within the center region of human SCP3. The exact sequence is proprietary.
Purification	The antibody was purified by immunogen affinity chromatography.
Molecular Weight	Predicted: 27 kD; Observed: 33 kD
Form/Buffer	Liquid in 0.42% Potassium phosphate, 0.87% Sodium chloride, pH 7.3, 30% glycerol, and 0.01% sodium azide.
Alternative Names	SCP3; Synaptonemal complex protein 3; SCP-3
Gene Symbol	SYCP3
Entrez Gene	50511(Human); 20962(Mouse); 25561(Rat)
SwissProt	Q8IZU3(Human); P70281(Mouse); Q63520(Rat)

\*AREX continuously optimizes our products. Webpage content may not reflect the latest updates. For inquiries, please contact [info@arexbio.com](mailto:info@arexbio.com) or your local distributor.

\*Clone Number, Reactivity, Source/Host and Clonality can be found in the product name and Key Features section above.

**DATASHEET****SCP3 Rabbit Polyclonal Antibody**

CAT. NO. APA10599

**DATA**

Western blot analysis of SCP3 expression in mouse brain (A), rat brain (B) whole cell lysates. (Predicted band size: 27 kD; Observed band size: 33 kD)

**STORAGE**

Store at 4°C short term. For long term storage, store at -20°C, avoiding freeze/thaw cycles.

**NOTE**

For Research Use Only. Not for diagnostic, therapeutics, prophylactic or in vivo use.