

**DATASHEET**

**Claudin 17 Rabbit Polyclonal Antibody**

CAT. NO. APA10603

**KEY FEATURES**

Target	Claudin 17	Source / Host	Rabbit
Reactivity	Human, Mouse, Rat	Clonality	Polyclonal
Applications	WB	Conjugation	Unconjugated
Form / Buffer	Liquid in 0.42% Potassium phosphate, 0.87% Sodium chloride, pH 7.3, 30% glycerol, and 0.01% sodium azide.		Storage at -20°C

**BACKGROUND**

Channel-forming tight junction protein with selectivity for anions, including chloride and hydrogencarbonate, and for solutes smaller than 9 Angstrom in diameter. In the kidney proximal tubule, may be involved in paracellular reabsorption of filtered anions. Does not affect water permeability.

**APPLICATION**

To ensure optimal assay performance, AREX recommends conducting reagent titration tailored to each testing system for optimal detection results.

WB	1:500 - 1:2000
----	----------------

\*Results are sample-specific. Please refer to your local assay conditions and test parameters for reference.

**PRODUCT OVERVIEW**

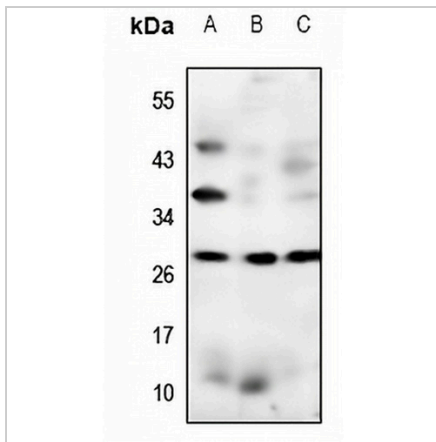
Description	Rabbit polyclonal antibody to Claudin 17
Specificity	Recognizes endogenous levels of Claudin 17 protein.
Antibody Type	Primary antibody
Immunogen	KLH-conjugated synthetic peptide encompassing a sequence within the C-term region of human Claudin 17. The exact sequence is proprietary.
Purification	The antibody was purified by immunogen affinity chromatography.
Molecular Weight	Predicted: 24 kD; Observed: 26 kD
Form/Buffer	Liquid in 0.42% Potassium phosphate, 0.87% Sodium chloride, pH 7.3, 30% glycerol, and 0.01% sodium azide.
Alternative Names	Claudin-17
Gene Symbol	CLDN17
Entrez Gene	26285(Human); 239931(Mouse)
SwissProt	P56750(Human); Q8BXA6(Mouse)

\*AREX continuously optimizes our products. Webpage content may not reflect the latest updates. For inquiries, please contact [info@arexbio.com](mailto:info@arexbio.com) or your local distributor.

\*Clone Number, Reactivity, Source/Host and Clonality can be found in the product name and Key Features section above.

**DATASHEET****Claudin 17 Rabbit Polyclonal Antibody**

CAT. NO. APA10603

**DATA**

Western blot analysis of Claudin 17 expression in KEK293T (A), PC12 (B), MEF (C) whole cell lysates. (Predicted band size: 24 kD; Observed band size: 26 kD)

**STORAGE**

Store at 4°C short term. For long term storage, store at -20°C, avoiding freeze/thaw cycles.

**NOTE**

For Research Use Only. Not for diagnostic, therapeutics, prophylactic or in vivo use.