

DATASHEET

CD144 (Phospho-Y731) Rabbit Polyclonal Antibody

CAT. NO. APA10619

KEY FEATURES

Target	CD144 (Phospho-Y731)	Source / Host	Rabbit
Reactivity	Human, Mouse, Bovine, Chicken	Clonality	Polyclonal
Applications	WB, IHC	Conjugation	Unconjugated
Form / Buffer	Liquid in 0.42% Potassium phosphate, 0.87% Sodium chloride, pH 7.3, 30% glycerol, and 0.01% sodium azide.		Storage at -20°C

BACKGROUND

Cadherins are calcium-dependent cell adhesion proteins . They preferentially interact with themselves in a homophilic manner in connecting cells; cadherins may thus contribute to the sorting of heterogeneous cell types . This cadherin may play a important role in endothelial cell biology through control of the cohesion and organization of the intercellular junctions . It associates with alpha-catenin forming a link to the cytoskeleton . Plays a role in coupling actin fibers to cell junctions in endothelial cells, via acting as a cell junctional complex anchor for AMOTL2 and MAGI1 . Acts in concert with KRIT1 and PALS1 to establish and maintain correct endothelial cell polarity and vascular lumen .

APPLICATION

To ensure optimal assay performance, AREX recommends conducting reagent titration tailored to each testing system for optimal detection results.

WB	1:500 - 1:1000
IHC	1:50 - 1:100

*Results are sample-specific. Please refer to your local assay conditions and test parameters for reference.

PRODUCT OVERVIEW

Description	Rabbit polyclonal antibody to CD144 (Phospho-Y731)
Specificity	Recognizes endogenous levels of CD144 protein only when phosphorylated at Y731.
Antibody Type	Primary antibody
Immunogen	KLH-conjugated synthetic phosphopeptide corresponding to residues surrounding Y731 of human CD144 protein. The exact sequence is proprietary.
Purification	The antibody was purified by immunogen affinity chromatography.
Molecular Weight	Predicted: 87 kD; Observed: 130 kD
Form/Buffer	Liquid in 0.42% Potassium phosphate, 0.87% Sodium chloride, pH 7.3, 30% glycerol, and 0.01% sodium azide.
Alternative Names	Cadherin-5; 7B4 antigen; Vascular endothelial cadherin; VE-cadherin; CD144
Gene Symbol	CDH5
Entrez Gene	1003(Human); 12562(Mouse)
SwissProt	P33151(Human); P55284(Mouse)

*AREX continuously optimizes our products. Webpage content may not reflect the latest updates. For inquiries, please contact info@arexbio.com or your local distributor.

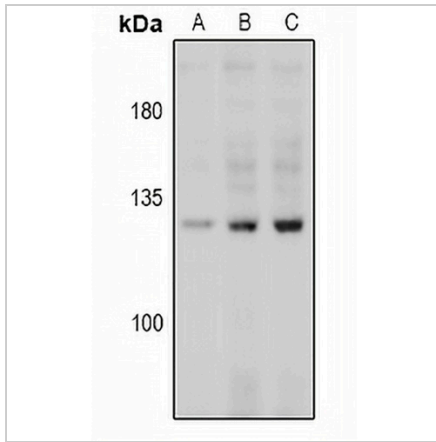
*Clone Number, Reactivity, Source/Host and Clonality can be found in the product name and Key Features section above.

DATASHEET

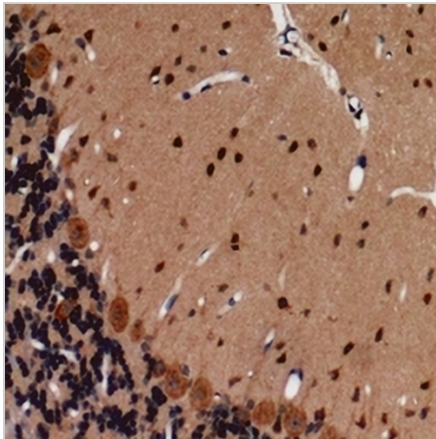
CD144 (Phospho-Y731) Rabbit Polyclonal Antibody

CAT. NO. APA10619

DATA



Western blot analysis of CD144 (Phospho-Y731) expression in HeLa Starved 4h (A), HeLa Starved 16h (B), HeLa Starved 24h (C) whole cell lysates. (Predicted band size: 87 kD; Observed band size: 130 kD)



Immunohistochemical analysis of CD144 (Phospho-Y731) staining in human brain formalin fixed paraffin embedded tissue section. The section was pre-treated using heat mediated antigen retrieval with sodium citrate buffer (pH 6.0). The section was then incubated with the antibody at room temperature and detected using an HRP conjugated compact polymer system. DAB was used as the chromogen. The section was then counterstained with haematoxylin and mounted with DPX.

STORAGE

Store at 4°C short term. For long term storage, store at -20°C, avoiding freeze/thaw cycles.

NOTE

For Research Use Only. Not for diagnostic, therapeutics, prophylactic or in vivo use.