

**DATASHEET**

**IL-15 Rabbit Polyclonal Antibody**

CAT. NO. APA10634

**KEY FEATURES**

Target	IL-15	Source / Host	Rabbit
Reactivity	Human, Mouse, Rat	Clonality	Polyclonal
Applications	WB	Conjugation	Unconjugated
Form / Buffer	Liquid in 0.42% Potassium phosphate, 0.87% Sodium chloride, pH 7.3, 30% glycerol, and 0.01% sodium azide.		Storage at-20°C

**BACKGROUND**

Cytokine that plays a major role in the development of inflammatory and protective immune responses to microbial invaders and parasites by modulating immune cells of both the innate and adaptive immune systems . Stimulates the proliferation of natural killer cells, T-cells and B-cells and promotes the secretion of several cytokines . In monocytes, induces the production of IL8 and monocyte chemotactic protein 1/CCL2, two chemokines that attract neutrophils and monocytes respectively to sites of infection . Unlike most cytokines, which are secreted in soluble form, IL15 is expressed in association with its high affinity IL15RA on the surface of IL15-producing cells and delivers signals to target cells that express IL2RB and IL2RG receptor subunits .

**APPLICATION**

To ensure optimal assay performance, AREX recommends conducting reagent titration tailored to each testing system for optimal detection results.

WB	1:500 - 1:1000
----	----------------

\*Results are sample-specific. Please refer to your local assay conditions and test parameters for reference.

**PRODUCT OVERVIEW**

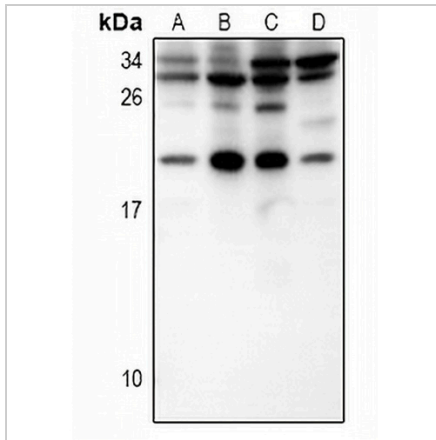
Description	Rabbit polyclonal antibody to IL-15
Specificity	Recognizes endogenous levels of IL-15 protein.
Antibody Type	Primary antibody
Immunogen	KLH-conjugated synthetic peptide encompassing a sequence within the center region of human IL-15. The exact sequence is proprietary.
Purification	The antibody was purified by immunogen affinity chromatography.
Molecular Weight	Predicted: 18 kD; Observed: 18 kD
Form/Buffer	Liquid in 0.42% Potassium phosphate, 0.87% Sodium chloride, pH 7.3, 30% glycerol, and 0.01% sodium azide.
Alternative Names	Interleukin-15; IL-15
Gene Symbol	IL15
Entrez Gene	3600(Human); 16168(Mouse); 25670(Rat)
SwissProt	P40933(Human); P48346(Mouse); P97604(Rat)

\*AREX continuously optimizes our products. Webpage content may not reflect the latest updates. For inquiries, please contact [info@arexbio.com](mailto:info@arexbio.com) or your local distributor.

\*Clone Number, Reactivity, Source/Host and Clonality can be found in the product name and Key Features section above.

**DATASHEET****IL-15 Rabbit Polyclonal Antibody**

CAT. NO. APA10634

**DATA**

Western blot analysis of IL-15 expression in HepG2 (A), HEK293T (B), AML12 (C), H9C2 (D) whole cell lysates. (Predicted band size: 18 kD; Observed band size: 18 kD)

**STORAGE**

Store at 4°C short term. For long term storage, store at -20°C, avoiding freeze/thaw cycles.

**NOTE**

For Research Use Only. Not for diagnostic, therapeutics, prophylactic or in vivo use.