

DATASHEET

Trypsin 2 Rabbit Polyclonal Antibody

CAT. NO. APA10636

KEY FEATURES

Target	Trypsin 2	Source / Host	Rabbit
Reactivity	Human, Mouse, Rat	Clonality	Polyclonal
Applications	WB	Conjugation	Unconjugated
Form / Buffer	Liquid in 0.42% Potassium phosphate, 0.87% Sodium chloride, pH 7.3, 30% glycerol, and 0.01% sodium azide.		Storage at -20°C

BACKGROUND

In the ileum, may be involved in defensin processing, including DEFA5.

APPLICATION

To ensure optimal assay performance, AREX recommends conducting reagent titration tailored to each testing system for optimal detection results.

WB	1:500 - 1:1000
----	----------------

*Results are sample-specific. Please refer to your local assay conditions and test parameters for reference.

PRODUCT OVERVIEW

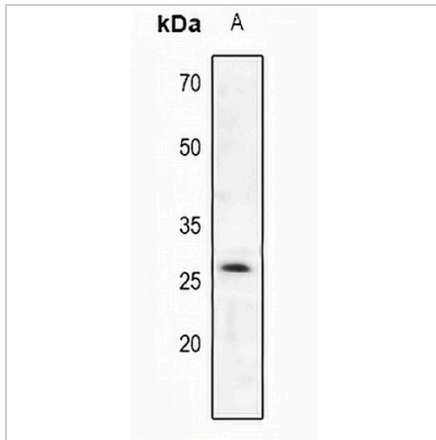
Description	Rabbit polyclonal antibody to Trypsin 2
Specificity	Recognizes endogenous levels of Trypsin 2 protein.
Antibody Type	Primary antibody
Immunogen	KLH-conjugated synthetic peptide encompassing a sequence within the center region of human Trypsin 2. The exact sequence is proprietary.
Purification	The antibody was purified by immunogen affinity chromatography.
Molecular Weight	Predicted: 26 kD; Observed: 26 kD
Form/Buffer	Liquid in 0.42% Potassium phosphate, 0.87% Sodium chloride, pH 7.3, 30% glycerol, and 0.01% sodium azide.
Alternative Names	TRY2; TRYP2; Trypsin-2; Anionic trypsinogen; Serine protease 2; Trypsin II
Gene Symbol	PRSS2
Entrez Gene	5645(Human); 22072(Mouse); 100912089; 25052(Rat)
SwissProt	P07478(Human); P07146(Mouse); P00763(Rat)

*AREX continuously optimizes our products. Webpage content may not reflect the latest updates. For inquiries, please contact info@arexbio.com or your local distributor.

*Clone Number, Reactivity, Source/Host and Clonality can be found in the product name and Key Features section above.

DATASHEET**Trypsin 2 Rabbit Polyclonal Antibody**

CAT. NO. APA10636

DATA

Western blot analysis of Trypsin 2 expression in HT102 (A), SW620 (B), CT26 (C), PC12 (D) whole cell lysates. (Predicted band size: 26 kD; Observed band size: 26 kD)

STORAGE

Store at 4°C short term. For long term storage, store at -20°C, avoiding freeze/thaw cycles.

NOTE

For Research Use Only. Not for diagnostic, therapeutics, prophylactic or in vivo use.