

DATASHEET

BID p11 Rabbit Polyclonal Antibody

CAT. NO. APA10641

KEY FEATURES

Target	BID p11	Source / Host	Rabbit
Reactivity	Human	Clonality	Polyclonal
Applications	WB	Conjugation	Unconjugated
Form / Buffer	Liquid in 0.42% Potassium phosphate, 0.87% Sodium chloride, pH 7.3, 30% glycerol, and 0.01% sodium azide.		Storage at -20°C

BACKGROUND

Induces caspases and apoptosis . Counters the protective effect of BCL2 .

APPLICATION

To ensure optimal assay performance, AREX recommends conducting reagent titration tailored to each testing system for optimal detection results.

WB	1:500 - 1:1000
----	----------------

*Results are sample-specific. Please refer to your local assay conditions and test parameters for reference.

PRODUCT OVERVIEW

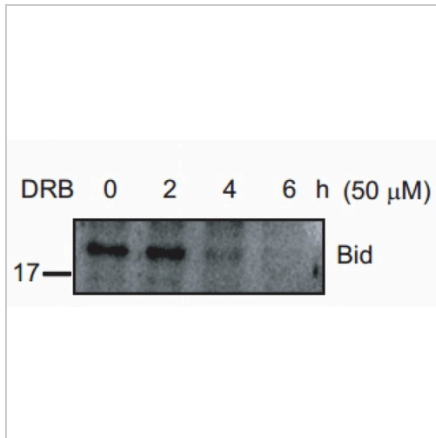
Description	Rabbit polyclonal antibody to BID p11
Specificity	Recognizes endogenous levels of BID p11 protein.
Antibody Type	Primary antibody
Immunogen	KLH-conjugated synthetic peptide encompassing a sequence within the center region of human BID p11. The exact sequence is proprietary.
Purification	The antibody was purified by immunogen affinity chromatography.
Molecular Weight	Predicted: 21 kD; Observed: 21 kD
Form/Buffer	Liquid in 0.42% Potassium phosphate, 0.87% Sodium chloride, pH 7.3, 30% glycerol, and 0.01% sodium azide.
Alternative Names	BH3-interacting domain death agonist; p22 BID; BID
Gene Symbol	BID
Entrez Gene	637(Human)
SwissProt	P55957(Human)

*AREX continuously optimizes our products. Webpage content may not reflect the latest updates. For inquiries, please contact info@arexbio.com or your local distributor.

*Clone Number, Reactivity, Source/Host and Clonality can be found in the product name and Key Features section above.

DATASHEET**BID p11 Rabbit Polyclonal Antibody**

CAT. NO. APA10641

DATA

Western blot analysis of BID p11 expression in OPM2 (A), OPM2 DRB-treated 2 hours (B), OPM2 DRB-treated 4 hours (C), OPM2 DRB-treated 6 hours (D) whole cell lysates. (Predicted band size: 21 kD; Observed band size: 21 kD)

STORAGE

Store at 4°C short term. For long term storage, store at -20°C, avoiding freeze/thaw cycles.

NOTE

For Research Use Only. Not for diagnostic, therapeutics, prophylactic or in vivo use.