

**DATASHEET**

**DUS2L Rabbit Polyclonal Antibody**

CAT. NO. APA10652

**KEY FEATURES**

Target	DUS2L	Source / Host	Rabbit
Reactivity	Human, Mouse, Rat, Monkey	Clonality	Polyclonal
Applications	WB, IHC	Conjugation	Unconjugated
Form / Buffer	Liquid in 0.42% Potassium phosphate, 0.87% Sodium chloride, pH 7.3, 30% glycerol, and 0.01% sodium azide.		Storage at -20°C

**BACKGROUND**

Catalyzes the NADPH-dependent synthesis of dihydrouridine, a modified base found in the D-loop of most tRNAs . Specifically modifies U20 in cytoplasmic tRNAs . Activity depends on the presence of guanosine at position 19 in the tRNA substrate . Negatively regulates the activation of EIF2AK2/PKR .

**APPLICATION**

To ensure optimal assay performance, AREX recommends conducting reagent titration tailored to each testing system for optimal detection results.

WB	1:500 - 1:1000
IHC	1:50 - 1:100

\*Results are sample-specific. Please refer to your local assay conditions and test parameters for reference.

**PRODUCT OVERVIEW**

Description	Rabbit polyclonal antibody to DUS2L
Specificity	Recognizes endogenous levels of DUS2L protein.
Antibody Type	Primary antibody
Immunogen	KLH-conjugated synthetic peptide encompassing a sequence within the C-term region of human DUS2L. The exact sequence is proprietary.
Purification	The antibody was purified by immunogen affinity chromatography.
Molecular Weight	Predicted: 55 kD; Observed: 55 kD
Form/Buffer	Liquid in 0.42% Potassium phosphate, 0.87% Sodium chloride, pH 7.3, 30% glycerol, and 0.01% sodium azide.
Alternative Names	DUS2L; tRNA-dihydrouridine(20) synthase [NAD(P)+]-like; Dihydrouridine synthase 2; Up-regulated in lung cancer protein 8; URLC8; tRNA-dihydrouridine synthase 2-like; hDUS2
Gene Symbol	DUS2L
Entrez Gene	54920(Human); 66369(Mouse)
SwissProt	Q9NX74(Human); Q9D7B1(Mouse)

\*AREX continuously optimizes our products. Webpage content may not reflect the latest updates. For inquiries, please contact [info@arexbio.com](mailto:info@arexbio.com) or your local distributor.

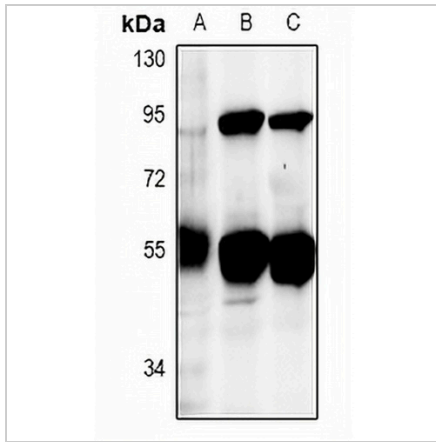
\*Clone Number, Reactivity, Source/Host and Clonality can be found in the product name and Key Features section above.

**DATASHEET**

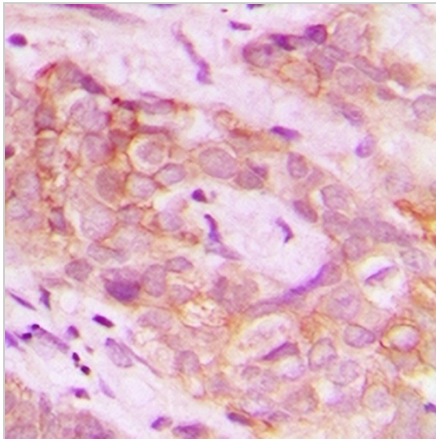
**DUS2L Rabbit Polyclonal Antibody**

CAT. NO. APA10652

**DATA**



Western blot analysis of DUS2L expression in HCT116 (A), mouse lung (B), rat lung (C) whole cell lysates. (Predicted band size: 55 kD; Observed band size: 55 kD)



Immunohistochemical analysis of DUS2L staining in human breast cancer formalin fixed paraffin embedded tissue section. The section was pre-treated using heat mediated antigen retrieval with sodium citrate buffer (pH 6.0). The section was then incubated with the antibody at room temperature and detected using an HRP conjugated compact polymer system. DAB was used as the chromogen. The section was then counterstained with haematoxylin and mounted with DPX.

**STORAGE**

Store at 4°C short term. For long term storage, store at -20°C, avoiding freeze/thaw cycles.

**NOTE**

For Research Use Only. Not for diagnostic, therapeutics, prophylactic or in vivo use.