

DATASHEET

KSR2 Rabbit Polyclonal Antibody

CAT. NO. APA10663

KEY FEATURES

Target	KSR2	Source / Host	Rabbit
Reactivity	Human, Mouse	Clonality	Polyclonal
Applications	WB, IHC, IF/ICC, IP	Conjugation	Unconjugated
Form / Buffer	Liquid in 0.42% Potassium phosphate, 0.87% Sodium chloride, pH 7.3, 30% glycerol, and 0.01% sodium azide.		Storage at -20°C

BACKGROUND

Location-regulated scaffold connecting MEK to RAF. Has very low protein kinase activity and can phosphorylate MAP2K1 at several Ser and Thr residues with very low efficiency (in vitro). Acts as MAP2K1/MEK1-dependent allosteric activator of BRAF; upon binding to MAP2K1/MEK1, dimerizes with BRAF and promotes BRAF-mediated phosphorylation of MAP2K1/MEK1. Acts as MAP2K1/MEK1-dependent allosteric activator of BRAF; upon binding to MAP2K1/MEK1, dimerizes with BRAF and promotes BRAF-mediated phosphorylation of MAP2K1/MEK1. Interaction with BRAF enhances KSR2-mediated phosphorylation of MAP2K1 (in vitro). Blocks MAP3K8 kinase activity and MAP3K8-mediated signaling.

APPLICATION

To ensure optimal assay performance, AREX recommends conducting reagent titration tailored to each testing system for optimal detection results.

WB	1:500 - 1:1000
IHC	1:50 - 1:100
IF/ICC	1:100 - 1:500
IP	1:10 - 1:100

*Results are sample-specific. Please refer to your local assay conditions and test parameters for reference.

PRODUCT OVERVIEW

Description	Rabbit polyclonal antibody to KSR2
Specificity	Recognizes endogenous levels of KSR2 protein.
Antibody Type	Primary antibody
Immunogen	KLH-conjugated synthetic peptide encompassing a sequence within the center region of human KSR2. The exact sequence is proprietary.
Purification	The antibody was purified by immunogen affinity chromatography.
Molecular Weight	Predicted: 107 kD; Observed: 108 kD
Form/Buffer	Liquid in 0.42% Potassium phosphate, 0.87% Sodium chloride, pH 7.3, 30% glycerol, and 0.01% sodium azide.
Alternative Names	Kinase suppressor of Ras 2; hKSR2
Gene Symbol	KSR2
Entrez Gene	283455(Human)
SwissProt	Q6VAB6(Human); Q3UVC0(Mouse)

*AREX continuously optimizes our products. Webpage content may not reflect the latest updates. For inquiries, please contact info@arexbio.com or your local distributor.

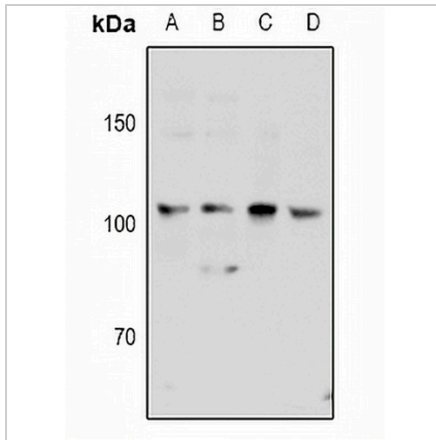
*Clone Number, Reactivity, Source/Host and Clonality can be found in the product name and Key Features section above.

DATASHEET

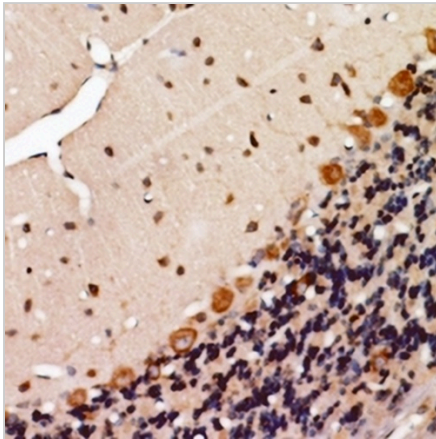
KSR2 Rabbit Polyclonal Antibody

CAT. NO. APA10663

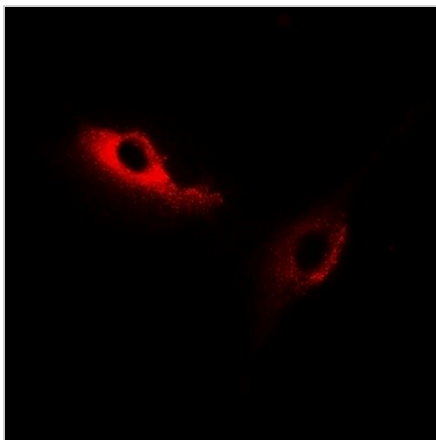
DATA



Western blot analysis of KSR2 expression in HeLa (A), HEK293T (B), A549 (C), mouse brain (D) whole cell lysates. (Predicted band size: 107 kD; Observed band size: 108 kD)



Immunohistochemical analysis of KSR2 staining in human brain formalin fixed paraffin embedded tissue section. The section was pre-treated using heat mediated antigen retrieval with sodium citrate buffer (pH 6.0). The section was then incubated with the antibody at room temperature and detected using an HRP conjugated compact polymer system. DAB was used as the chromogen. The section was then counterstained with haematoxylin and mounted with DPX.



Immunofluorescent analysis of KSR2 staining in HeLa cells. Formalin-fixed cells were permeabilized with 0.1% Triton X-100 in TBS for 5-10 minutes and blocked with 3% BSA-PBS for 30 minutes at room temperature. Cells were probed with the primary antibody in 3% BSA-PBS and incubated overnight at 4 °C in a humidified chamber. Cells were washed with PBST and incubated with Alexa Fluor 647-conjugated secondary antibody (red) in PBS at room temperature in the dark.

STORAGE

Store at 4°C short term. For long term storage, store at -20°C, avoiding freeze/thaw cycles.

NOTE

For Research Use Only. Not for diagnostic, therapeutics, prophylactic or in vivo use.