

DATASHEET

REPS1 Rabbit Polyclonal Antibody

CAT. NO. APA10665

KEY FEATURES

Target	REPS1	Source / Host	Rabbit
Reactivity	Human, Mouse, Rat	Clonality	Polyclonal
Applications	WB	Conjugation	Unconjugated
Form / Buffer	Liquid in 0.42% Potassium phosphate, 0.87% Sodium chloride, pH 7.3, 30% glycerol, and 0.01% sodium azide.		Storage at -20°C

BACKGROUND

May coordinate the cellular actions of activated EGF receptors and Ral-GTPases.

APPLICATION

To ensure optimal assay performance, AREX recommends conducting reagent titration tailored to each testing system for optimal detection results.

WB	1:500 - 1:1000
----	----------------

*Results are sample-specific. Please refer to your local assay conditions and test parameters for reference.

PRODUCT OVERVIEW

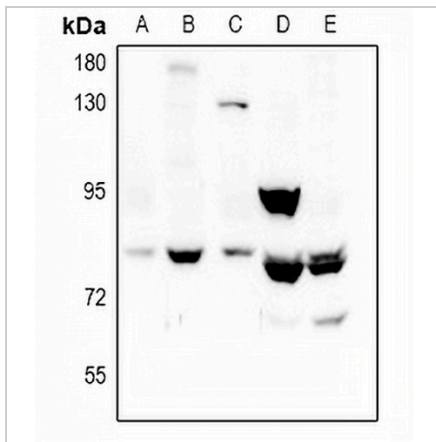
Description	Rabbit polyclonal antibody to REPS1
Specificity	Recognizes endogenous levels of REPS1 protein.
Antibody Type	Primary antibody
Immunogen	KLH-conjugated synthetic peptide encompassing a sequence within the C-term region of human REPS1. The exact sequence is proprietary.
Purification	The antibody was purified by immunogen affinity chromatography.
Molecular Weight	Predicted: 86 kD; Observed: 81 kD
Form/Buffer	Liquid in 0.42% Potassium phosphate, 0.87% Sodium chloride, pH 7.3, 30% glycerol, and 0.01% sodium azide.
Alternative Names	RalBP1-associated Eps domain-containing protein 1; RalBP1-interacting protein 1
Gene Symbol	REPS1
Entrez Gene	85021(Human); 19707(Mouse)
SwissProt	Q96D71(Human); O54916(Mouse)

*AREX continuously optimizes our products. Webpage content may not reflect the latest updates. For inquiries, please contact info@arexbio.com or your local distributor.

*Clone Number, Reactivity, Source/Host and Clonality can be found in the product name and Key Features section above.

DATASHEET**REPS1 Rabbit Polyclonal Antibody**

CAT. NO. APA10665

DATA

Western blot analysis of REPS1 expression in A549 (A), LO2 (B), HeLa (C), rat testis (D), mouse testis (E) whole cell lysates. (Predicted band size: 86 kD; Observed band size: 81 kD)

STORAGE

Store at 4°C short term. For long term storage, store at -20°C, avoiding freeze/thaw cycles.

NOTE

For Research Use Only. Not for diagnostic, therapeutics, prophylactic or in vivo use.