

DATASHEET

BLK (Phospho-Y389) Rabbit Polyclonal Antibody

CAT. NO. APA10669

KEY FEATURES

Target	BLK (Phospho-Y389)	Source / Host	Rabbit
Reactivity	Human, Mouse, Rat	Clonality	Polyclonal
Applications	WB	Conjugation	Unconjugated
Form / Buffer	Liquid in 0.42% Potassium phosphate, 0.87% Sodium chloride, pH 7.3, 30% glycerol, and 0.01% sodium azide.	Storage	at-20°C

BACKGROUND

Non-receptor tyrosine kinase involved in B-lymphocyte development, differentiation and signaling . B-cell receptor (BCR) signaling requires a tight regulation of several protein tyrosine kinases and phosphatases, and associated coreceptors . Binding of antigen to the B-cell antigen receptor (BCR) triggers signaling that ultimately leads to B-cell activation . Signaling through BLK plays an important role in transmitting signals through surface immunoglobulins and supports the pro-B to pre-B transition, as well as the signaling for growth arrest and apoptosis downstream of B-cell receptor . Specifically binds and phosphorylates CD79A at 'Tyr-188'and 'Tyr-199', as well as CD79B at 'Tyr-196' and 'Tyr-207' .

APPLICATION

To ensure optimal assay performance, AREX recommends conducting reagent titration tailored to each testing system for optimal detection results.

WB	1:500 - 1:1000
----	----------------

*Results are sample-specific. Please refer to your local assay conditions and test parameters for reference.

PRODUCT OVERVIEW

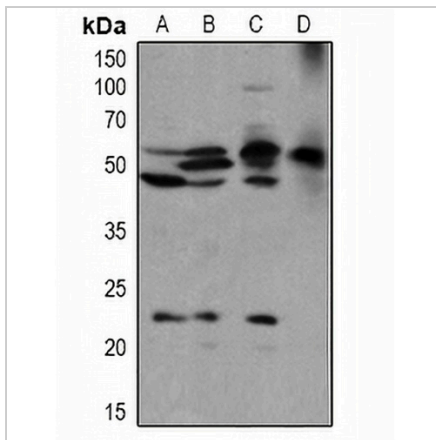
Description	Rabbit polyclonal antibody to BLK (Phospho-Y389)
Specificity	Recognizes endogenous levels of BLK protein only when phosphorylated at Y389.
Antibody Type	Primary antibody
Immunogen	KLH-conjugated synthetic phosphopeptide corresponding to residues surrounding Y389 of human BLK protein. The exact sequence is proprietary.
Purification	The antibody was purified by immunogen affinity chromatography.
Molecular Weight	Predicted: 57 kD; Observed: 58 kD
Form/Buffer	Liquid in 0.42% Potassium phosphate, 0.87% Sodium chloride, pH 7.3, 30% glycerol, and 0.01% sodium azide.
Alternative Names	Tyrosine-protein kinase Blk; B lymphocyte kinase; p55-Blk
Gene Symbol	BLK
Entrez Gene	640(Human); 12143(Mouse)
SwissProt	P51451(Human); P16277(Mouse)

*AREX continuously optimizes our products. Webpage content may not reflect the latest updates. For inquiries, please contact info@arexbio.com or your local distributor.

*Clone Number, Reactivity, Source/Host and Clonality can be found in the product name and Key Features section above.

DATASHEET**BLK (Phospho-Y389) Rabbit Polyclonal Antibody**

CAT. NO. APA10669

DATA

Western blot analysis of BLK (Phospho-Y389) expression in HEK293T (A), PANC1 (B), CT26 (C), rat spleen (D) whole cell lysates. (Predicted band size: 57 kD; Observed band size: 58 kD)

STORAGE

Store at 4°C short term. For long term storage, store at -20°C, avoiding freeze/thaw cycles.

NOTE

For Research Use Only. Not for diagnostic, therapeutics, prophylactic or in vivo use.