

DATASHEET

CEP95 Rabbit Polyclonal Antibody

CAT. NO. APA10670

KEY FEATURES

Target	CEP95	Source / Host	Rabbit
Reactivity	Human, Mouse, Rat, Monkey	Clonality	Polyclonal
Applications	WB, IHC	Conjugation	Unconjugated
Form / Buffer	Liquid in 0.42% Potassium phosphate, 0.87% Sodium chloride, pH 7.3, 30% glycerol, and 0.01% sodium azide.		Storage at -20°C

BACKGROUND

Centrosomal protein of 95 kDa (CEP95), also known as Coiled-coil domain-containing protein 45. Subcellular location: Cytoplasm, cytoskeleton, microtubule organizing center, centrosome; Cytoplasm, cytoskeleton, spindle pole

APPLICATION

To ensure optimal assay performance, AREX recommends conducting reagent titration tailored to each testing system for optimal detection results.

WB	1:500 - 1:1000
IHC	1:50 - 1:100

*Results are sample-specific. Please refer to your local assay conditions and test parameters for reference.

PRODUCT OVERVIEW

Description	Rabbit polyclonal antibody to CEP95
Specificity	Recognizes endogenous levels of CEP95 protein.
Antibody Type	Primary antibody
Immunogen	KLH-conjugated synthetic peptide encompassing a sequence within the center region of human CEP95. The exact sequence is proprietary.
Purification	The antibody was purified by immunogen affinity chromatography.
Molecular Weight	Predicted: 95 kD; Observed: 95; 76 kD
Form/Buffer	Liquid in 0.42% Potassium phosphate, 0.87% Sodium chloride, pH 7.3, 30% glycerol, and 0.01% sodium azide.
Alternative Names	CCDC45; CEP45; Centrosomal protein of 95 kDa; Cep95; Coiled-coil domain-containing protein 45
Gene Symbol	CEP95
Entrez Gene	90799(Human); 320162(Mouse); 287766(Rat)
SwissProt	Q96GE4(Human); Q8BVV7(Mouse); Q5XI03(Rat)

*AREX continuously optimizes our products. Webpage content may not reflect the latest updates. For inquiries, please contact info@arexbio.com or your local distributor.

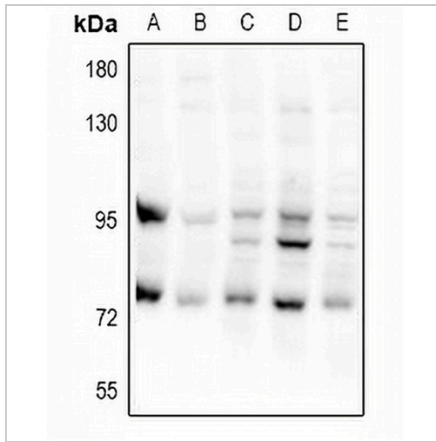
*Clone Number, Reactivity, Source/Host and Clonality can be found in the product name and Key Features section above.

DATASHEET

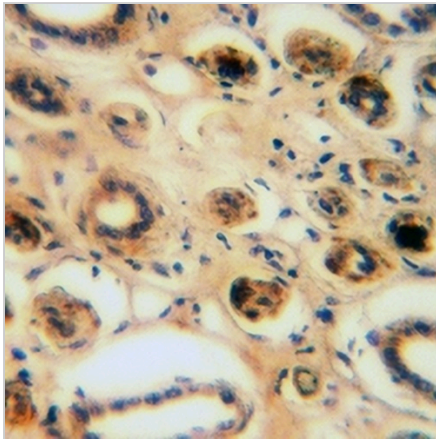
CEP95 Rabbit Polyclonal Antibody

CAT. NO. APA10670

DATA



Western blot analysis of CEP95 expression in CT26 (A), PC12 (B), A549 (C), HEK293T (D), LO2 (E) whole cell lysates. (Predicted band size: 95 kD; Observed band size: 95; 76 kD)



Immunohistochemical analysis of CEP95 staining in human colorectal cancer formalin fixed paraffin embedded tissue section. The section was pre-treated using heat mediated antigen retrieval with sodium citrate buffer (pH 6.0). The section was then incubated with the antibody at room temperature and detected using an HRP conjugated compact polymer system. DAB was used as the chromogen. The section was then counterstained with haematoxylin and mounted with DPX.

STORAGE

Store at 4°C short term. For long term storage, store at -20°C, avoiding freeze/thaw cycles.

NOTE

For Research Use Only. Not for diagnostic, therapeutics, prophylactic or in vivo use.