

DATASHEET

TWIK3 Rabbit Polyclonal Antibody

CAT. NO. APA10675

KEY FEATURES

Target	TWIK3	Source / Host	Rabbit
Reactivity	Human, Mouse, Rat	Clonality	Polyclonal
Applications	WB	Conjugation	Unconjugated
Form / Buffer	Liquid in 0.42% Potassium phosphate, 0.87% Sodium chloride, pH 7.3, 30% glycerol, and 0.01% sodium azide.		Storage at -20°C

BACKGROUND

Probable potassium channel subunit. No channel activity observed in vitro as protein remains in the endoplasmic reticulum. May need to associate with an as yet unknown partner in order to reach the plasma membrane.

APPLICATION

To ensure optimal assay performance, AREX recommends conducting reagent titration tailored to each testing system for optimal detection results.

WB	1:500 - 1:1000
----	----------------

*Results are sample-specific. Please refer to your local assay conditions and test parameters for reference.

PRODUCT OVERVIEW

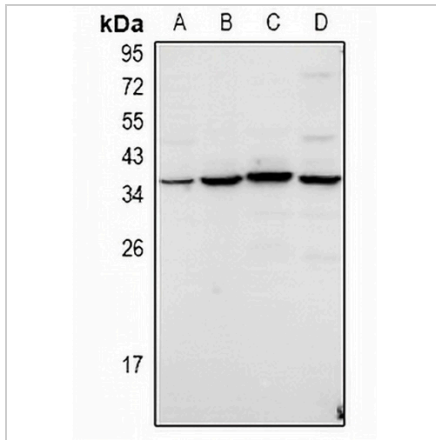
Description	Rabbit polyclonal antibody to TWIK3
Specificity	Recognizes endogenous levels of TWIK3 protein.
Antibody Type	Primary antibody
Immunogen	KLH-conjugated synthetic peptide encompassing a sequence within the C-term region of human TWIK3. The exact sequence is proprietary.
Purification	The antibody was purified by immunogen affinity chromatography.
Molecular Weight	Predicted: 31 kD; Observed: 36 kD
Form/Buffer	Liquid in 0.42% Potassium phosphate, 0.87% Sodium chloride, pH 7.3, 30% glycerol, and 0.01% sodium azide.
Alternative Names	Potassium channel subfamily K member 7
Gene Symbol	KCNK7
Entrez Gene	10089(Human); 16530(Mouse)
SwissProt	Q9Y2U2(Human); Q9Z2T1(Mouse)

*AREX continuously optimizes our products. Webpage content may not reflect the latest updates. For inquiries, please contact info@arexbio.com or your local distributor.

*Clone Number, Reactivity, Source/Host and Clonality can be found in the product name and Key Features section above.

DATASHEET**TWIK3 Rabbit Polyclonal Antibody**

CAT. NO. APA10675

DATA

Western blot analysis of TWIK3 expression in HCT116 (A), A549 (B), H9C2 (C), AML12 (D) whole cell lysates. (Predicted band size: 31 kD; Observed band size: 36 kD)

STORAGE

Store at 4°C short term. For long term storage, store at -20°C, avoiding freeze/thaw cycles.

NOTE

For Research Use Only. Not for diagnostic, therapeutics, prophylactic or in vivo use.