

**DATASHEET**

**CD85e Rabbit Polyclonal Antibody**

CAT. NO. APA10681

**KEY FEATURES**

Target	CD85e	Source / Host	Rabbit
Reactivity	Human	Clonality	Polyclonal
Applications	WB, IHC	Conjugation	Unconjugated
Form / Buffer	Liquid in 0.42% Potassium phosphate, 0.87% Sodium chloride, pH 7.3, 30% glycerol, and 0.01% sodium azide.		Storage at-20°C

**BACKGROUND**

Part of the innate immune responses against microbial infection . Specifically recognizes a set of N-terminally truncated immunoglobulins that are produced via cleavage by proteases from a range of pathogenic bacteria and fungi, including L.pneumophila, M.hyorhinis, S.pneumoniae, S.aureus and C.albicans . Recognizes epitopes that are in part in the variable region of the immunoglobulin light chains, but requires also the constant region for signaling . Binds to a subset of cleaved IgM, IgG3 and IgG4 molecules, but does not bind cleaved IgA1 . Binding of N-terminally truncated immunoglobulins mediates activation of neutrophils .

**APPLICATION**

To ensure optimal assay performance, AREX recommends conducting reagent titration tailored to each testing system for optimal detection results.

WB	1:500 - 1:1000
IHC	1:50 - 1:100

\*Results are sample-specific. Please refer to your local assay conditions and test parameters for reference.

**PRODUCT OVERVIEW**

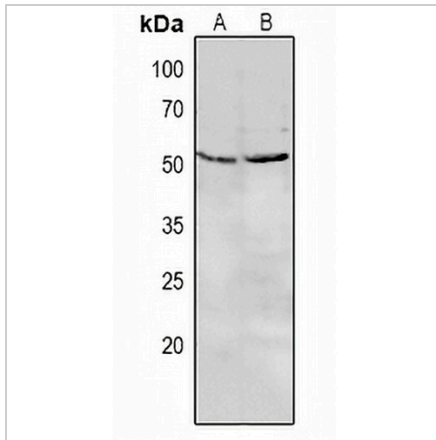
Description	Rabbit polyclonal antibody to CD85e
Specificity	Recognizes endogenous levels of CD85e protein.
Antibody Type	Primary antibody
Immunogen	KLH-conjugated synthetic peptide encompassing a sequence within the center region of human CD85e. The exact sequence is proprietary.
Purification	The antibody was purified by immunogen affinity chromatography.
Molecular Weight	Predicted: 52; Observed: 53 kD
Form/Buffer	Liquid in 0.42% Potassium phosphate, 0.87% Sodium chloride, pH 7.3, 30% glycerol, and 0.01% sodium azide.
Alternative Names	LILRA2; ILT1; LIR7; Leukocyte immunoglobulin-like receptor subfamily A member 2; CD85 antigen-like family member H; Immunoglobulin-like transcript 1; ILT-1; Leukocyte immunoglobulin-like receptor 7; LIR-7; CD85h; LILRA3; ILT6; LIR4; Leukocyte immunoglobulin-like receptor subfamily A member 3; CD85 antigen-like family member E; Immunoglobulin-like transcript 6; ILT-6; Leukocyte immunoglobulin-like receptor 4; LIR-4; Monocyte inhibitory receptor HM43/HM31; CD85e
Gene Symbol	LILRA2; LILRA3
Entrez Gene	11027; 11026(Human)
SwissProt	Q8N149; Q8N6C8(Human)

\*AREX continuously optimizes our products. Webpage content may not reflect the latest updates. For inquiries, please contact [info@arexbio.com](mailto:info@arexbio.com) or your local distributor.

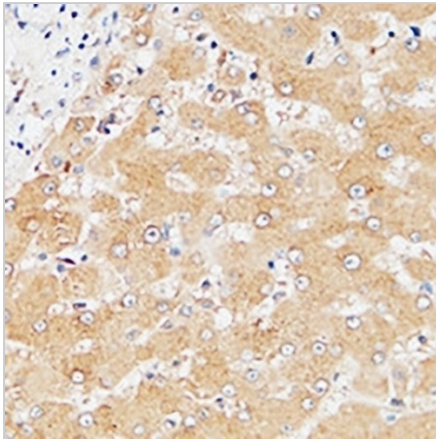
\*Clone Number, Reactivity, Source/Host and Clonality can be found in the product name and Key Features section above.

**DATASHEET****CD85e Rabbit Polyclonal Antibody**

CAT. NO. APA10681

**DATA**

Western blot analysis of CD85e expression in MCF7 (A), A549 (B) whole cell lysates. (Predicted band size: 52; 47 kD; Observed band size: 53 kD)



Immunohistochemical analysis of CD85e staining in human liver formalin fixed paraffin embedded tissue section. The section was pre-treated using heat mediated antigen retrieval with sodium citrate buffer (pH 6.0). The section was then incubated with the antibody at room temperature and detected using an HRP conjugated compact polymer system. DAB was used as the chromogen. The section was then counterstained with haematoxylin and mounted with DPX.

**STORAGE**

Store at 4°C short term. For long term storage, store at -20°C, avoiding freeze/thaw cycles.

**NOTE**

For Research Use Only. Not for diagnostic, therapeutics, prophylactic or in vivo use.