

DATASHEET
MNK2 (Phospho-T249) Rabbit Polyclonal Antibody
CAT. NO. APA10690
KEY FEATURES

Target	MNK2 (Phospho-T249)	Source / Host	Rabbit
Reactivity	Human, Mouse, Rat	Clonality	Polyclonal
Applications	WB, IHC, IF/ICC	Conjugation	Unconjugated
Form / Buffer	Liquid in 0.42% Potassium phosphate, 0.87% Sodium chloride, pH 7.3, 30% glycerol, and 0.01% sodium azide.	Storage	at -20°C

BACKGROUND

Serine/threonine-protein kinase that phosphorylates SFPQ/PSF, HNRNPA1 and EIF4E. May play a role in the response to environmental stress and cytokines. Appears to regulate translation by phosphorylating EIF4E, thus increasing the affinity of this protein for the 7-methylguanosine-containing mRNA cap. Required for mediating PP2A-inhibition-induced EIF4E phosphorylation. Triggers EIF4E shuttling from cytoplasm to nucleus. Isoform 1 displays a high basal kinase activity, but isoform 2 exhibits a very low kinase activity. Acts as a mediator of the suppressive effects of IFN γ on hematopoiesis. Negative regulator for signals that control generation of arsenic trioxide As₂O₃-dependent apoptosis and anti-leukemic responses.

APPLICATION

To ensure optimal assay performance, AREX recommends conducting reagent titration tailored to each testing system for optimal detection results.

WB	1:500 - 1:1000
IHC	1:50 - 1:100
IF/ICC	1:50 - 1:200

*Results are sample-specific. Please refer to your local assay conditions and test parameters for reference.

PRODUCT OVERVIEW

Description	Rabbit polyclonal antibody to MNK2 (Phospho-T249)
Specificity	Recognizes endogenous levels of MNK2 protein only when phosphorylated at T249.
Antibody Type	Primary antibody
Immunogen	KLH-conjugated synthetic phosphopeptide corresponding to residues surrounding T249 of human MNK2 protein. The exact sequence is proprietary.
Purification	The antibody was purified by immunogen affinity chromatography.
Molecular Weight	Predicted: 51 kD; Observed: 52 kD
Form/Buffer	Liquid in 0.42% Potassium phosphate, 0.87% Sodium chloride, pH 7.3, 30% glycerol, and 0.01% sodium azide.
Alternative Names	GPRK7; MNK2; MAP kinase-interacting serine/threonine-protein kinase 2; MAP kinase signal-integrating kinase 2; MAPK signal-integrating kinase 2; Mnk2
Gene Symbol	MKNK2
Entrez Gene	2872(Human); 17347(Mouse); 299618(Rat)
SwissProt	Q9HBH9(Human); Q8CDB0(Mouse); Q5U2N4(Rat)

*AREX continuously optimizes our products. Webpage content may not reflect the latest updates. For inquiries, please contact info@arexbio.com or your local distributor.

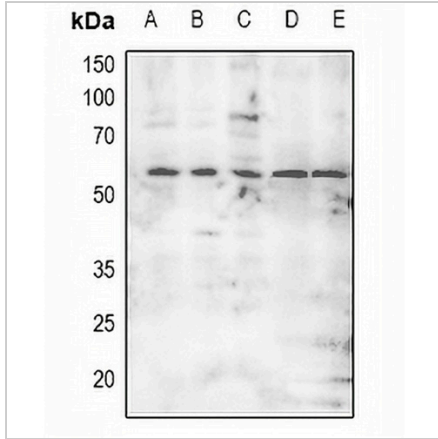
*Clone Number, Reactivity, Source/Host and Clonality can be found in the product name and Key Features section above.

DATASHEET

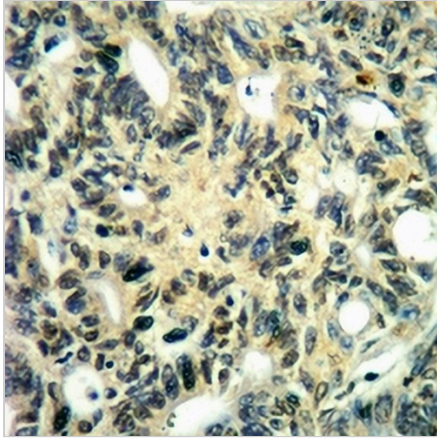
MNK2 (Phospho-T249) Rabbit Polyclonal Antibody

CAT. NO. APA10690

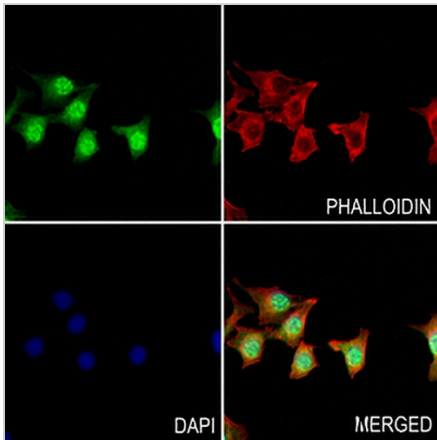
DATA



Western blot analysis of MNK2 (Phospho-T249) expression in SGC7901 (A), PC3 (B), Jurkat (C), mouse eye (D), rat brain (E) whole cell lysates. (Predicted band size: 51 kD; Observed band size: 52 kD)



Immunohistochemical analysis of MNK2 (Phospho-T249) staining in human lung cancer formalin fixed paraffin embedded tissue section. The section was pre-treated using heat mediated antigen retrieval with sodium citrate buffer (pH 6.0). The section was then incubated with the antibody at room temperature and detected using an HRP conjugated compact polymer system. DAB was used as the chromogen. The section was then counterstained with haematoxylin and mounted with DPX.



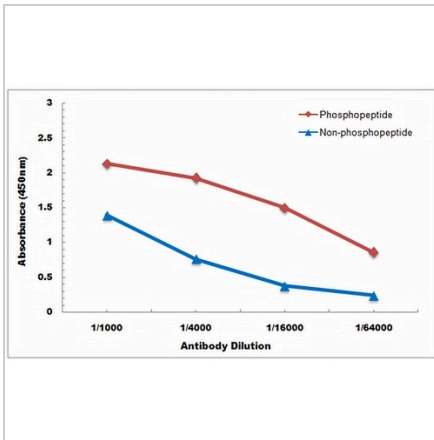
Immunofluorescent analysis of MNK2 (Phospho-T249) staining in HepG2 cells. Formalin-fixed cells were permeabilized with 0.1% Triton X-100 in TBS for 5-10 minutes and blocked with 3% BSA-PBS for 30 minutes at room temperature. Cells were probed with the primary antibody in 3% BSA-PBS and incubated overnight at 4 °C in a humidified chamber. Cells were washed with PBST and incubated with a AREX® Fluor 488 - conjugated secondary antibody (green) in PBS at room temperature in the dark. Phalloidin - AREX® Fluor 594 was used to stain Actin filaments (red). DAPI was used to stain the cell nuclei (blue).

DATASHEET

MNK2 (Phospho-T249) Rabbit Polyclonal Antibody

CAT. NO. APA10690

DATA (CONTINUED)



Direct ELISA antibody dose-response curve using Anti-MNK2 (Phospho-T249) Antibody. Antigen (Phosphopeptide and non-phosphopeptide) concentration is 5 ug/ml. Goat Anti-Rabbit IgG (H&L) - HRP was used as the secondary antibody, and signal was developed by TMB substrate.

STORAGE

Store at 4°C short term. For long term storage, store at -20°C, avoiding freeze/thaw cycles.

NOTE

For Research Use Only. Not for diagnostic, therapeutics, prophylactic or in vivo use.