

DATASHEET

CDC25A (Phospho-S82) Rabbit Polyclonal Antibody

CAT. NO. APA10705

KEY FEATURES

Target	CDC25A (Phospho-S82)	Source / Host	Rabbit
Reactivity	Human, Mouse, Rat	Clonality	Polyclonal
Applications	WB, IF/ICC	Conjugation	Unconjugated
Form / Buffer	Liquid in 0.42% Potassium phosphate, 0.87% Sodium chloride, pH 7.3, 30% glycerol, and 0.01% sodium azide.		Storage at -20°C

BACKGROUND

Tyrosine protein phosphatase which functions as a dosage-dependent inducer of mitotic progression . Directly dephosphorylates CDK1 and stimulates its kinase activity . Also dephosphorylates CDK2 in complex with cyclin-E, in vitro .

APPLICATION

To ensure optimal assay performance, AREX recommends conducting reagent titration tailored to each testing system for optimal detection results.

WB	1:500 - 1:1000
IF/ICC	1:50 - 1:200

*Results are sample-specific. Please refer to your local assay conditions and test parameters for reference.

PRODUCT OVERVIEW

Description	Rabbit polyclonal antibody to CDC25A (Phospho-S82)
Specificity	Recognizes endogenous levels of CDC25A protein only when phosphorylated at S82.
Antibody Type	Primary antibody
Immunogen	KLH-conjugated synthetic phosphopeptide corresponding to residues surrounding S82 of human CDC25A protein. The exact sequence is proprietary.
Purification	The antibody was purified by immunogen affinity chromatography.
Molecular Weight	Predicted: 59 kD; Observed: 70 kD
Form/Buffer	Liquid in 0.42% Potassium phosphate, 0.87% Sodium chloride, pH 7.3, 30% glycerol, and 0.01% sodium azide.
Alternative Names	M-phase inducer phosphatase 1; Dual specificity phosphatase Cdc25A
Gene Symbol	CDC25A
Entrez Gene	993(Human); 12530(Mouse); 171102(Rat)
SwissProt	P30304(Human); P48964(Mouse); P48965(Rat)

*AREX continuously optimizes our products. Webpage content may not reflect the latest updates. For inquiries, please contact info@arexbio.com or your local distributor.

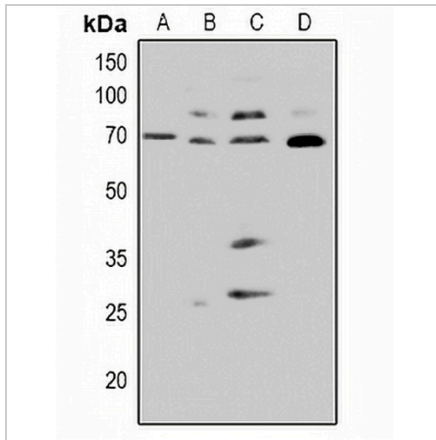
*Clone Number, Reactivity, Source/Host and Clonality can be found in the product name and Key Features section above.

DATASHEET

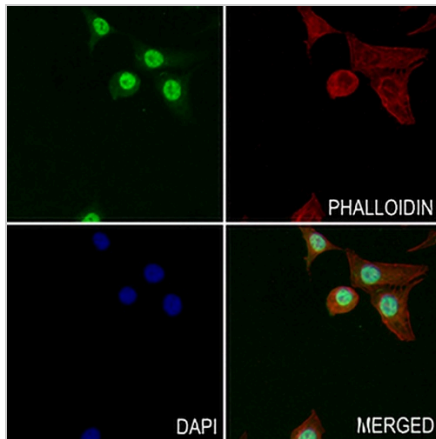
CDC25A (Phospho-S82) Rabbit Polyclonal Antibody

CAT. NO. APA10705

DATA



Western blot analysis of CDC25A (Phospho-S82) expression in HeLa (A), HCT116 (B), NIH3T3 (C), PC12 (D) whole cell lysates. (Predicted band size: 59 kD; Observed band size: 70 kD)



Immunofluorescent analysis of CDC25A (Phospho-S82) staining in HepG2 cells. Formalin-fixed cells were permeabilized with 0.1% Triton X-100 in TBS for 5-10 minutes and blocked with 3% BSA-PBS for 30 minutes at room temperature. Cells were probed with the primary antibody in 3% BSA-PBS and incubated overnight at 4 °C in a humidified chamber. Cells were washed with PBST and incubated with a AREX® Fluor 488 - conjugated secondary antibody (green) in PBS at room temperature in the dark. Phalloidin - AREX® Fluor 594 was used to stain Actin filaments (red). DAPI was used to stain the cell nuclei (blue).

STORAGE

Store at 4°C short term. For long term storage, store at -20°C, avoiding freeze/thaw cycles.

NOTE

For Research Use Only. Not for diagnostic, therapeutics, prophylactic or in vivo use.