

DATASHEET
Acinus (Phospho-S1180) Rabbit Polyclonal Antibody
CAT. NO. APA10711
KEY FEATURES

Target	Acinus (Phospho-S1180)	Source / Host	Rabbit
Reactivity	Human, Mouse, Rat	Clonality	Polyclonal
Applications	WB	Conjugation	Unconjugated
Form / Buffer	Liquid in 0.42% Potassium phosphate, 0.87% Sodium chloride, pH 7.3, 30% glycerol, and 0.01% sodium azide.		Storage at -20°C

BACKGROUND

Auxiliary component of the splicing-dependent multiprotein exon junction complex (EJC) deposited at splice junction on mRNAs. The EJC is a dynamic structure consisting of core proteins and several peripheral nuclear and cytoplasmic associated factors that join the complex only transiently either during EJC assembly or during subsequent mRNA metabolism. Component of the ASAP complexes which bind RNA in a sequence-independent manner and are proposed to be recruited to the EJC prior to or during the splicing process and to regulate specific excision of introns in specific transcription subsets; ACIN1 confers RNA-binding to the complex. The ASAP complex can inhibit RNA processing during in vitro splicing reactions.

APPLICATION

To ensure optimal assay performance, AREX recommends conducting reagent titration tailored to each testing system for optimal detection results.

WB	1:500 - 1:1000
----	----------------

*Results are sample-specific. Please refer to your local assay conditions and test parameters for reference.

PRODUCT OVERVIEW

Description	Rabbit polyclonal antibody to Acinus (Phospho-S1180)
Specificity	Recognizes endogenous levels of Acinus protein only when phosphorylated at S1180.
Antibody Type	Primary antibody
Immunogen	KLH-conjugated synthetic phosphopeptide corresponding to residues surrounding S1180 of human Acinus protein. The exact sequence is proprietary.
Purification	The antibody was purified by immunogen affinity chromatography.
Molecular Weight	Predicted: 151; Observed: 210 kD
Form/Buffer	Liquid in 0.42% Potassium phosphate, 0.87% Sodium chloride, pH 7.3, 30% glycerol, and 0.01% sodium azide.
Alternative Names	ACIN1; ACINUS; KIAA0670; Apoptotic chromatin condensation inducer in the nucleus; Acinus; SCAF4; KIAA1172; SFRS15; Splicing factor arginine/serine-rich 15; CTD-binding SR-like protein RA4; SR-related and CTD-associated factor 4; PNISR; C6orf111; SFRS18; SRRP130; HSPC261; HSPC306; Arginine/serine-rich protein PNISR; PNN-interacting serine/arginine-rich protein; SR-related protein; SR-rich protein; Serine/arginine-rich-splicing regulatory protein 130; SRp130; Splicing factor arginine/serine-rich 130; Splicing factor arginine/serine-rich 18; RBM39; HCC1; RNPC2; RNA-binding protein 39; Hepatocellular carcinoma protein 1; RNA-binding motif protein 39; RNA-binding region-containing protein 2; Splicing factor HCC1
Gene Symbol	ACIN1
Entrez Gene	22985; 57466; 25957; 9584(Human); 56215; 170791(Mouse)
SwissProt	Q9UKV3; O95104; Q8TF01; Q14498(Human); Q9JIX8; A2AJT4; Q8VH51(Mouse); Q63627(Rat)

*AREX continuously optimizes our products. Webpage content may not reflect the latest updates. For inquiries, please contact info@arexbio.com or your local distributor.

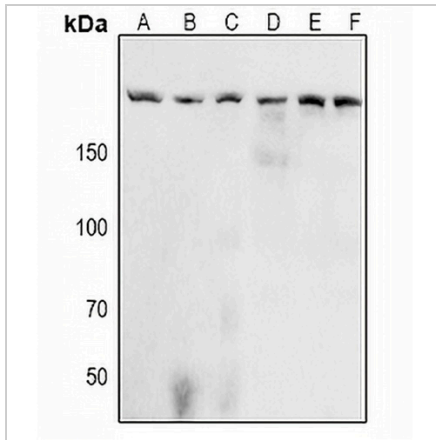
*Clone Number, Reactivity, Source/Host and Clonality can be found in the product name and Key Features section above.

DATASHEET

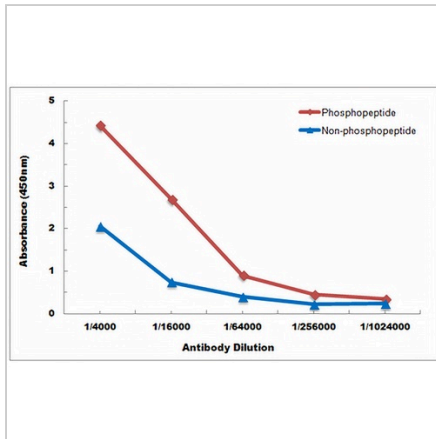
Acinus (Phospho-S1180) Rabbit Polyclonal Antibody

CAT. NO. APA10711

DATA



Western blot analysis of Acinus (Phospho-S1180) expression in A549 (A), HeLa (B), Jurkat (C), NIH3T3 (D), H9C2 (E), PC12 (F) whole cell lysates. (Predicted band size: 151; 125; 92; 59 kD; Observed band size: 210 kD)



Direct ELISA antibody dose-response curve using Anti-Acinus (Phospho-S1180) Antibody. Antigen (Phosphopeptide and non-phosphopeptide) concentration is 5 ug/ml. Goat Anti-Rabbit IgG (H&L) - HRP was used as the secondary antibody, and signal was developed by TMB substrate.

STORAGE

Store at 4°C short term. For long term storage, store at -20°C, avoiding freeze/thaw cycles.

NOTE

For Research Use Only. Not for diagnostic, therapeutics, prophylactic or in vivo use.