

**DATASHEET**

**DNA Polymerase iota Rabbit Polyclonal Antibody**

CAT. NO. APA10739

**KEY FEATURES**

Target	DNA Polymerase iota	Source / Host	Rabbit
Reactivity	Human, Monkey	Clonality	Polyclonal
Applications	WB, IHC	Conjugation	Unconjugated
Form / Buffer	Liquid in 0.42% Potassium phosphate, 0.87% Sodium chloride, pH 7.3, 30% glycerol, and 0.01% sodium azide.		Storage at -20°C

**BACKGROUND**

Error-prone DNA polymerase specifically involved in DNA repair . Plays an important role in translesion synthesis, where the normal high-fidelity DNA polymerases cannot proceed and DNA synthesis stalls . Favors Hoogsteen base-pairing in the active site . Inserts the correct base with high-fidelity opposite an adenosine template . Exhibits low fidelity and efficiency opposite a thymidine template, where it will preferentially insert guanosine . May play a role in hypermutation of immunoglobulin genes . Forms a Schiff base with 5'-deoxyribose phosphate at abasic sites, but may not have lyase activity .

**APPLICATION**

To ensure optimal assay performance, AREX recommends conducting reagent titration tailored to each testing system for optimal detection results.

WB	1:500 - 1:1000
IHC	1:50 - 1:100

\*Results are sample-specific. Please refer to your local assay conditions and test parameters for reference.

**PRODUCT OVERVIEW**

Description	Rabbit polyclonal antibody to DNA Polymerase iota
Specificity	Recognizes endogenous levels of DNA Polymerase iota protein.
Antibody Type	Primary antibody
Immunogen	KLH-conjugated synthetic peptide encompassing a sequence within the C-term region of human DNA Polymerase iota. The exact sequence is proprietary.
Purification	The antibody was purified by immunogen affinity chromatography.
Molecular Weight	Predicted: 83 kD; Observed: 90 kD
Form/Buffer	Liquid in 0.42% Potassium phosphate, 0.87% Sodium chloride, pH 7.3, 30% glycerol, and 0.01% sodium azide.
Alternative Names	RAD30B; DNA polymerase iota; Eta2; RAD30 homolog B
Gene Symbol	POLI
Entrez Gene	11201(Human)
SwissProt	Q9UNA4(Human)

\*AREX continuously optimizes our products. Webpage content may not reflect the latest updates. For inquiries, please contact [info@arexbio.com](mailto:info@arexbio.com) or your local distributor.

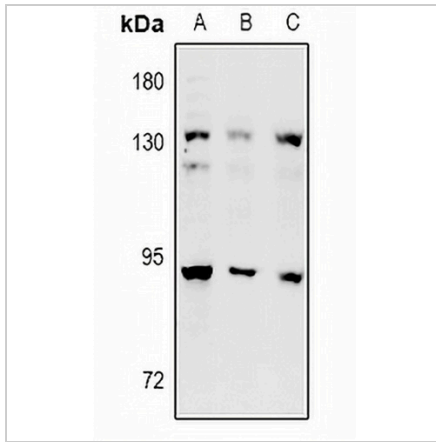
\*Clone Number, Reactivity, Source/Host and Clonality can be found in the product name and Key Features section above.

**DATASHEET**

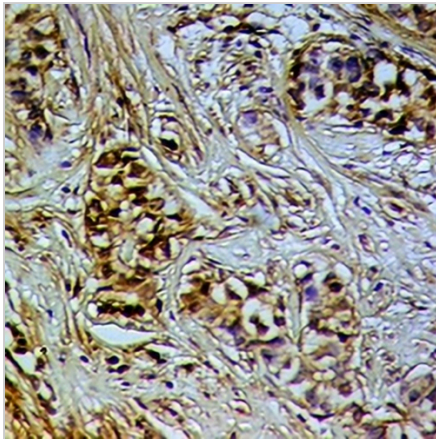
**DNA Polymerase iota Rabbit Polyclonal Antibody**

CAT. NO. APA10739

**DATA**



Western blot analysis of DNA Polymerase iota expression in A549 (A), U87MG (B), MCF7 (C) whole cell lysates. (Predicted band size: 83 kD; Observed band size: 90 kD)



Immunohistochemical analysis of DNA Polymerase iota staining in human breast cancer formalin fixed paraffin embedded tissue section. The section was pre-treated using heat mediated antigen retrieval with sodium citrate buffer (pH 6.0). The section was then incubated with the antibody at room temperature and detected using an HRP conjugated compact polymer system. DAB was used as the chromogen. The section was then counterstained with haematoxylin and mounted with DPX.

**STORAGE**

Store at 4°C short term. For long term storage, store at -20°C, avoiding freeze/thaw cycles.

**NOTE**

For Research Use Only. Not for diagnostic, therapeutics, prophylactic or in vivo use.