

## DATASHEET

# SIX1 Rabbit Polyclonal Antibody

CAT. NO. APA10756

### KEY FEATURES

Target	SIX1	Source / Host	Rabbit
Reactivity	Human, Mouse, Rat, Monkey	Clonality	Polyclonal
Applications	WB	Conjugation	Unconjugated
Form / Buffer	Liquid in 0.42% Potassium phosphate, 0.87% Sodium chloride, pH 7.3, 30% glycerol, and 0.01% sodium azide.		Storage at -20°C

### BACKGROUND

Transcription factor that is involved in the regulation of cell proliferation, apoptosis and embryonic development . Plays an important role in the development of several organs, including kidney, muscle and inner ear . Depending on context, functions as a transcriptional repressor or activator . Lacks an activation domain, and requires interaction with EYA family members for transcription activation . Mediates nuclear translocation of EYA1 and EYA2 . Binds the 5'-TCA[AG][AG]TTNC-3' motif present in the MEF3 element in the MYOG promoter and CIDEA enhancer . Regulates the expression of numerous genes, including MYC, CCND1 and EZR . Acts as an activator of the IGFBP5 promoter, probably coactivated by EYA2 .

### APPLICATION

To ensure optimal assay performance, AREX recommends conducting reagent titration tailored to each testing system for optimal detection results.

WB	1:500 - 1:1000
----	----------------

\*Results are sample-specific. Please refer to your local assay conditions and test parameters for reference.

### PRODUCT OVERVIEW

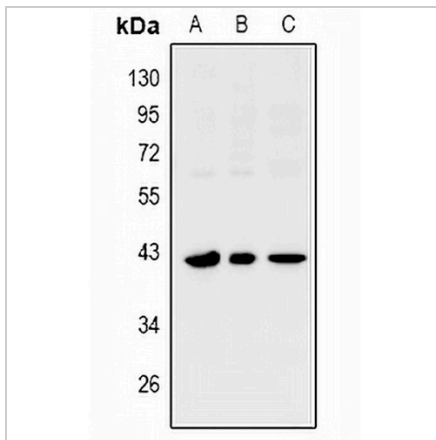
Description	Rabbit polyclonal antibody to SIX1
Specificity	Recognizes endogenous levels of SIX1 protein.
Antibody Type	Primary antibody
Immunogen	KLH-conjugated synthetic peptide encompassing a sequence within the center region of human SIX1. The exact sequence is proprietary.
Purification	The antibody was purified by immunogen affinity chromatography.
Molecular Weight	Predicted: 32 kD; Observed: 43 kD
Form/Buffer	Liquid in 0.42% Potassium phosphate, 0.87% Sodium chloride, pH 7.3, 30% glycerol, and 0.01% sodium azide.
Alternative Names	Homeobox protein SIX1; Sine oculis homeobox homolog 1
Gene Symbol	SIX1
Entrez Gene	6495(Human); 20471(Mouse)
SwissProt	Q15475(Human); Q62231(Mouse)

\*AREX continuously optimizes our products. Webpage content may not reflect the latest updates. For inquiries, please contact [info@arexbio.com](mailto:info@arexbio.com) or your local distributor.

\*Clone Number, Reactivity, Source/Host and Clonality can be found in the product name and Key Features section above.

**DATASHEET****SIX1 Rabbit Polyclonal Antibody**

CAT. NO. APA10756

**DATA**

Western blot analysis of SIX1 expression in PC12 (A), MEF (B), COS7 (C) whole cell lysates.  
(Predicted band size: 32 kD; Observed band size: 43 kD)

**STORAGE**

Store at 4°C short term. For long term storage, store at -20°C, avoiding freeze/thaw cycles.

**NOTE**

For Research Use Only. Not for diagnostic, therapeutics, prophylactic or in vivo use.