

DATASHEET

Mannose Binding Protein Rabbit Polyclonal Antibody

CAT. NO. APA10761

KEY FEATURES

Target	Mannose Binding Protein	Source / Host	Rabbit
Reactivity	Human, Mouse, Rat	Clonality	Polyclonal
Applications	WB, IF/ICC	Conjugation	Unconjugated
Form / Buffer	Liquid in 0.42% Potassium phosphate, 0.87% Sodium chloride, pH 7.3, 30% glycerol, and 0.01% sodium azide.		Storage at -20°C

BACKGROUND

Calcium-dependent lectin, which acts as a pattern recognition receptor that initiates the lectin pathway of the complement system, a cascade of proteins that leads to phagocytosis and breakdown of pathogens and signaling that strengthens the adaptive immune system . Specifically recognizes and binds the mannose moiety of carbohydrates on the pathogen surface, activating the MASP1 serine protease and initiating the proteolytic cascade of the lectin complement pathway . Upon SARS coronavirus-2/SARS-CoV-2 infection, activates the complement lectin pathway which leads to the inhibition SARS-CoV-2 infection and a reduction of the induced inflammatory response . May bind DNA .

APPLICATION

To ensure optimal assay performance, AREX recommends conducting reagent titration tailored to each testing system for optimal detection results.

WB	1:500 - 1:1000
IF/ICC	1:50 - 1:200

*Results are sample-specific. Please refer to your local assay conditions and test parameters for reference.

PRODUCT OVERVIEW

Description	Rabbit polyclonal antibody to Mannose Binding Protein
Specificity	Recognizes endogenous levels of Mannose Binding Protein protein.
Antibody Type	Primary antibody
Immunogen	KLH-conjugated synthetic peptide encompassing a sequence within the center region of human Mannose Binding Protein. The exact sequence is proprietary.
Purification	The antibody was purified by immunogen affinity chromatography.
Molecular Weight	Predicted: 26 kD; Observed: 26 kD
Form/Buffer	Liquid in 0.42% Potassium phosphate, 0.87% Sodium chloride, pH 7.3, 30% glycerol, and 0.01% sodium azide.
Alternative Names	COLEC1; MBL; Mannose-binding protein C; MBP-C; Collectin-1; MBP1; Mannan-binding protein; Mannose-binding lectin
Gene Symbol	MBL2
Entrez Gene	4153(Human); 17195(Mouse); 100911854; 64668(Rat)
SwissProt	P11226(Human); P41317(Mouse); P08661(Rat)

*AREX continuously optimizes our products. Webpage content may not reflect the latest updates. For inquiries, please contact info@arexbio.com or your local distributor.

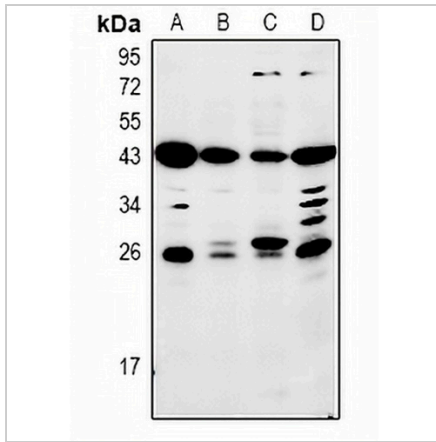
*Clone Number, Reactivity, Source/Host and Clonality can be found in the product name and Key Features section above.

DATASHEET

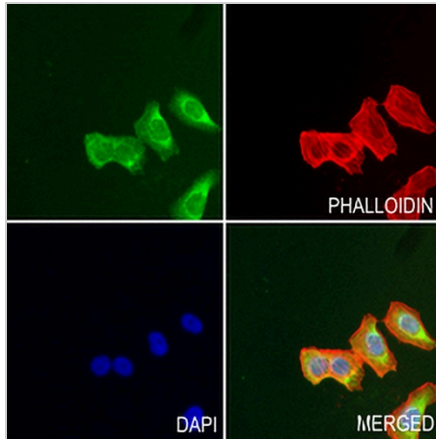
Mannose Binding Protein Rabbit Polyclonal Antibody

CAT. NO. APA10761

DATA



Western blot analysis of Mannose Binding Protein expression in HepG2 (A), AML12 (B), PC12 (C), LO2 (D) whole cell lysates. (Predicted band size: 26 kD; Observed band size: 26 kD)



Immunofluorescent analysis of Mannose Binding Protein staining in MCF7 cells. Formalin-fixed cells were permeabilized with 0.1% Triton X-100 in TBS for 5-10 minutes and blocked with 3% BSA-PBS for 30 minutes at room temperature. Cells were probed with the primary antibody in 3% BSA-PBS and incubated overnight at 4 °C in a hidified chamber. Cells were washed with PBST and incubated with a AREX® Fluor 488 - conjugated secondary antibody (green) in PBS at room temperature in the dark. Phalloidin - AREX® Fluor 594 was used to stain Actin filaments (red). DAPI was used to stain the cell nuclei (blue).

STORAGE

Store at 4°C short term. For long term storage, store at -20°C, avoiding freeze/thaw cycles.

NOTE

For Research Use Only. Not for diagnostic, therapeutics, prophylactic or in vivo use.