

DATASHEET

OCTN2 Rabbit Polyclonal Antibody

CAT. NO. APA10766

KEY FEATURES

Target	OCTN2	Source / Host	Rabbit
Reactivity	Human, Mouse, Rat	Clonality	Polyclonal
Applications	WB, IF/ICC	Conjugation	Unconjugated
Form / Buffer	Liquid in 0.42% Potassium phosphate, 0.87% Sodium chloride, pH 7.3, 30% glycerol, and 0.01% sodium azide.		Storage at-20°C

BACKGROUND

Sodium-ion dependent, high affinity carnitine transporter. Involved in the active cellular uptake of carnitine. Transports one sodium ion with one molecule of carnitine . Also transports organic cations such as tetraethylammonium (TEA) without the involvement of sodium. Relative uptake activity ratio of carnitine to TEA is 11.3 . In intestinal epithelia, transports the quorum-sensing pentapeptide CSF (competence and sporulation factor) from B.subtilis which induces cytoprotective heat shock proteins contributing to intestinal homeostasis . May also contribute to regulate the transport of organic compounds in testis across the blood-testis-barrier (Probable).

APPLICATION

To ensure optimal assay performance, AREX recommends conducting reagent titration tailored to each testing system for optimal detection results.

WB	1:500 - 1:1000
IF/ICC	1:50 - 1:200

*Results are sample-specific. Please refer to your local assay conditions and test parameters for reference.

PRODUCT OVERVIEW

Description	Rabbit polyclonal antibody to OCTN2
Specificity	Recognizes endogenous levels of OCTN2 protein.
Antibody Type	Primary antibody
Immunogen	KLH-conjugated synthetic peptide encompassing a sequence within the center region of human OCTN2. The exact sequence is proprietary.
Purification	The antibody was purified by immunogen affinity chromatography.
Molecular Weight	Predicted: 62 kD; Observed: 63 kD
Form/Buffer	Liquid in 0.42% Potassium phosphate, 0.87% Sodium chloride, pH 7.3, 30% glycerol, and 0.01% sodium azide.
Alternative Names	OCTN2; Solute carrier family 22 member 5; High-affinity sodium-dependent carnitine cotransporter; Organic cation/carnitine transporter 2
Gene Symbol	SLC22A5
Entrez Gene	6584(Human); 20520(Mouse); 29726(Rat)
SwissProt	O76082(Human); Q9Z0E8(Mouse); O70594(Rat)

*AREX continuously optimizes our products. Webpage content may not reflect the latest updates. For inquiries, please contact info@arexbio.com or your local distributor.

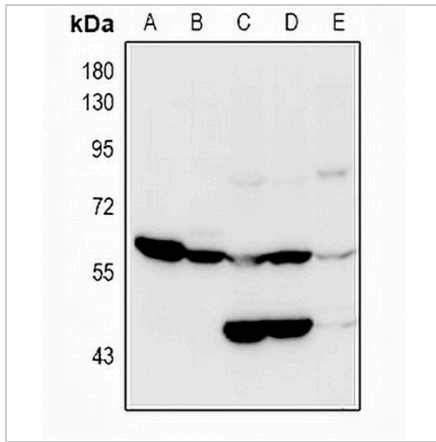
*Clone Number, Reactivity, Source/Host and Clonality can be found in the product name and Key Features section above.

DATASHEET

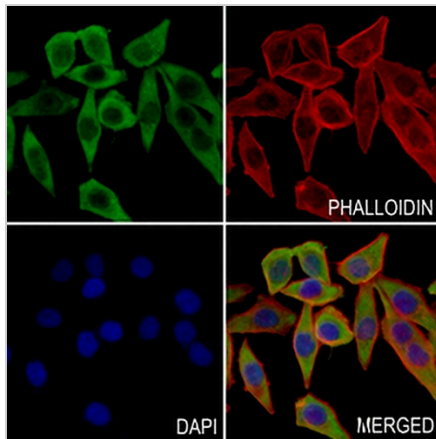
OCTN2 Rabbit Polyclonal Antibody

CAT. NO. APA10766

DATA



Western blot analysis of OCTN2 expression in mouse kidney (A), rat kidney (B), HEK293T (C), K562 (D), HeLa (E) whole cell lysates. (Predicted band size: 62 kD; Observed band size: 63 kD)



Immunofluorescent analysis of OCTN2 staining in MCF7 cells. Formalin-fixed cells were permeabilized with 0.1% Triton X-100 in TBS for 5-10 minutes and blocked with 3% BSA-PBS for 30 minutes at room temperature. Cells were probed with the primary antibody in 3% BSA-PBS and incubated overnight at 4 °C in a humidified chamber. Cells were washed with PBST and incubated with a AREX® Fluor 488 -conjugated secondary antibody (green) in PBS at room temperature in the dark. Phalloidin - AREX® Fluor 594 was used to stain Actin filaments (red). DAPI was used to stain the cell nuclei (blue).

STORAGE

Store at 4°C short term. For long term storage, store at -20°C, avoiding freeze/thaw cycles.

NOTE

For Research Use Only. Not for diagnostic, therapeutics, prophylactic or in vivo use.