

DATASHEET

KCNT1 Rabbit Polyclonal Antibody

CAT. NO. APA10773

KEY FEATURES

Target	KCNT1	Source / Host	Rabbit
Reactivity	Human, Mouse, Rat	Clonality	Polyclonal
Applications	WB, IHC	Conjugation	Unconjugated
Form / Buffer	Liquid in 0.42% Potassium phosphate, 0.87% Sodium chloride, pH 7.3, 30% glycerol, and 0.01% sodium azide.		Storage at -20°C

BACKGROUND

Sodium-activated K(+) channel channel . Acts as an important mediator of neuronal membrane excitability . Contributes to the delayed outward currents . Regulates neuronal bursting in sensory neurons . Contributes to synaptic development and plasticity .

APPLICATION

To ensure optimal assay performance, AREX recommends conducting reagent titration tailored to each testing system for optimal detection results.

WB	1:500 - 1:1000
IHC	1:50 - 1:100

*Results are sample-specific. Please refer to your local assay conditions and test parameters for reference.

PRODUCT OVERVIEW

Description	Rabbit polyclonal antibody to KCNT1
Specificity	Recognizes endogenous levels of KCNT1 protein.
Antibody Type	Primary antibody
Immunogen	KLH-conjugated synthetic peptide encompassing a sequence within the C-term region of human KCNT1. The exact sequence is proprietary.
Purification	The antibody was purified by immunogen affinity chromatography.
Molecular Weight	Predicted: 138 kD; Observed: 138; 142 kD
Form/Buffer	Liquid in 0.42% Potassium phosphate, 0.87% Sodium chloride, pH 7.3, 30% glycerol, and 0.01% sodium azide.
Alternative Names	KIAA1422; Potassium channel subfamily T member 1; KCa4.1
Gene Symbol	KCNT1
Entrez Gene	57582(Human); 227632(Mouse); 60444(Rat)
SwissProt	Q5JUK3(Human); Q6ZPR4(Mouse); Q9Z258(Rat)

*AREX continuously optimizes our products. Webpage content may not reflect the latest updates. For inquiries, please contact info@arexbio.com or your local distributor.

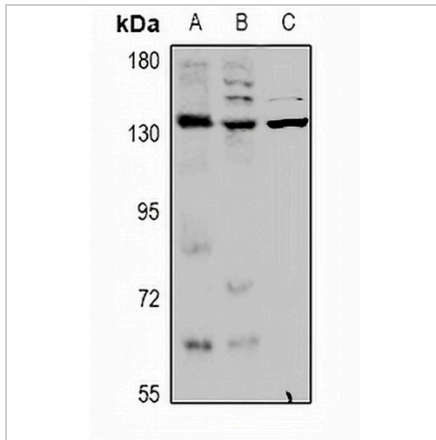
*Clone Number, Reactivity, Source/Host and Clonality can be found in the product name and Key Features section above.

DATASHEET

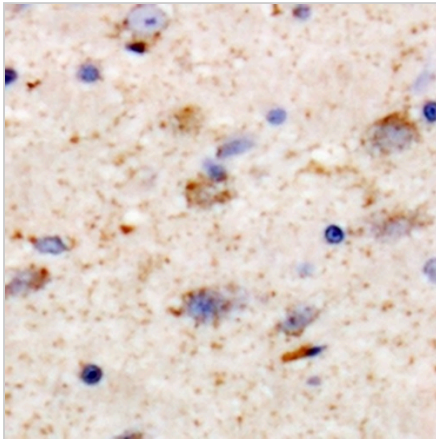
KCNT1 Rabbit Polyclonal Antibody

CAT. NO. APA10773

DATA



Western blot analysis of KCNT1 expression in HepG2 (A), AML12 (B), C6 (C) whole cell lysates. (Predicted band size: 138 kD; Observed band size: 138; 142 kD)



Immunohistochemical analysis of KCNT1 staining in human brain formalin fixed paraffin embedded tissue section. The section was pre-treated using heat mediated antigen retrieval with sodium citrate buffer (pH 6.0). The section was then incubated with the antibody at room temperature and detected using an HRP conjugated compact polymer system. DAB was used as the chromogen. The section was then counterstained with haematoxylin and mounted with DPX.

STORAGE

Store at 4°C short term. For long term storage, store at -20°C, avoiding freeze/thaw cycles.

NOTE

For Research Use Only. Not for diagnostic, therapeutics, prophylactic or in vivo use.